

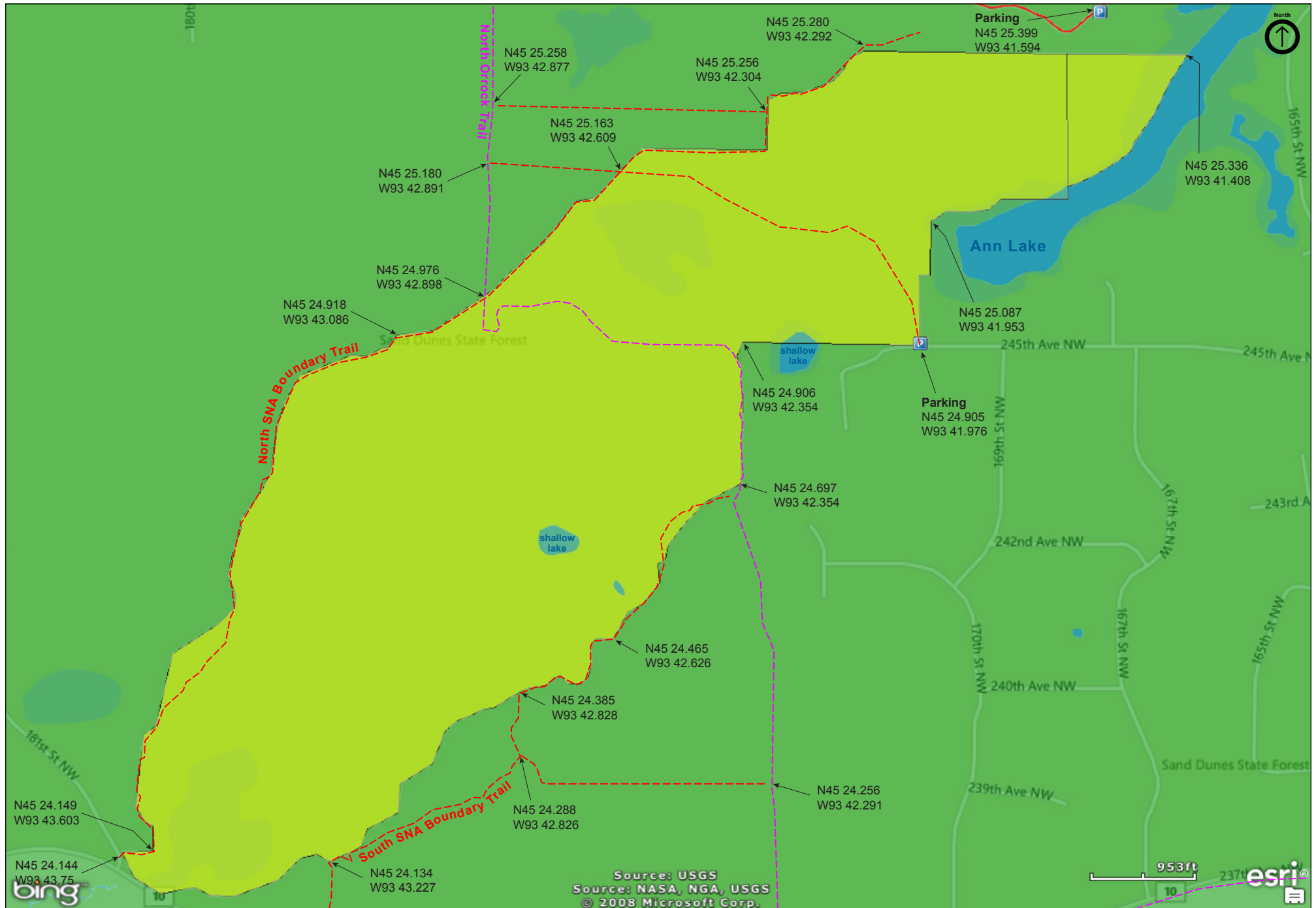
Uncas Dunes SNA Northwest Unit

Sherburne County



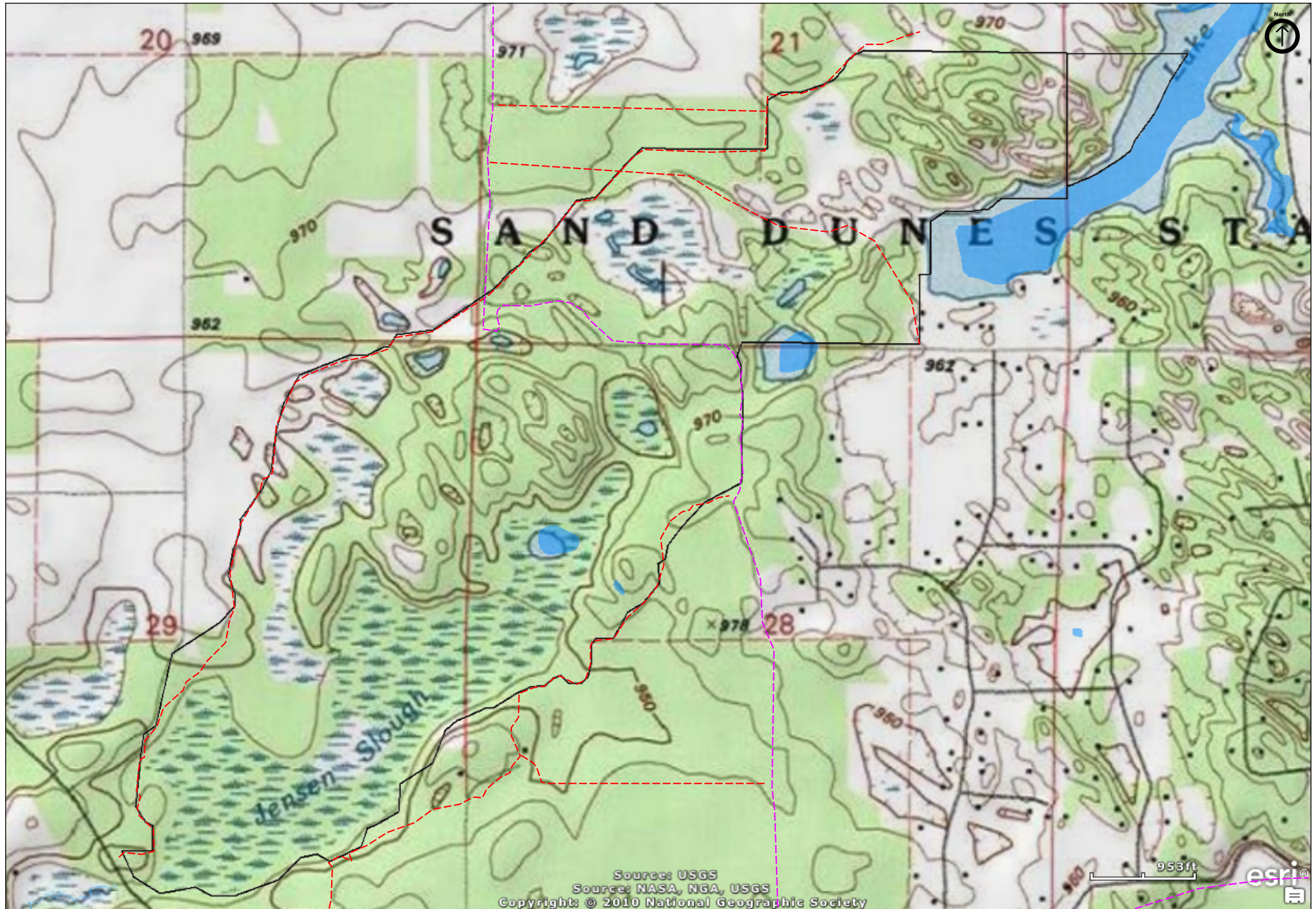
Uncas Dunes SNA Northwest Unit

Sherburne County



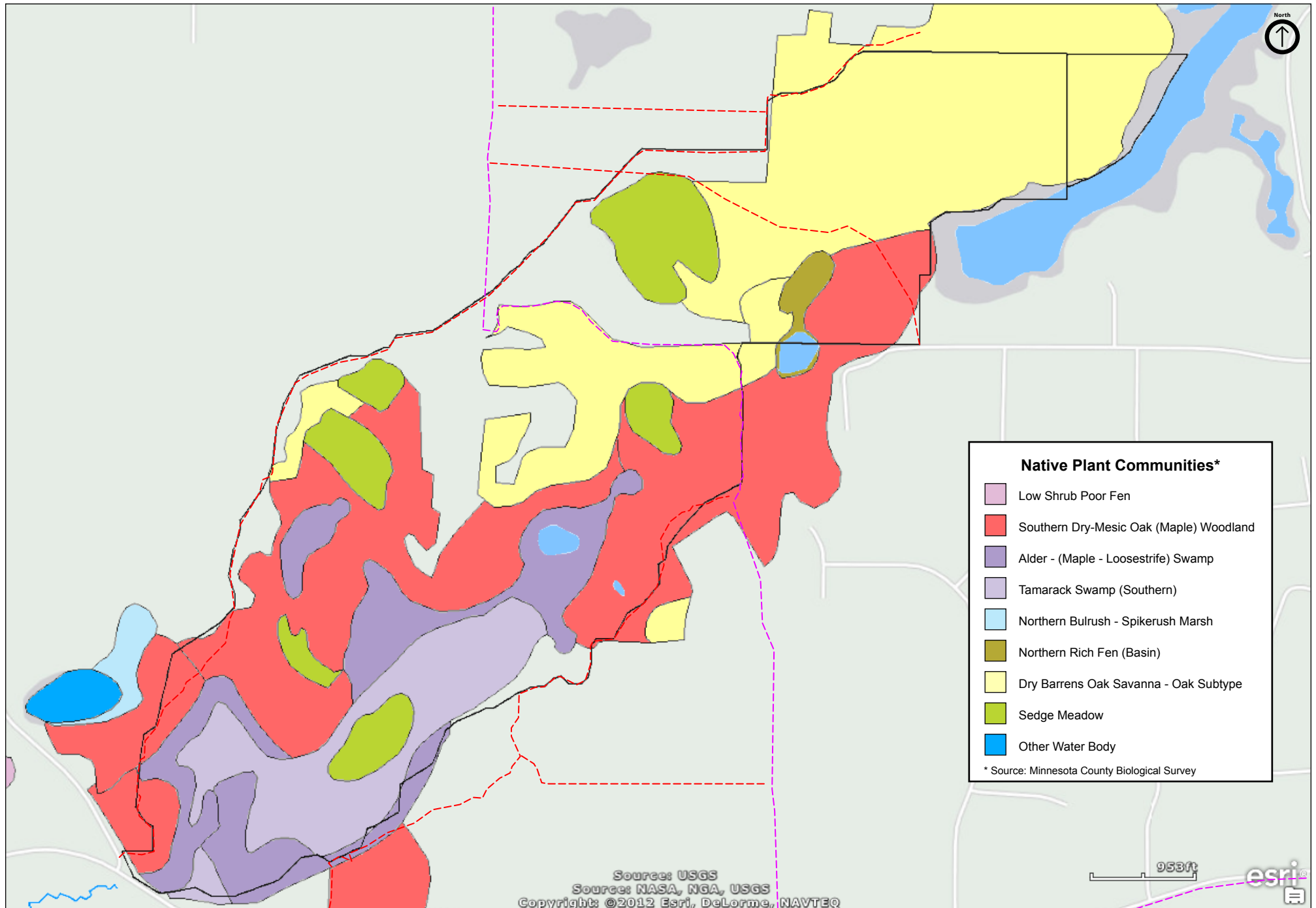
Uncas Dunes SNA Northwest Unit

Sherburne County



Uncas Dunes SNA Northwest Unit

Sherburne County



Uncas Dunes SNA

Northwest Unit

Directions and Notes from Minnesota DNR

1) From Zimmerman 5.4 miles W on Co Hwy 4, then 0.45 miles S on 168th St, then 1.25 miles W and S on forest road into Sand Dunes State Forest. Park in campground and hike S to site.

2) From Zimmerman 4.5 miles W on Co Hwy 4, then 2 miles S on Co Hwy 15 (164th St), then 0.8 mile W (pavement ends) on 245th Ave. Park in pull-off on N. Hike N and W into site.

Hiking trails adjacent to site. Recreational facilities available in Sand Dunes State Forest.

Notes from MinnesotaSeasons.com

Parking

Northwest Unit
(Ann Lake Campground and Day Use Area)
N45 25.399, W93 41.594

Northwest Unit
(245th Ave. NW – park on shoulder)
N45 24.905, W93 41.976

This SNA is in the Sand Dunes State Forest.

Getting There

To locate this SNA follow the directions on the Minnesota DNR Web page to get to the Ann Lake Campground and Day Use Area. Drive through the campground until you get to the parking area for the SNA just past campsite #28.

Hiking Trails

A hiking trail follows the northern boundary of the SNA. Another trail follows about half of the southern boundary. The North Orock Trail, a horse/hiking trail, passes through the SNA and connects the SNA boundary trails. All of the trails are former forest roads.

Deer Flies

Deer flies (*Chrysops* sp.) can be bothersome here in June and July. If you bring a mosquito headnet, do not leave it in the car. At some point you will want to use it.

Poison Ivy

This site is memorable for, among other things, an overabundance of poison ivy. Long pants are recommended, even for the trails.

DISCLAIMER OF WARRANTIES AND LIMITATIONS OF LIABILITY

MinnesotaSeasons.com, The Nature Conservancy, U.S. Department of Agriculture, Forest Service, U.S. Fish and Wildlife Service, the state of Minnesota, the Minnesota Department of Natural Resources, and their employees, make no representations or warranties, express or implied, with respect to the use of or reliance on the data provided herewith, regardless of its format or means of transmission. There are no guarantees or representations to the user as to the accuracy, currency, completeness, suitability or reliability of this data for any purpose. THE USER ACCEPTS THE DATA AND/OR SOFTWARE "AS IS" AND ASSUMES ALL RISKS ASSOCIATED WITH ITS USE.

IN NO EVENT SHALL MINNESOTASEASONS.COM, TNC, USDA-FS, USFWS, OR MNDNR BE LIABLE FOR ANY DIRECT, INDIRECT, INCIDENTAL, SPECIAL, EXEMPLARY, OR CONSEQUENTIAL DAMAGES (INCLUDING, BUT NOT LIMITED TO, PROCUREMENT OF SUBSTITUTE GOODS OR SERVICES; LOSS OF USE, DATA, OR PROFITS; OR BUSINESS INTERRUPTION) HOWEVER CAUSED AND ON ANY THEORY OF LIABILITY, WHETHER IN CONTRACT, STRICT LIABILITY, OR TORT (INCLUDING NEGLIGENCE OR OTHERWISE) ARISING IN ANY WAY OUT OF THE USE OF THIS DATA, EVEN IF ADVISED OF THE POSSIBILITY OF SUCH DAMAGE OR FOR ANY CLAIM BY ANY OTHER PARTY.

Your use of the data is acceptance on your part of the terms and conditions set forth herein.