

Uncas Dunes SNA
Southeast Unit

Sherburne County



Uncas Dunes SNA
Southeast Unit

Sherburne County



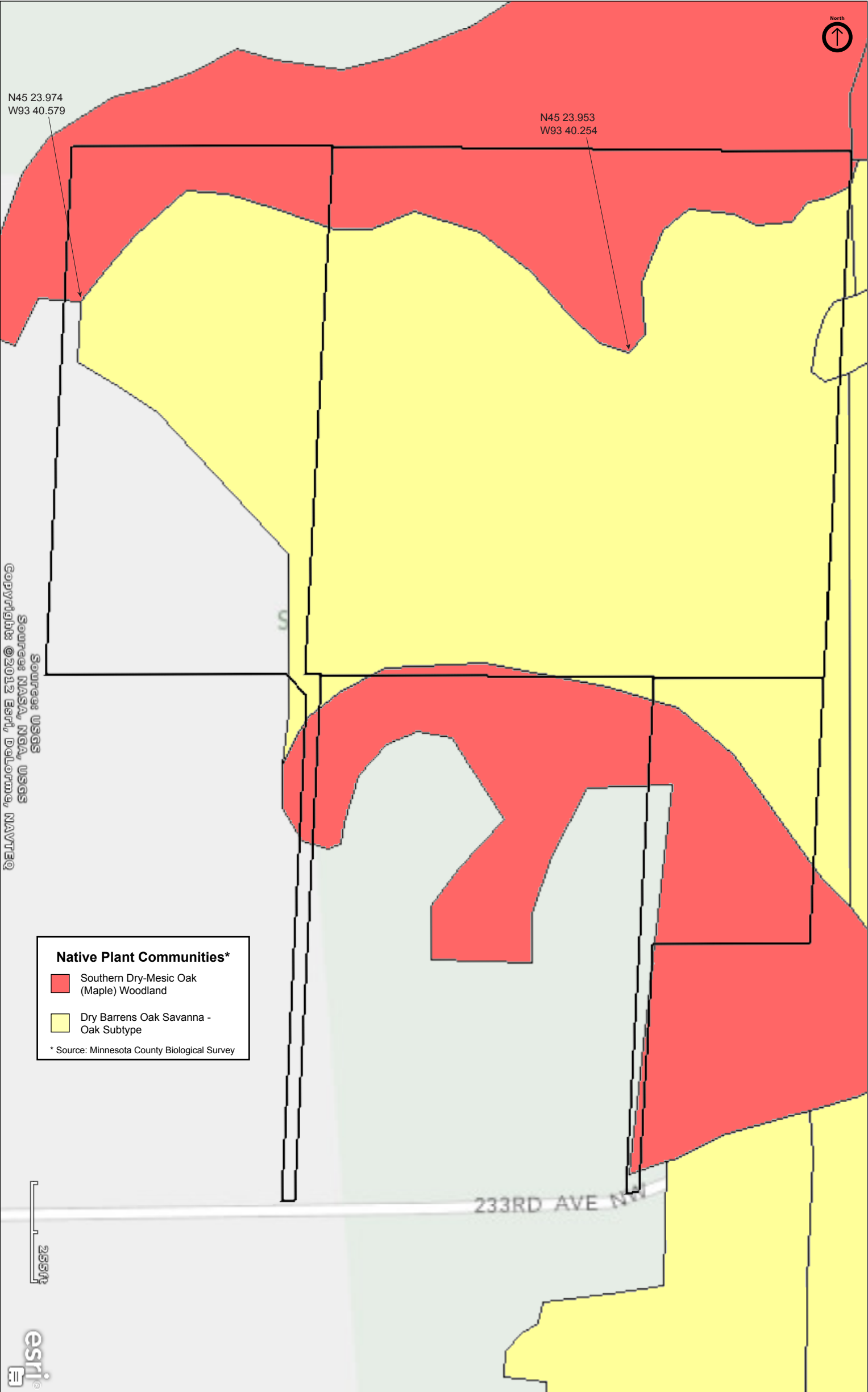
Uncas Dunes SNA
Southeast Unit

Sherburne County



Uncas Dunes SNA
Southeast Unit

Sherburne County



Uncas Dunes SNA

Southeast Unit

Directions and Notes from Minnesota DNR

From Zimmerman 4.5 miles W on Co Hwy 4, then 3.5 miles S on Co Hwy 15 (164th St), then 0.5 mile E on 233rd Ave. Park in pull-off on N and hike corridor N to site.

Hiking trails adjacent to site. Recreational facilities available in Sand Dunes State Forest.

Active management, in cooperation with Sand Dunes State Forest, includes prescribed burning and removal of planted pine trees to assist in restoration and enhancement of the sand prairie.

Notes from MinnesotaSeasons.com

Parking

Southeast Unit (233rd Ave.)
N45 23.599, W93 40.457

Hiking Trails

A hiking trail follows the northern boundary of the SNA. Another trail follows about half of the southern boundary. The North Orock Trail, a horse/hiking trail, passes through the SNA and connects the SNA boundary trails. All of the trails are former forest roads.

Deer Flies

If you bring a mosquito head net, do not leave it in the car. At some point you will want to use it.

Poison Ivy

This site is memorable for, among other things, an overabundance of poison ivy. Long pants are recommended, even for the trails.

This SNA is within the boundaries of Sand Dunes State Forest.

DISCLAIMER OF WARRANTIES AND LIMITATIONS OF LIABILITY

MinnesotaSeasons.com, The Nature Conservancy, U.S. Department of Agriculture, Forest Service, U.S. Fish and Wildlife Service, the state of Minnesota, the Minnesota Department of Natural Resources, and their employees, make no representations or warranties, express or implied, with respect to the use of or reliance on the data provided herewith, regardless of its format or means of transmission. There are no guarantees or representations to the user as to the accuracy, currency, completeness, suitability or reliability of this data for any purpose. THE USER ACCEPTS THE DATA AND/OR SOFTWARE "AS IS" AND ASSUMES ALL RISKS ASSOCIATED WITH ITS USE.

IN NO EVENT SHALL MINNESOTASEASONS.COM, TNC, USDA-FS, USFWS, OR MNDNR BE LIABLE FOR ANY DIRECT, INDIRECT, INCIDENTAL, SPECIAL, EXEMPLARY, OR CONSEQUENTIAL DAMAGES (INCLUDING, BUT NOT LIMITED TO, PROCUREMENT OF SUBSTITUTE GOODS OR SERVICES; LOSS OF USE, DATA, OR PROFITS; OR BUSINESS INTERRUPTION) HOWEVER CAUSED AND ON ANY THEORY OF LIABILITY, WHETHER IN CONTRACT, STRICT LIABILITY, OR TORT (INCLUDING NEGLIGENCE OR OTHERS) ARISING IN ANY WAY OUT OF THE USE OF THIS DATA, EVEN IF ADVISED OF THE POSSIBILITY OF SUCH DAMAGE OR FOR ANY CLAIM BY ANY OTHER PARTY.

Your use of the data is acceptance on your part of the terms and conditions set forth herein.