

Wahpeton Prairie WMA

Redwood County



Wahpeton Prairie WMA

Redwood County

Legend

P

parking

wood routed sign



Duncan Ave

Cottonwood River



N44 18.289
W95 27.058

Esri, HERE, Garmin, GeoTechnologies, Inc., NGA, USGS

N44 18.506
W95 26.452

N44 18.357
W95 26.450

N44 18.287
W95 26.449

Wahpeton Prairie WMA

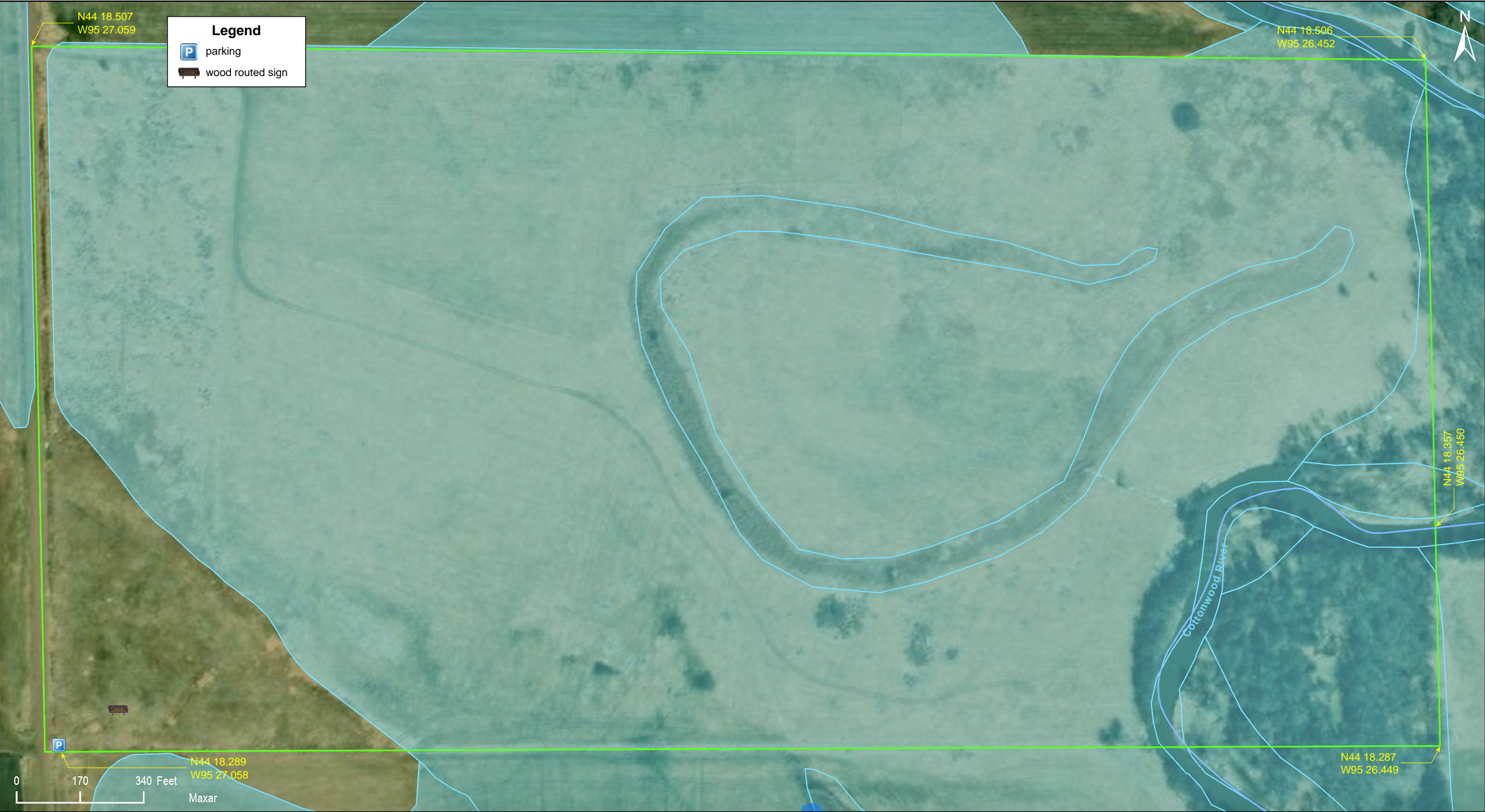
Redwood County



Wahpeton Prairie WMA

Redwood County







Wahpeton Prairie WMA

Directions and Notes from Minnesota DNR

From Walnut Grove, go 4.5 miles N on CSAH 5, then 1 mile E on 170th St, then 1/2 m N on Duncan Av

Notes from MinnesotaSeasons.com

Parking

N44 18.289, W95 27.058

Wet Prairie

Most of this site is wet prairie. Much of it may be flooded in the spring. Waterproof footwear is recommended.

DISCLAIMER OF WARRANTIES AND LIMITATIONS OF LIABILITY

MinnesotaSeasons.com, The Nature Conservancy, U.S. Department of Agriculture, Forest Service, U.S. Fish and Wildlife Service, the state of Minnesota, the Minnesota Department of Natural Resources, and their employees, make no representations or warranties, express or implied, with respect to the use of or reliance on the data provided herewith, regardless of its format or means of transmission. There are no guarantees or representations to the user as to the accuracy, currency, completeness, suitability or reliability of this data for any purpose. THE USER ACCEPTS THE DATA AND/OR SOFTWARE "AS IS" AND ASSUMES ALL RISKS ASSOCIATED WITH ITS USE.

IN NO EVENT SHALL MINNESOTASEASONS.COM, TNC, USDA-FS, USFWS, OR MNDNR BE LIABLE FOR ANY DIRECT, INDIRECT, INCIDENTAL, SPECIAL, EXEMPLARY, OR CONSEQUENTIAL DAMAGES (INCLUDING, BUT NOT LIMITED TO, PROCUREMENT OF SUBSTITUTE GOODS OR SERVICES; LOSS OF USE, DATA, OR PROFITS; OR BUSINESS INTERRUPTION) HOWEVER CAUSED AND ON ANY THEORY OF LIABILITY, WHETHER IN CONTRACT, STRICT LIABILITY, OR TORT (INCLUDING NEGLIGENCE OR OTHERS) ARISING IN ANY WAY OUT OF THE USE OF THIS DATA, EVEN IF ADVISED OF THE POSSIBILITY OF SUCH DAMAGE OR FOR ANY CLAIM BY ANY OTHER PARTY.

Your use of the data is acceptance on your part of the terms and conditions set forth herein.