

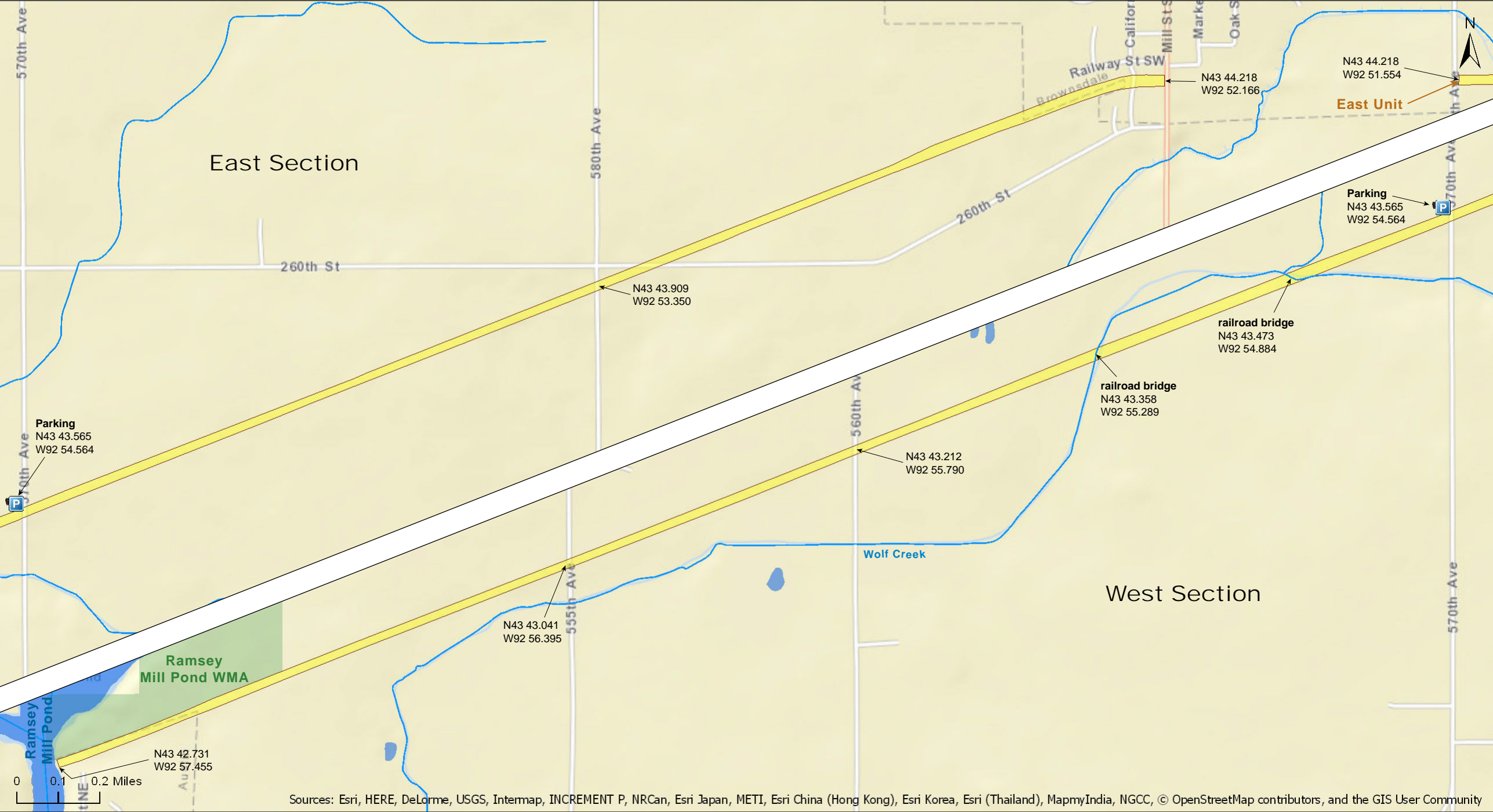
Wild Indigo Prairie SNA
West Unit

Mower County



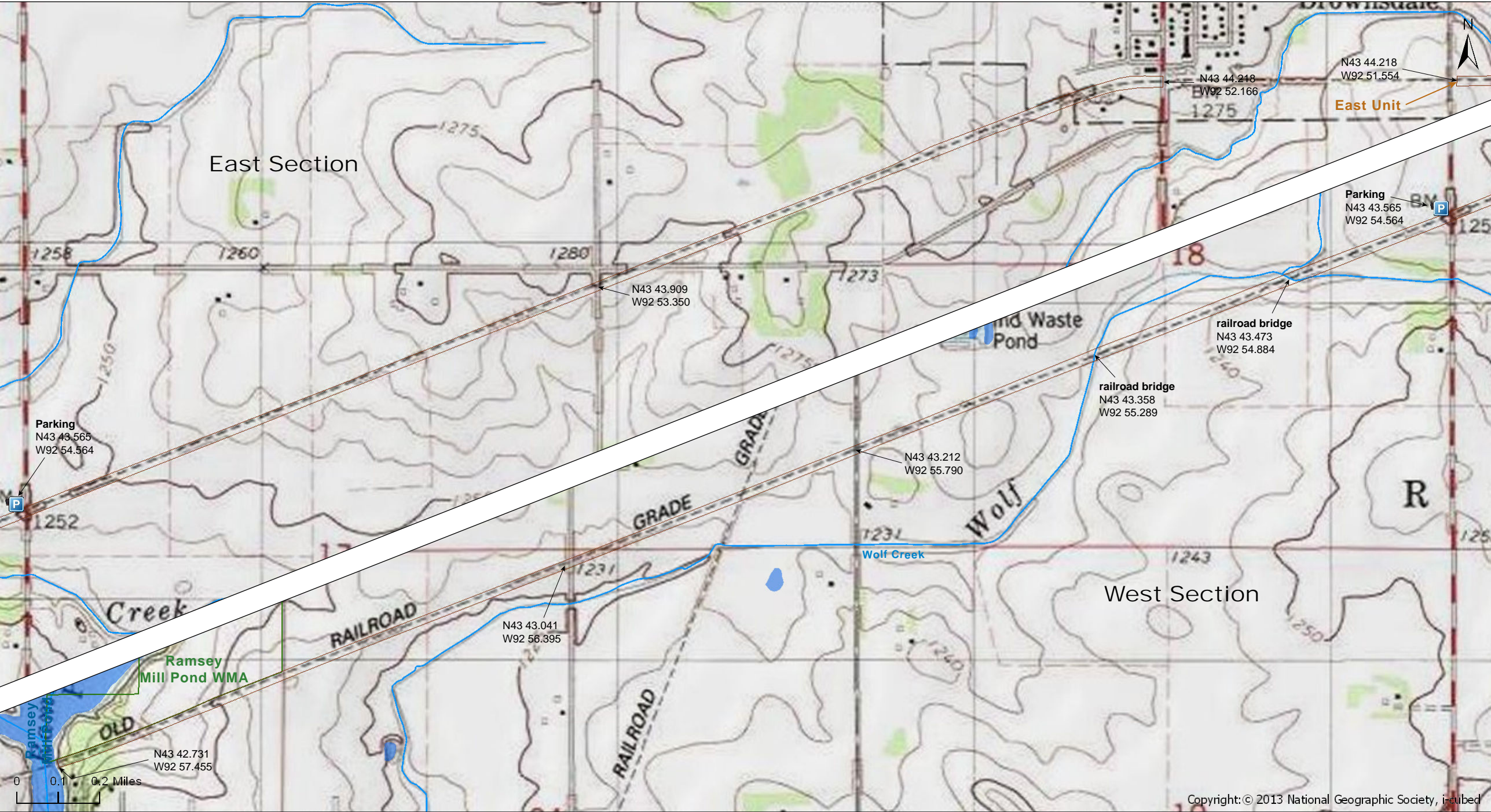
Wild Indigo Prairie SNA
West Unit

Mower County



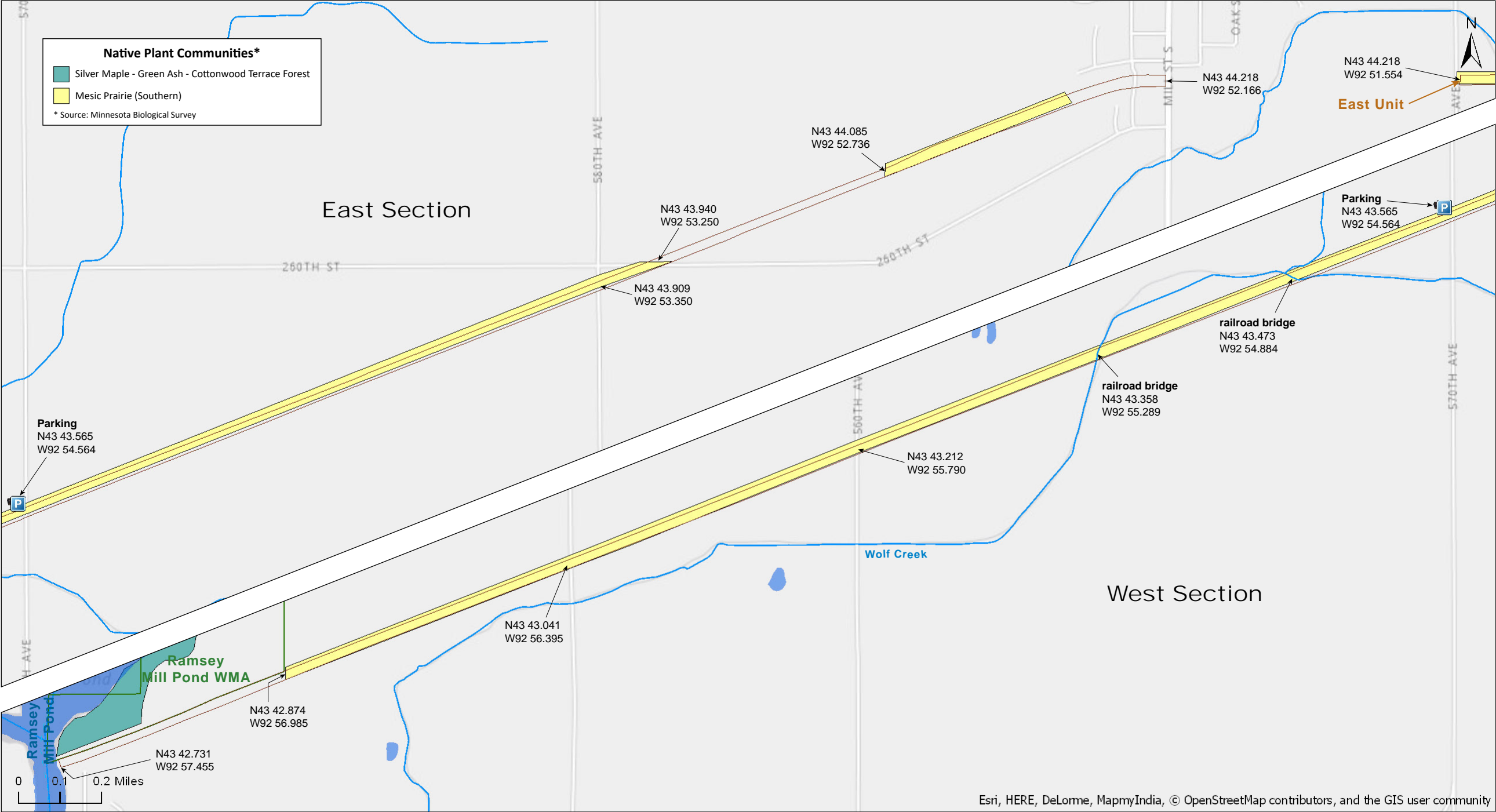
Wild Indigo Prairie SNA
West Unit

Mower County

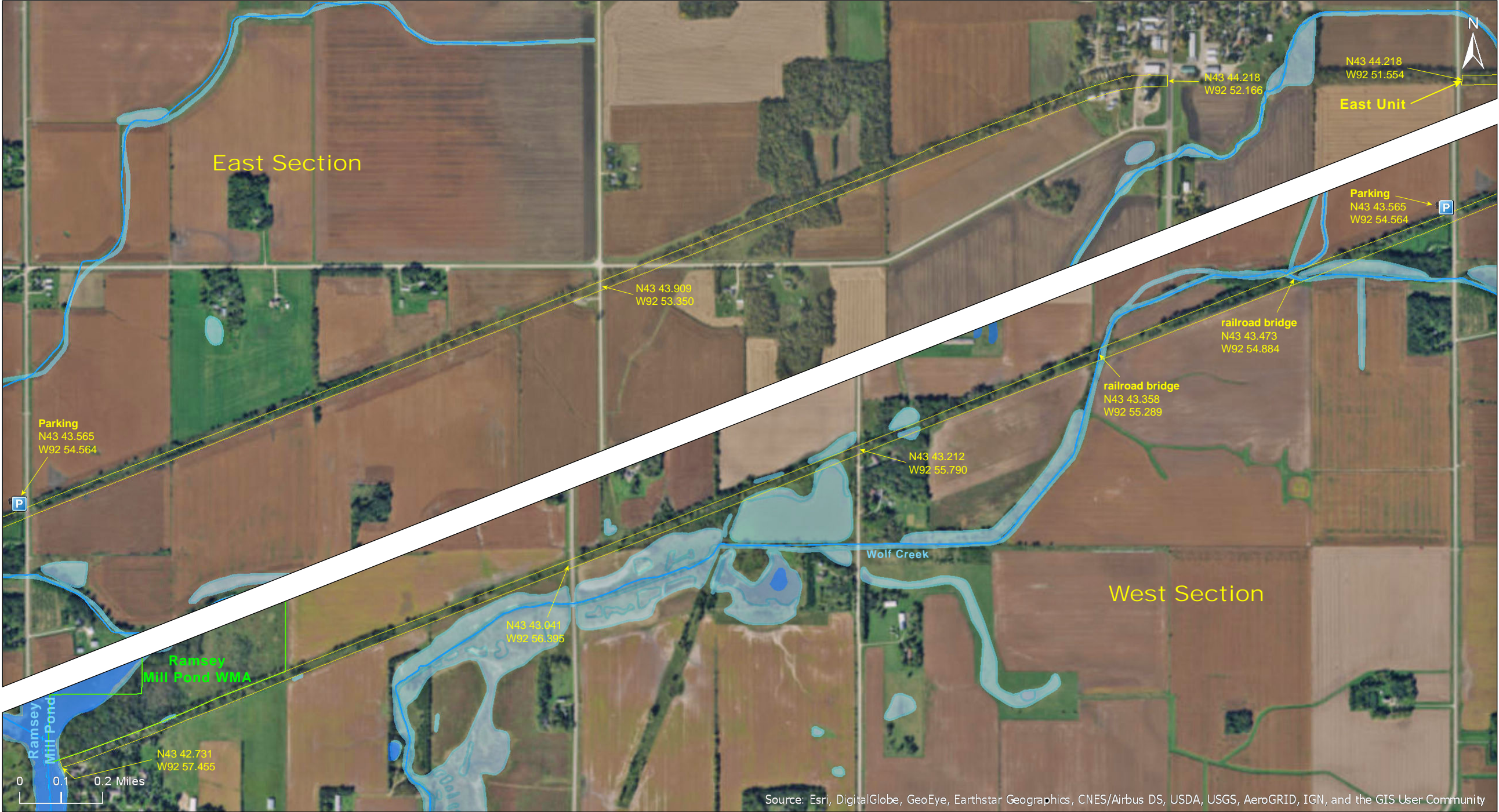


Wild Indigo Prairie SNA
West Unit

Mower County



Wild Indigo Prairie SNA
West Unit



Wild Indigo Prairie SNA West Unit

Map Center

Directions and Notes from Minnesota DNR

West

Directions: From Brownsdale 2.25 miles W on Co Hwy 2, then 1.4 miles S on Co Hwy 16 (570th Ave). Park in lot on W.

Lat/Lon: 43.726077, -92.909405

Center

Directions: From Brownsdale 2 miles E on Co Hwy 2, then 0.35 mile S on Co Hwy 19 (610th Ave). Park in lot on W.

Lat/Lon: 43.734381, -92.829389

East

Directions: In Dexter 0.25 mile W from corner of Main St (Co Hwy 7) and Front St. Park in lot on S as road turns N.

Lat/Lon: 43.720906, -92.709463

A primitive hiking trail follows the former railroad grade though site. Ramsey Mill Pond WMA is adjacent to this site.

Notes from MinnesotaSeasons.com

Parking

East (Front Street)
N43 43.254, W92 42.568

Center (610th Ave.)
N43 44.063, W92 49.763

West (570th Ave.)
N43 43.565, W92 54.564

DISCLAIMER OF WARRANTIES AND LIMITATIONS OF LIABILITY

MinnesotaSeasons.com, The Nature Conservancy, U.S. Department of Agriculture, Forest Service, U.S. Fish and Wildlife Service, the state of Minnesota, the Minnesota Department of Natural Resources, and their employees, make no representations or warranties, express or implied, with respect to the use of or reliance on the data provided herewith, regardless of its format or means of transmission. There are no guarantees or representations to the user as to the accuracy, currency, completeness, suitability or reliability of this data for any purpose. THE USER ACCEPTS THE DATA AND/OR SOFTWARE "AS IS" AND ASSUMES ALL RISKS ASSOCIATED WITH ITS USE.

IN NO EVENT SHALL MINNESOTASEASONS.COM, TNC, USDA-FS, USFWS, OR MNDNR BE LIABLE FOR ANY DIRECT, INDIRECT, INCIDENTAL, SPECIAL, EXEMPLARY, OR CONSEQUENTIAL DAMAGES (INCLUDING, BUT NOT LIMITED TO, PROCUREMENT OF SUBSTITUTE GOODS OR SERVICES; LOSS OF USE, DATA, OR PROFITS; OR BUSINESS INTERRUPTION) HOWEVER CAUSED AND ON ANY THEORY OF LIABILITY, WHETHER IN CONTRACT, STRICT LIABILITY, OR TORT (INCLUDING NEGLIGENCE OR OTHERS) ARISING IN ANY WAY OUT OF THE USE OF THIS DATA, EVEN IF ADVISED OF THE POSSIBILITY OF SUCH DAMAGE OR FOR ANY CLAIM BY ANY OTHER PARTY.

Your use of the data is acceptance on your part of the terms and conditions set forth herein.