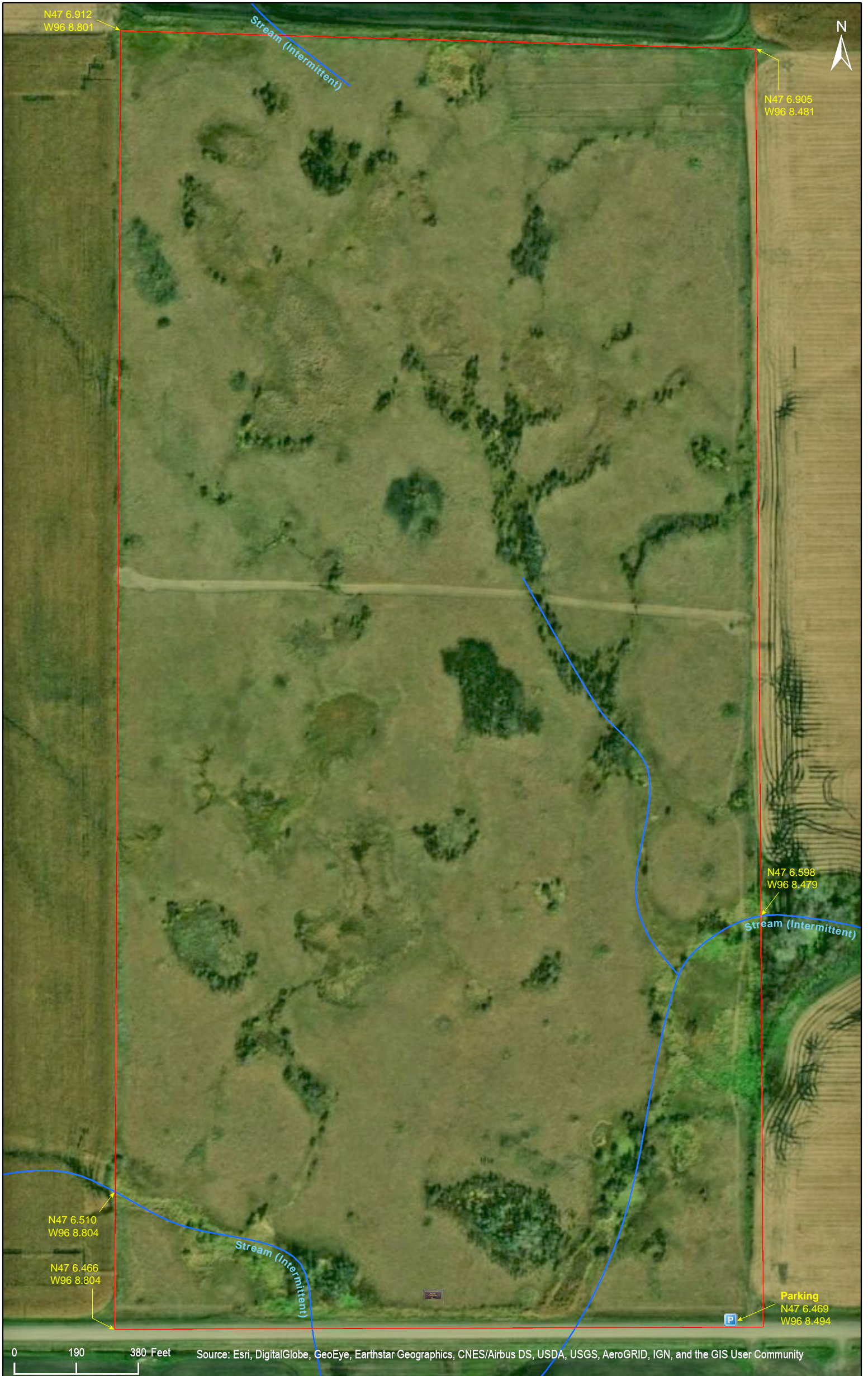


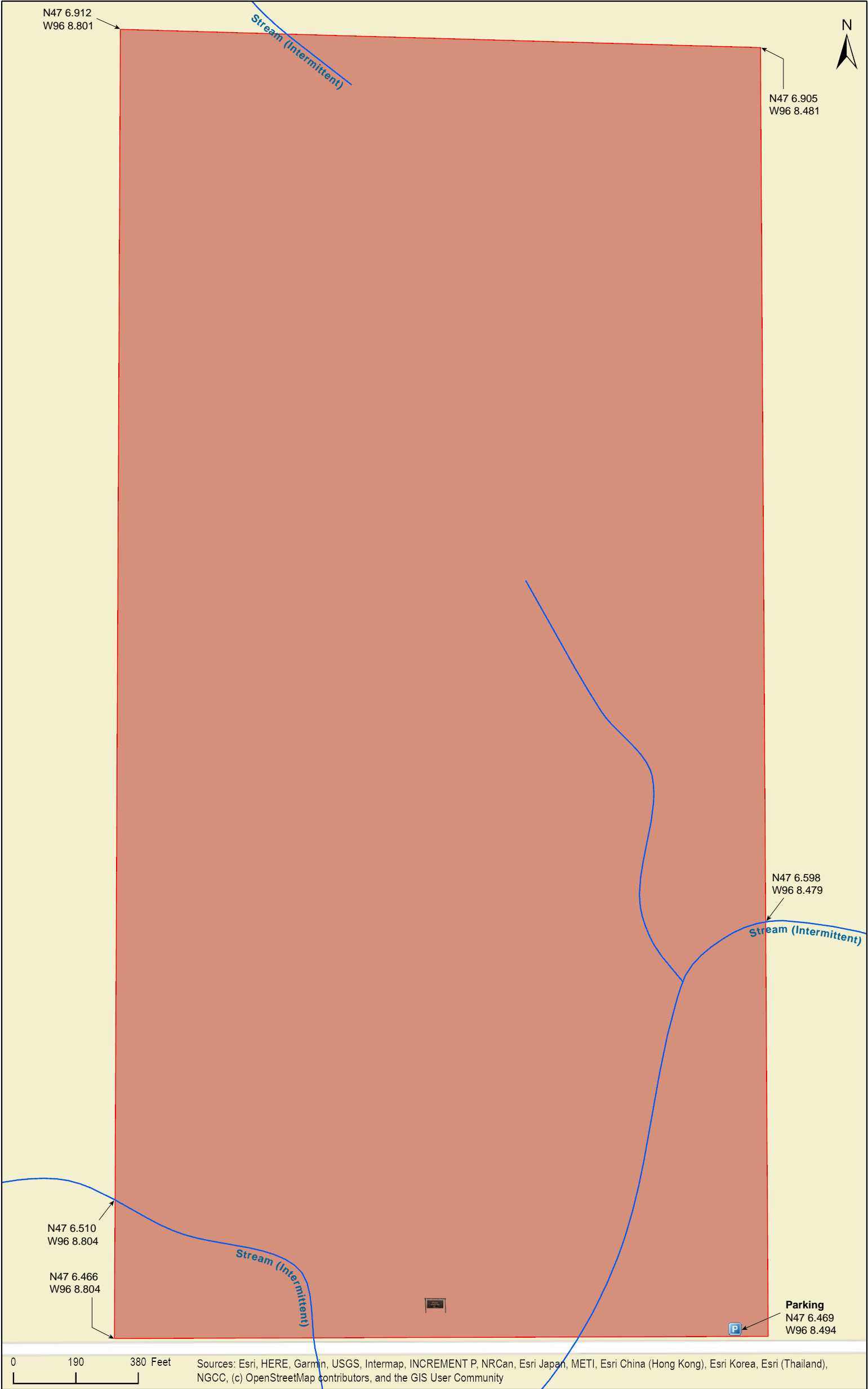
Zimmerman Prairie

Becker County



Zimmerman Prairie

Becker County



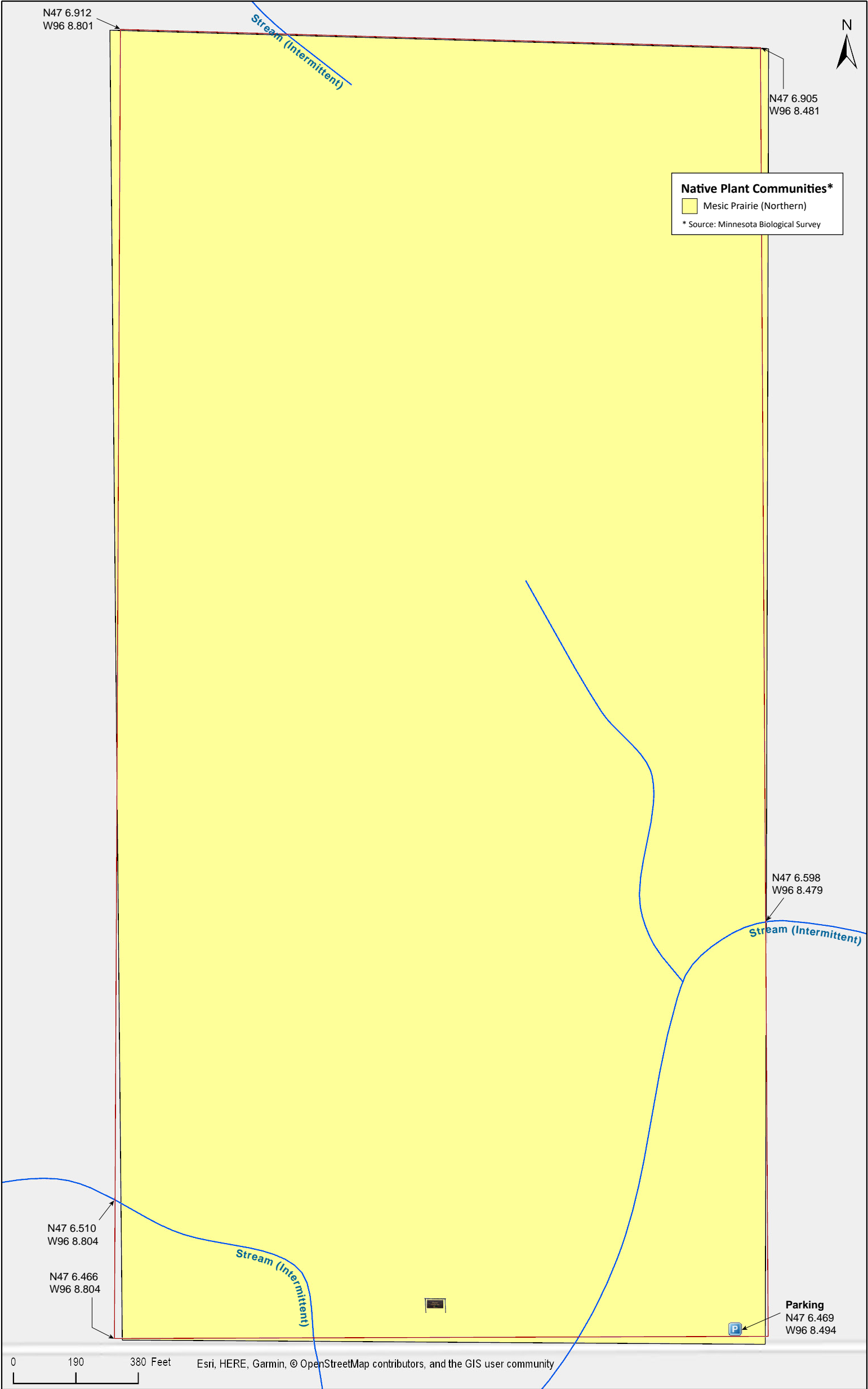
Zimmerman Prairie

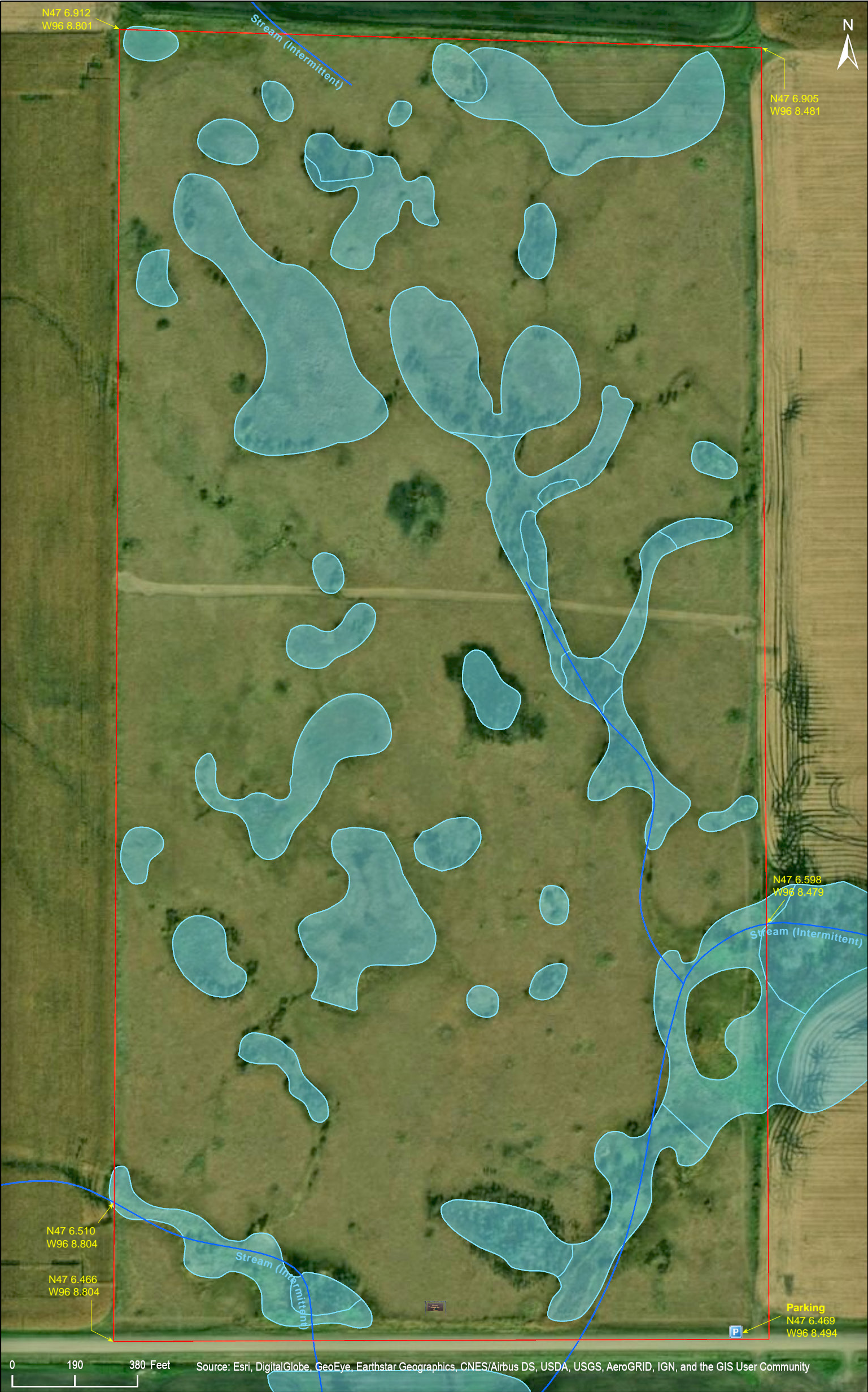
Becker County



Zimmerman Prairie

Becker County





Zimmerman Prairie

Directions and Notes from The Nature Conservancy

Location

Northwestern Minnesota, Becker County

From the town of Ulen, go east on County Road 34 for about 5.5 miles. County Road 34 undergoes a number change when it enters Becker County, becoming County Road 16. After 5.5 miles turn left (north) onto County Road 7 and head north for two miles. Turn left (west) onto County Road 18 for one-half mile to reach the southeast corner of the preserve, located to the north of the road. Park along the side of the road opposite the small landing strip.

Notes from MinnesotaSeasons.com

Parking

Park on the north shoulder of County Road 18. There is a field access at the southeast corner of the preserve, but this is on private property. Do not block the field access.

N47 6.469, W96 8.494

DISCLAIMER OF WARRANTIES AND LIMITATIONS OF LIABILITY

MinnesotaSeasons.com, The Nature Conservancy, U.S. Department of Agriculture, Forest Service, U.S. Fish and Wildlife Service, the state of Minnesota, the Minnesota Department of Natural Resources, and their employees, make no representations or warranties, express or implied, with respect to the use of or reliance on the data provided herewith, regardless of its format or means of transmission. There are no guarantees or representations to the user as to the accuracy, currency, completeness, suitability or reliability of this data for any purpose. THE USER ACCEPTS THE DATA AND/OR SOFTWARE "AS IS" AND ASSUMES ALL RISKS ASSOCIATED WITH ITS USE.

IN NO EVENT SHALL MINNESOTASEASONS.COM, TNC, USDA-FS, USFWS, OR MNDNR BE LIABLE FOR ANY DIRECT, INDIRECT, INCIDENTAL, SPECIAL, EXEMPLARY, OR CONSEQUENTIAL DAMAGES (INCLUDING, BUT NOT LIMITED TO, PROCUREMENT OF SUBSTITUTE GOODS OR SERVICES; LOSS OF USE, DATA, OR PROFITS; OR BUSINESS INTERRUPTION) HOWEVER CAUSED AND ON ANY THEORY OF LIABILITY, WHETHER IN CONTRACT, STRICT LIABILITY, OR TORT (INCLUDING NEGLIGENCE OR OTHERS) ARISING IN ANY WAY OUT OF THE USE OF THIS DATA, EVEN IF ADVISED OF THE POSSIBILITY OF SUCH DAMAGE OR FOR ANY CLAIM BY ANY OTHER PARTY.

Your use of the data is acceptance on your part of the terms and conditions set forth herein.