

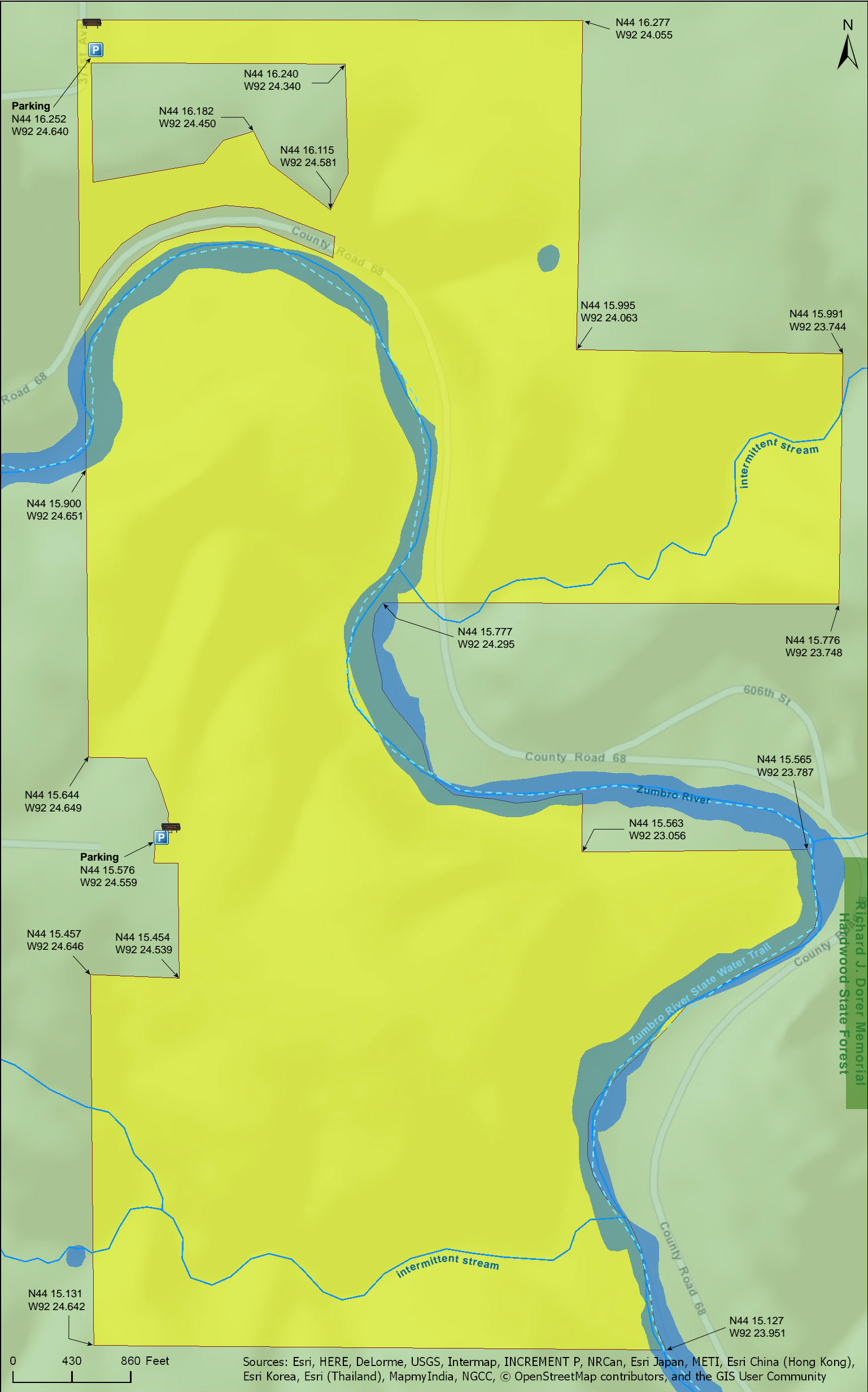
Zumbro Falls Woods SNA

Wabasha County



Zumbro Falls Woods SNA

Wabasha County



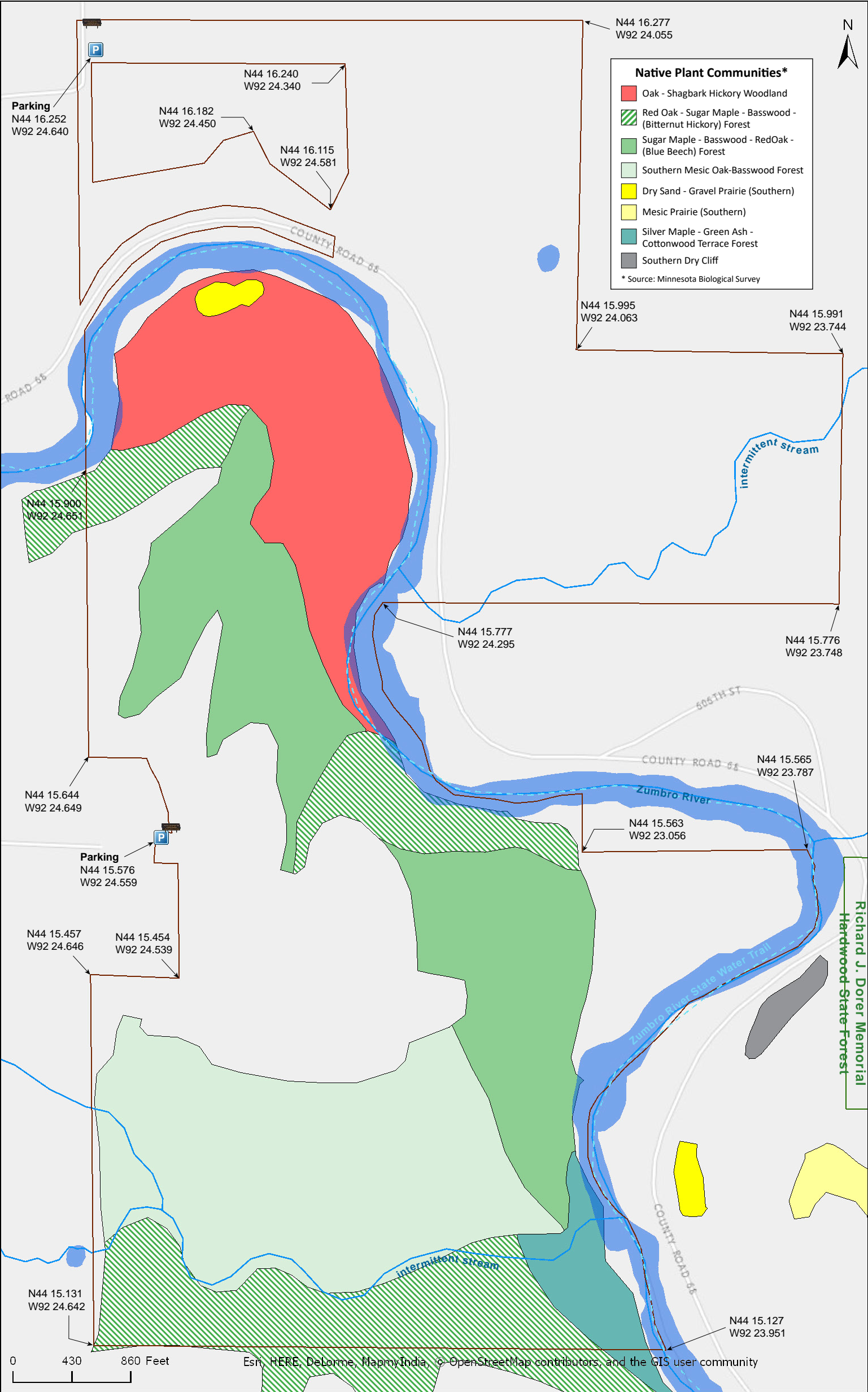
Zumbro Falls Woods SNA

Wabasha County



Zumbro Falls Woods SNA

Wabasha County





Zumbro Falls Woods SNA

Directions and Notes from Minnesota DNR

North Unit

Directions: From Zumbro Falls 0.5 mile E on MN Hwy 60, then 1 mile S on 371st Ave. Park in lot on E. Hike corridor 0.35 mile E and S into woods of site.

Lat/Lon: 44.270871, -92.410664

South Unit

Directions: From Zumbro Falls 1.75 miles S on US Hwy 63, then 1 mile E on 605th St to dead end. Continue through farm yard. Park in lot E of home and hike E into site.

Lat/Lon: 44.259592, -92.409352

This site has no maintained trails or other recreational facilities. The Zumbro River Water Trail passes through this site.

Notes from MinnesotaSeasons.com

Parking

North Unit

371st Ave./Township Road 126
N44 16.252, W92 24.640

South Unit

605th St.
N44 15.576, W92 24.559

DISCLAIMER OF WARRANTIES AND LIMITATIONS OF LIABILITY

MinnesotaSeasons.com, The Nature Conservancy, U.S. Department of Agriculture, Forest Service, U.S. Fish and Wildlife Service, the state of Minnesota, the Minnesota Department of Natural Resources, and their employees, make no representations or warranties, express or implied, with respect to the use of or reliance on the data provided herewith, regardless of its format or means of transmission. There are no guarantees or representations to the user as to the accuracy, currency, completeness, suitability or reliability of this data for any purpose. THE USER ACCEPTS THE DATA AND/OR SOFTWARE "AS IS" AND ASSUMES ALL RISKS ASSOCIATED WITH ITS USE.

IN NO EVENT SHALL MINNESOTASEASONS.COM, TNC, USDA-FS, USFWS, OR MNDNR BE LIABLE FOR ANY DIRECT, INDIRECT, INCIDENTAL, SPECIAL, EXEMPLARY, OR CONSEQUENTIAL DAMAGES (INCLUDING, BUT NOT LIMITED TO, PROCUREMENT OF SUBSTITUTE GOODS OR SERVICES; LOSS OF USE, DATA, OR PROFITS; OR BUSINESS INTERRUPTION) HOWEVER CAUSED AND ON ANY THEORY OF LIABILITY, WHETHER IN CONTRACT, STRICT LIABILITY, OR TORT (INCLUDING NEGLIGENCE OR OTHERS) ARISING IN ANY WAY OUT OF THE USE OF THIS DATA, EVEN IF ADVISED OF THE POSSIBILITY OF SUCH DAMAGE OR FOR ANY CLAIM BY ANY OTHER PARTY.

Your use of the data is acceptance on your part of the terms and conditions set forth herein.