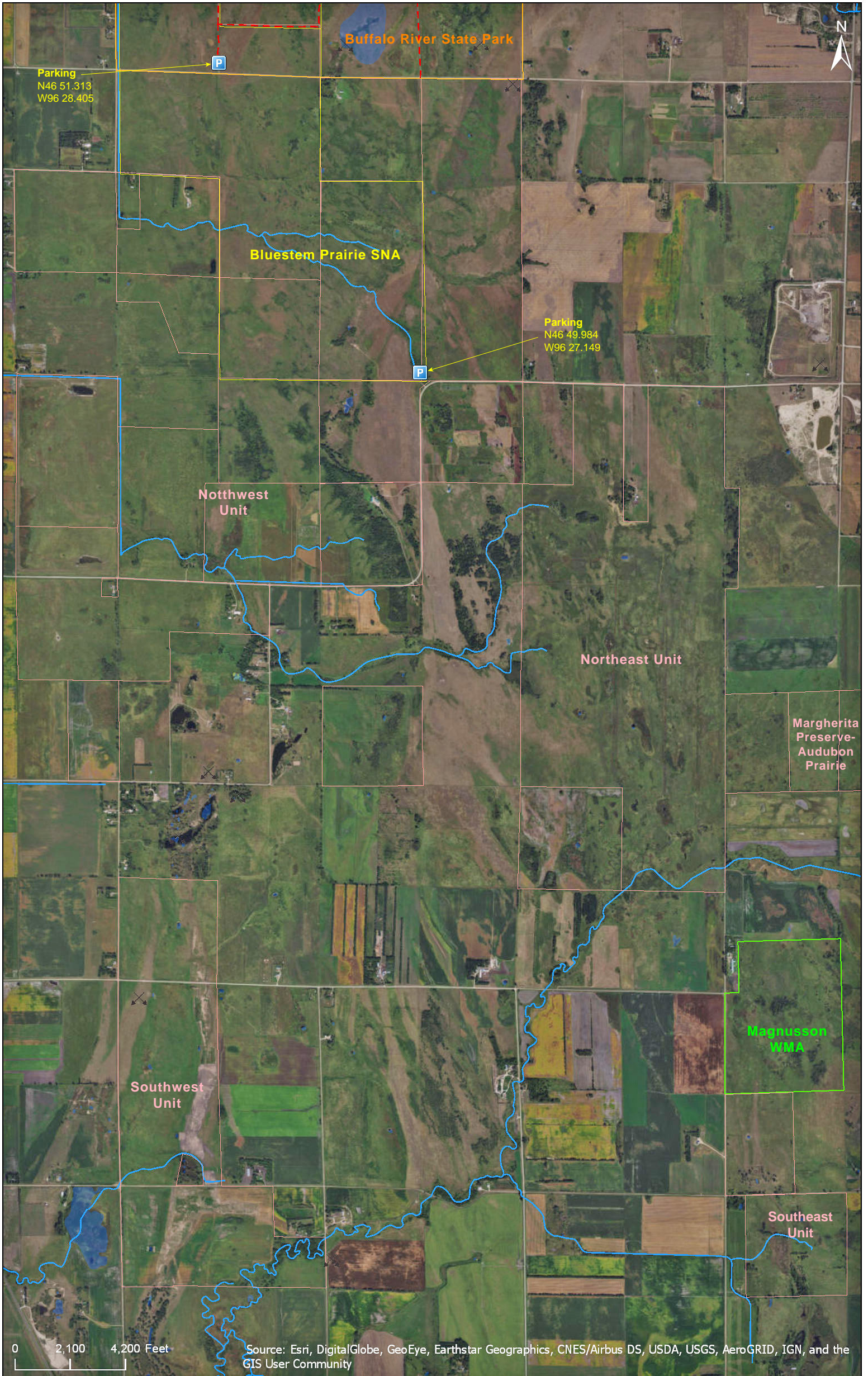


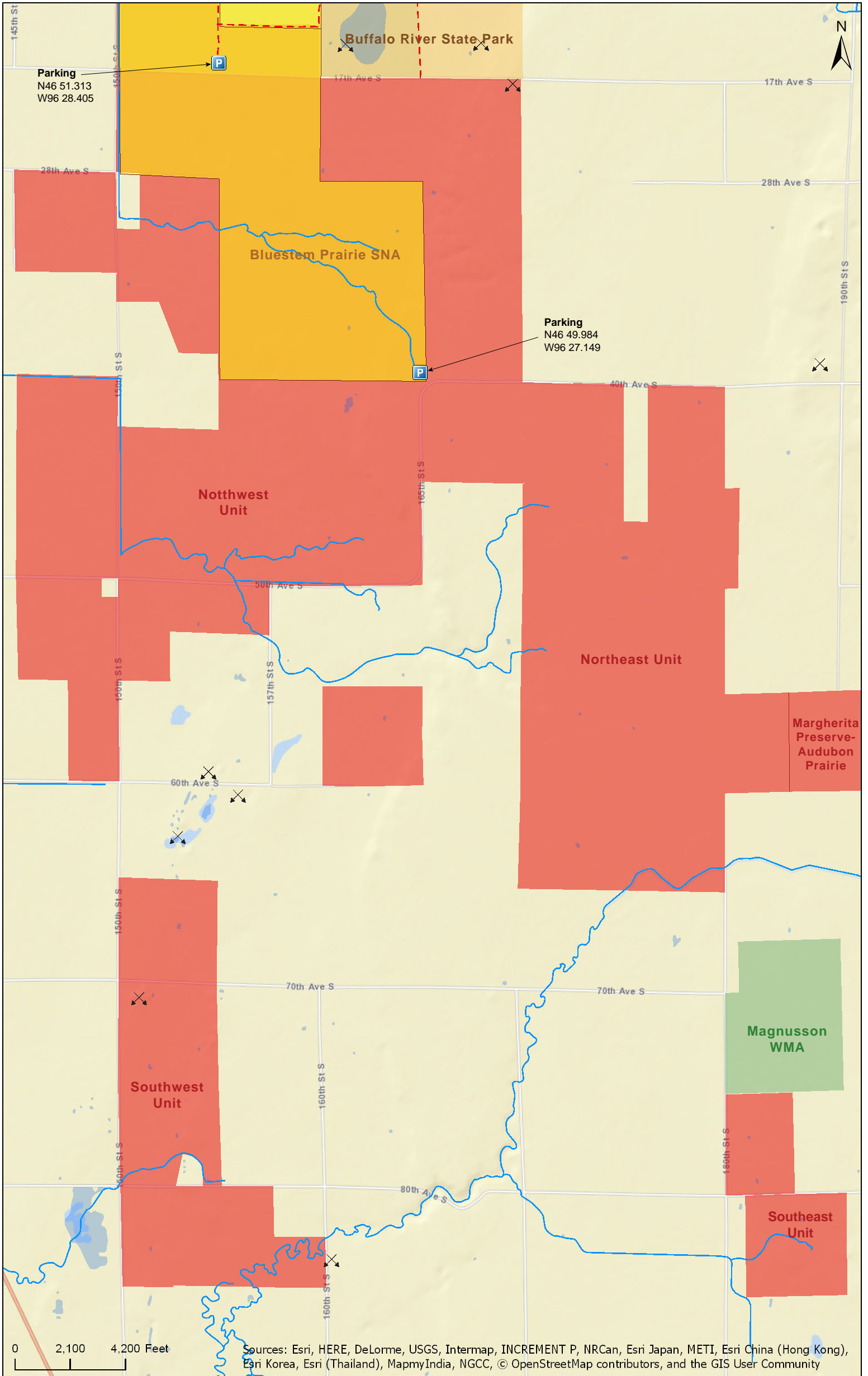
Bluestem Prairie

Clay County



Bluestem Prairie

Clay County



Sources: Esri, HERE, DeLorme, USGS, Intermap, INCREMENT P, NRCan, Esri Japan, METI, Esri China (Hong Kong), Esri Korea, Esri (Thailand), MapmyIndia, NGCC, © OpenStreetMap contributors, and the GIS User Community

Bluestem Prairie

Directions and Notes from The Nature Conservancy

From Moorhead, drive east about 14 miles on U.S. Highway 10 to the intersection with MN Highway 9. Turn south and travel for 1.5 miles and then turn east on 17th Avenue South and continue for 1.5 miles and park in the lot on the north side of the road. To reach another parking area on the southeastern edge of the preserve, continue south on Highway 9 to Clay County Highway 12. Turn east and drive for about 3.5 miles. Nearest services are in Moorhead, Glyndon, Hawley and Buffalo River State Park.

You can visit Bluestem Prairie anytime, but reservations are necessary for the prairie chicken blinds; call the Conservancy's Northern Tallgrass Prairie Office at (218) 498-2679.

Notes from MinnesotaSeasons.com

Parking

North Parking (SNA)
N46 51.313, W96 28.405

Southeast Parking (SNA)
N46 49.984, W96 27.149

No maintained trails

Most of Bluestem Prairie SNA and a small part of Buffalo River State Park are on this preserve.

DISCLAIMER OF WARRANTIES AND LIMITATIONS OF LIABILITY

MinnesotaSeasons.com, The Nature Conservancy, U.S. Department of Agriculture, Forest Service, U.S. Fish and Wildlife Service, the state of Minnesota, the Minnesota Department of Natural Resources, and their employees, make no representations or warranties, express or implied, with respect to the use of or reliance on the data provided herewith, regardless of its format or means of transmission. There are no guarantees or representations to the user as to the accuracy, currency, completeness, suitability or reliability of this data for any purpose. THE USER ACCEPTS THE DATA AND/OR SOFTWARE "AS IS" AND ASSUMES ALL RISKS ASSOCIATED WITH ITS USE.

IN NO EVENT SHALL MINNESOTASEASONS.COM, TNC, USDA-FS, USFWS, OR MNDNR BE LIABLE FOR ANY DIRECT, INDIRECT, INCIDENTAL, SPECIAL, EXEMPLARY, OR CONSEQUENTIAL DAMAGES (INCLUDING, BUT NOT LIMITED TO, PROCUREMENT OF SUBSTITUTE GOODS OR SERVICES; LOSS OF USE, DATA, OR PROFITS; OR BUSINESS INTERRUPTION) HOWEVER CAUSED AND ON ANY THEORY OF LIABILITY, WHETHER IN CONTRACT, STRICT LIABILITY, OR TORT (INCLUDING NEGLIGENCE OR OTHERS) ARISING IN ANY WAY OUT OF THE USE OF THIS DATA, EVEN IF ADVISED OF THE POSSIBILITY OF SUCH DAMAGE OR FOR ANY CLAIM BY ANY OTHER PARTY.

Your use of the data is acceptance on your part of the terms and conditions set forth herein.