

Bur Oak WMA

Le Sueur County



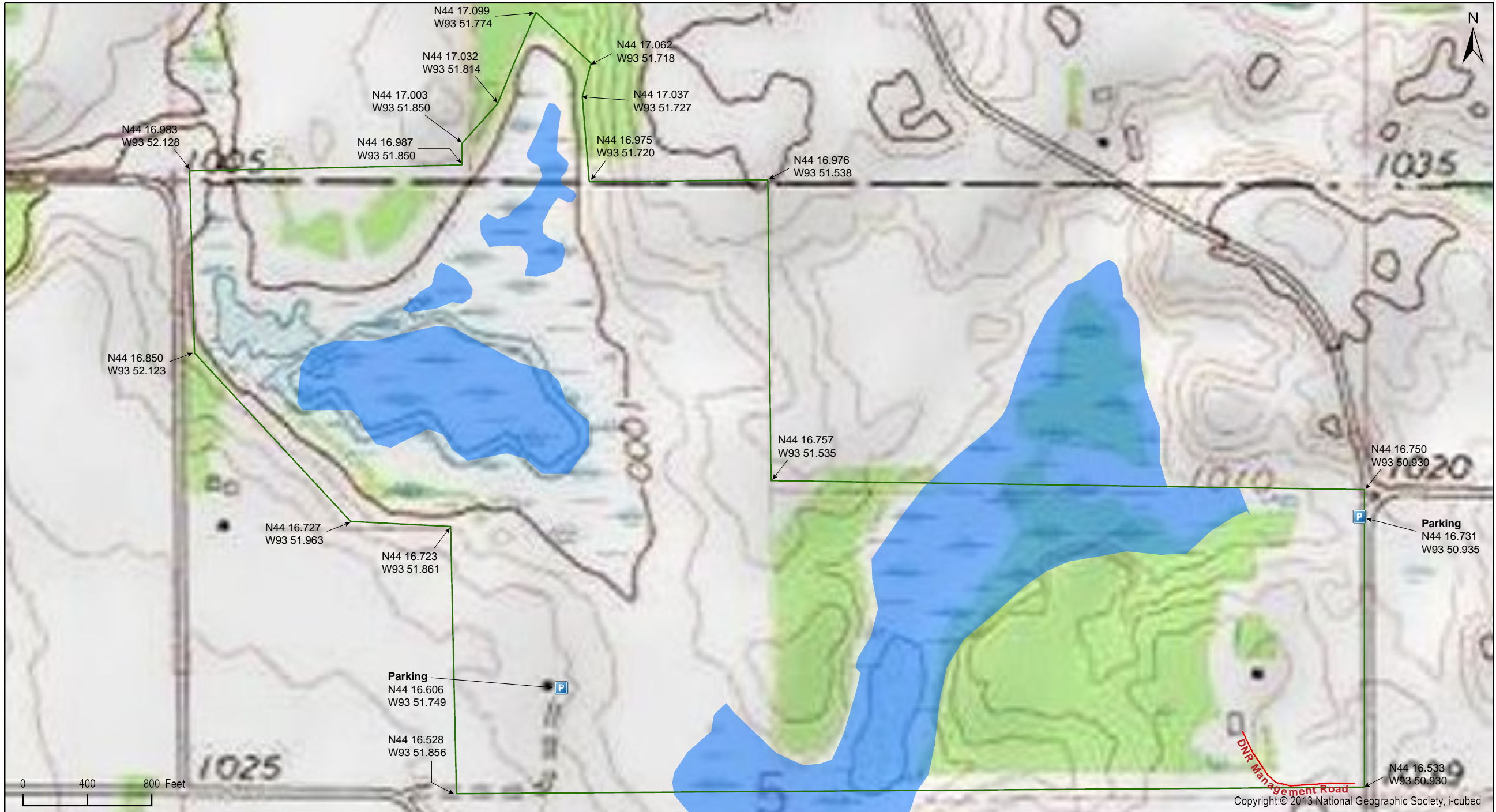
Bur Oak WMA

Le Sueur County



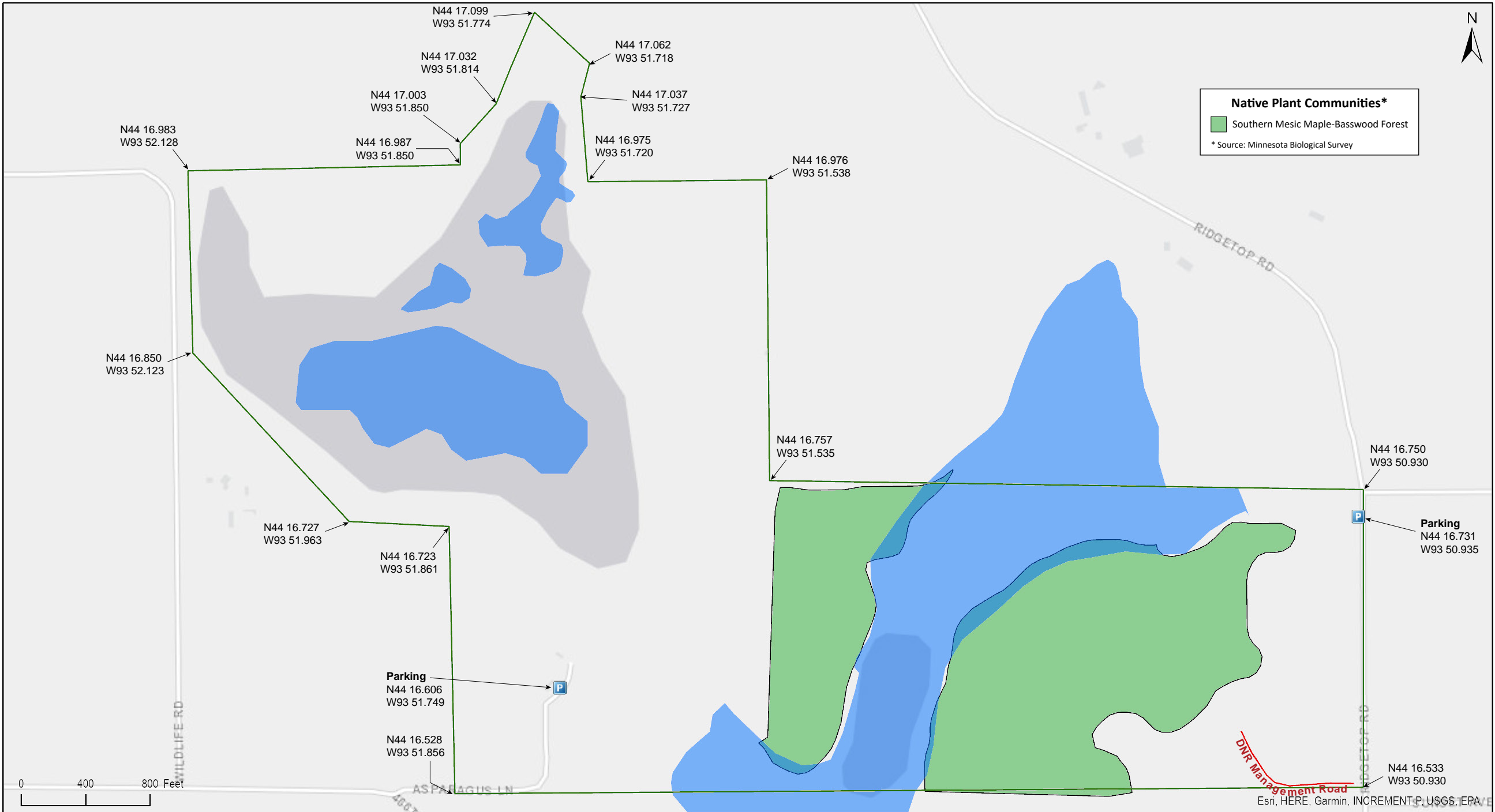
Bur Oak WMA

Le Sueur County



Bur Oak WMA

Le Sueur County







Bur Oak WMA

Directions and Notes from Minnesota DNR

Directions

From Cleveland, go 1 3/4 miles S on Cty Rd 104 then 1 mile W on CSAH 18 then 1 3/4 miles S and E on Co Rd 106

Notes from MinnesotaSeasons.com

Parking

Bur Oak WMA is split north to south by a shallow marsh and pond. Parking is available on both sides.

East: Ridgetop Road (County Road 104)

There is a field access/pulloff on the west side of Ridgetop Road (County Road 104) near the northeast corner of the WMA. This parking spots gives access to the eastern upland portion of the WMA. Park on the field access.

N44 16.731, W93 50.935

West: Asparagus Lane

Asparagus Lane ends a short distance into the WMA at the southwest corner. There is a grassy area and a turn-around loop at the end of the road. This parking area gives access to the western upland portion of the WMA. Park on the grass.

N44 16.606, W93 51.749

DISCLAIMER OF WARRANTIES AND LIMITATIONS OF LIABILITY

MinnesotaSeasons.com, The Nature Conservancy, U.S. Department of Agriculture, Forest Service, U.S. Fish and Wildlife Service, the state of Minnesota, the Minnesota Department of Natural Resources, and their employees, make no representations or warranties, express or implied, with respect to the use of or reliance on the data provided herewith, regardless of its format or means of transmission. There are no guarantees or representations to the user as to the accuracy, currency, completeness, suitability or reliability of this data for any purpose. THE USER ACCEPTS THE DATA AND/OR SOFTWARE "AS IS" AND ASSUMES ALL RISKS ASSOCIATED WITH ITS USE.

IN NO EVENT SHALL MINNESOTASEASONS.COM, TNC, USDA-FS, USFWS, OR MNDNR BE LIABLE FOR ANY DIRECT, INDIRECT, INCIDENTAL, SPECIAL, EXEMPLARY, OR CONSEQUENTIAL DAMAGES (INCLUDING, BUT NOT LIMITED TO, PROCUREMENT OF SUBSTITUTE GOODS OR SERVICES; LOSS OF USE, DATA, OR PROFITS; OR BUSINESS INTERRUPTION) HOWEVER CAUSED AND ON ANY THEORY OF LIABILITY, WHETHER IN CONTRACT, STRICT LIABILITY, OR TORT (INCLUDING NEGLIGENCE OR OTHERS) ARISING IN ANY WAY OUT OF THE USE OF THIS DATA, EVEN IF ADVISED OF THE POSSIBILITY OF SUCH DAMAGE OR FOR ANY CLAIM BY ANY OTHER PARTY.

Your use of the data is acceptance on your part of the terms and conditions set forth herein.