

# Clinton Falls Dwarf Trout Lily SNA

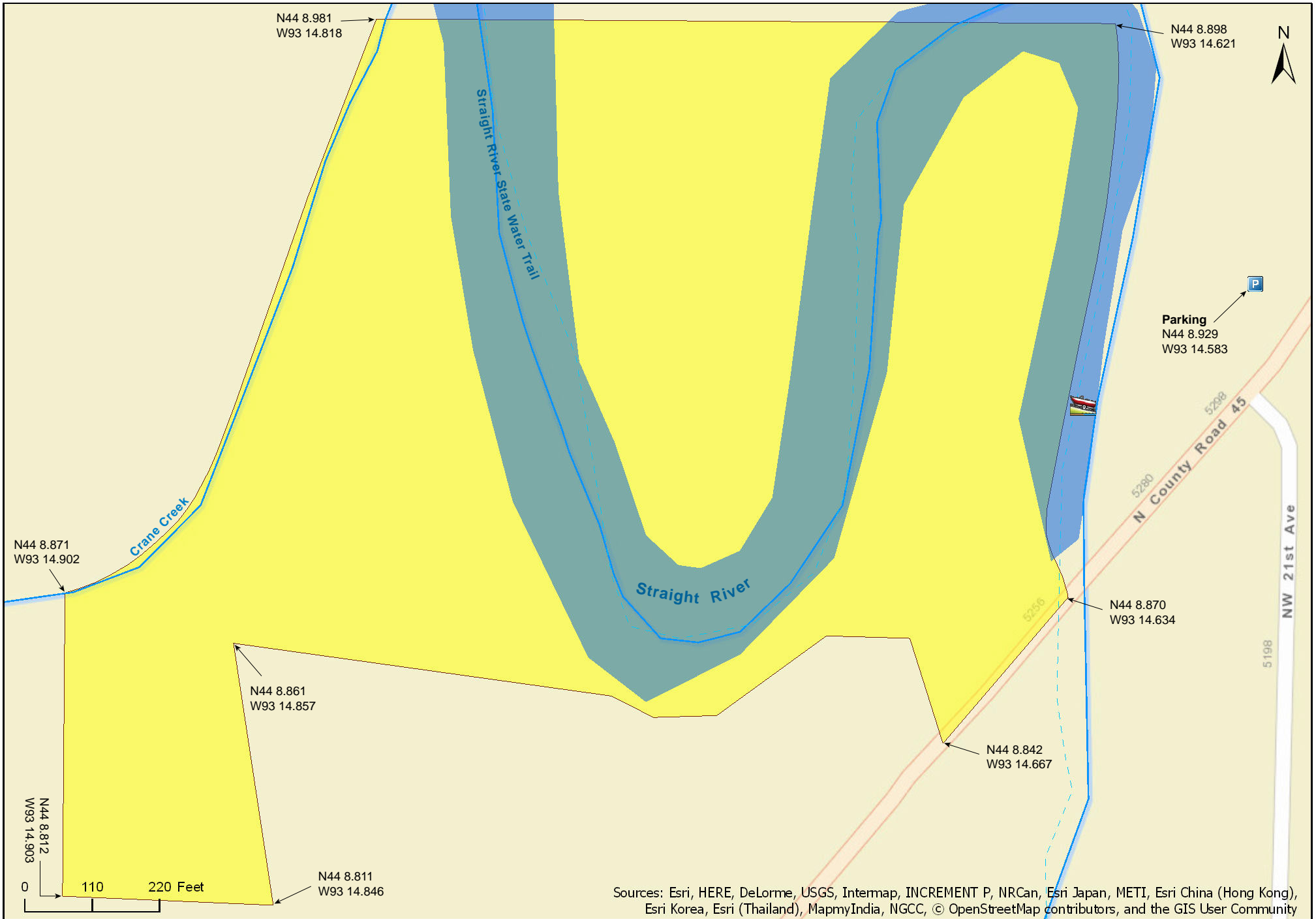
Steele County



Source: Esri, DigitalGlobe, GeoEye, Earthstar Geographics, CNES/Airbus DS, USDA, USGS, AeroGRID, IGN, and the GIS User Community

# Clinton Falls Dwarf Trout Lily SNA

Steele County



Sources: Esri, HERE, DeLorme, USGS, Intermap, INCREMENT P, NRCan, Esri Japan, METI, Esri China (Hong Kong), Esri Korea, Esri (Thailand), MapmyIndia, NGCC, © OpenStreetMap contributors, and the GIS User Community

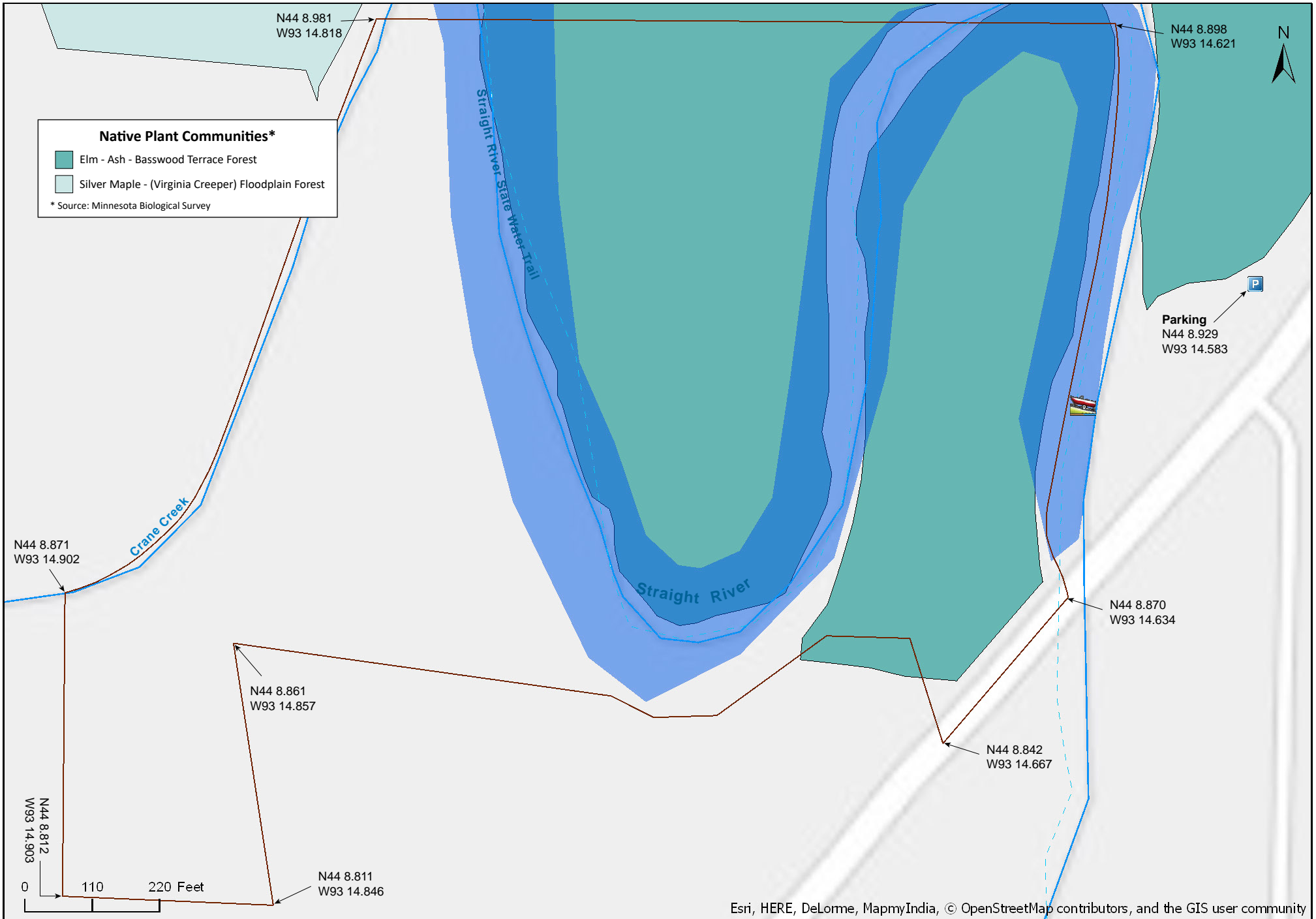
# Clinton Falls Dwarf Trout Lily SNA

Steele County



# Clinton Falls Dwarf Trout Lily SNA

Steele County



Esri, HERE, DeLorme, MapmyIndia, © OpenStreetMap contributors, and the GIS user community



Source: Esri, DigitalGlobe, GeoEye, Earthstar Geographics, CNES/Airbus DS, USDA, USGS, AeroGRID, IGN, and the GIS User Community

# Clinton Falls Dwarf Trout Lily SNA

## **Directions and Notes from Minnesota DNR**

**Directions:** From Clinton Falls 0.5 mile N on Co Hwy 45. Park in water access on W. Hike S across bridge, over guard rail, past powerlines, and into woods of site. Also accessible by boat from water access.

**Lat/Lon:** 44.148807, -93.243055

This site has no maintained trails or other recreational facilities. The Straight River Water Trail passes through this site.

## **Notes from MinnesotaSeasons.com**

### **Parking**

Straight River Public Water Access #2  
N44 8.929, W93 14.597

### **Signage**

There is no wood routed sign but the boundaries are well marked.

## **DISCLAIMER OF WARRANTIES AND LIMITATIONS OF LIABILITY**

MinnesotaSeasons.com, The Nature Conservancy, U.S. Department of Agriculture, Forest Service, U.S. Fish and Wildlife Service, the state of Minnesota, the Minnesota Department of Natural Resources, and their employees, make no representations or warranties, express or implied, with respect to the use of or reliance on the data provided herewith, regardless of its format or means of transmission. There are no guarantees or representations to the user as to the accuracy, currency, completeness, suitability or reliability of this data for any purpose. THE USER ACCEPTS THE DATA AND/OR SOFTWARE "AS IS" AND ASSUMES ALL RISKS ASSOCIATED WITH ITS USE.

IN NO EVENT SHALL MINNESOTASEASONS.COM, TNC, USDA-FS, USFWS, OR MNDNR BE LIABLE FOR ANY DIRECT, INDIRECT, INCIDENTAL, SPECIAL, EXEMPLARY, OR CONSEQUENTIAL DAMAGES (INCLUDING, BUT NOT LIMITED TO, PROCUREMENT OF SUBSTITUTE GOODS OR SERVICES; LOSS OF USE, DATA, OR PROFITS; OR BUSINESS INTERRUPTION) HOWEVER CAUSED AND ON ANY THEORY OF LIABILITY, WHETHER IN CONTRACT, STRICT LIABILITY, OR TORT (INCLUDING NEGLIGENCE OR OTHERS) ARISING IN ANY WAY OUT OF THE USE OF THIS DATA, EVEN IF ADVISED OF THE POSSIBILITY OF SUCH DAMAGE OR FOR ANY CLAIM BY ANY OTHER PARTY.

Your use of the data is acceptance on your part of the terms and conditions set forth herein.