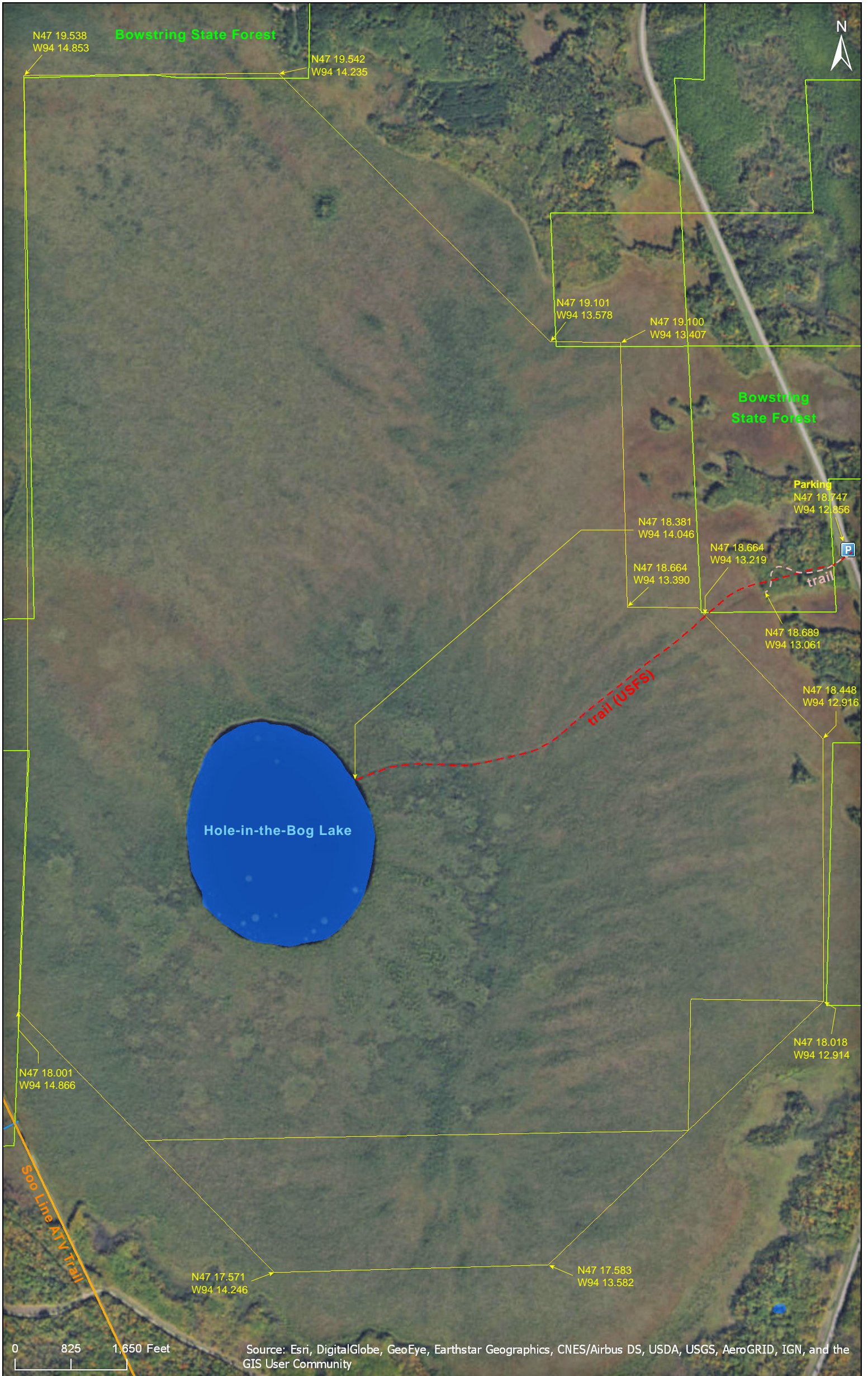


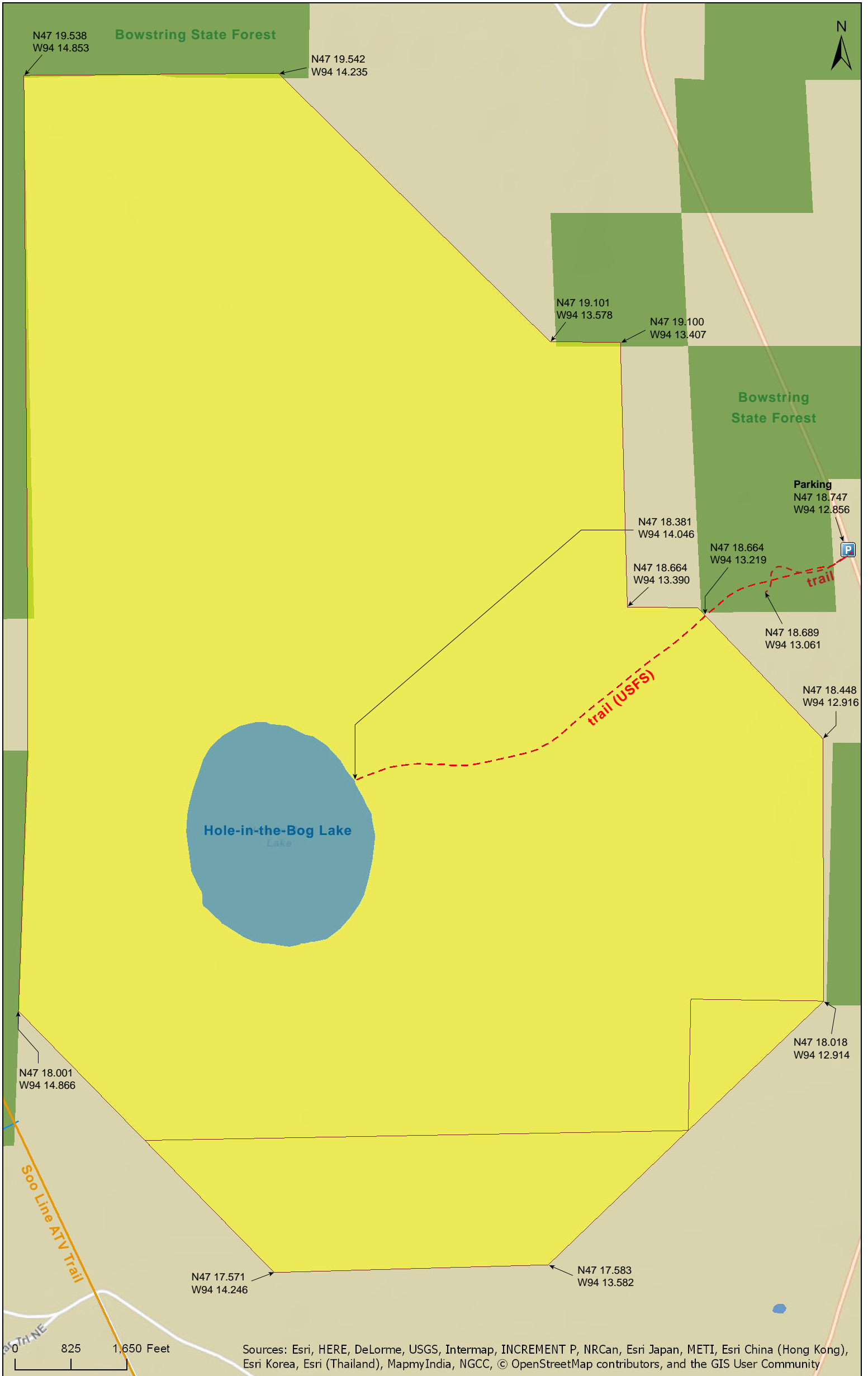
# Hole in the Bog Peatland SNA

Cass County



# Hole in the Bog Peatland SNA

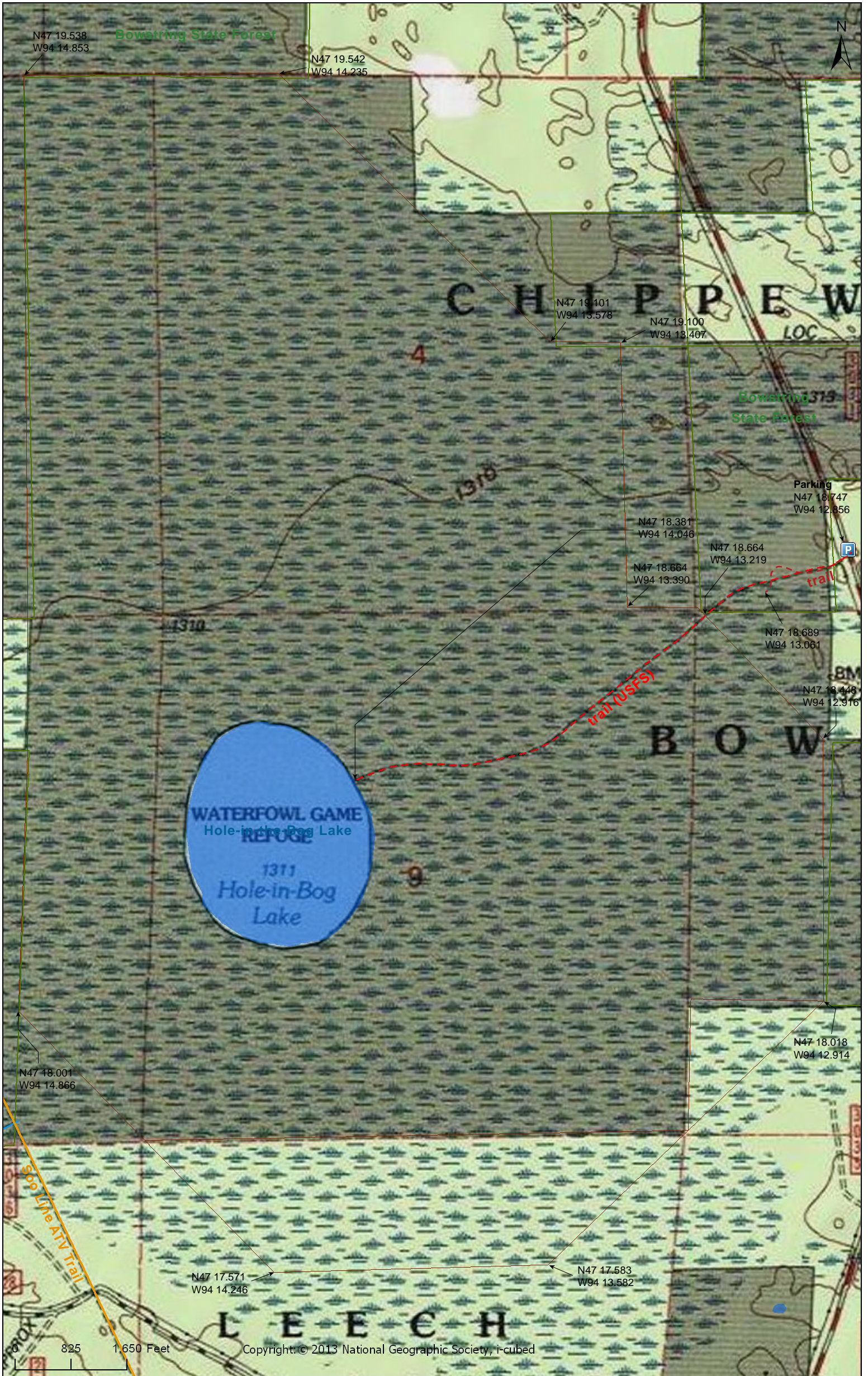
Cass County

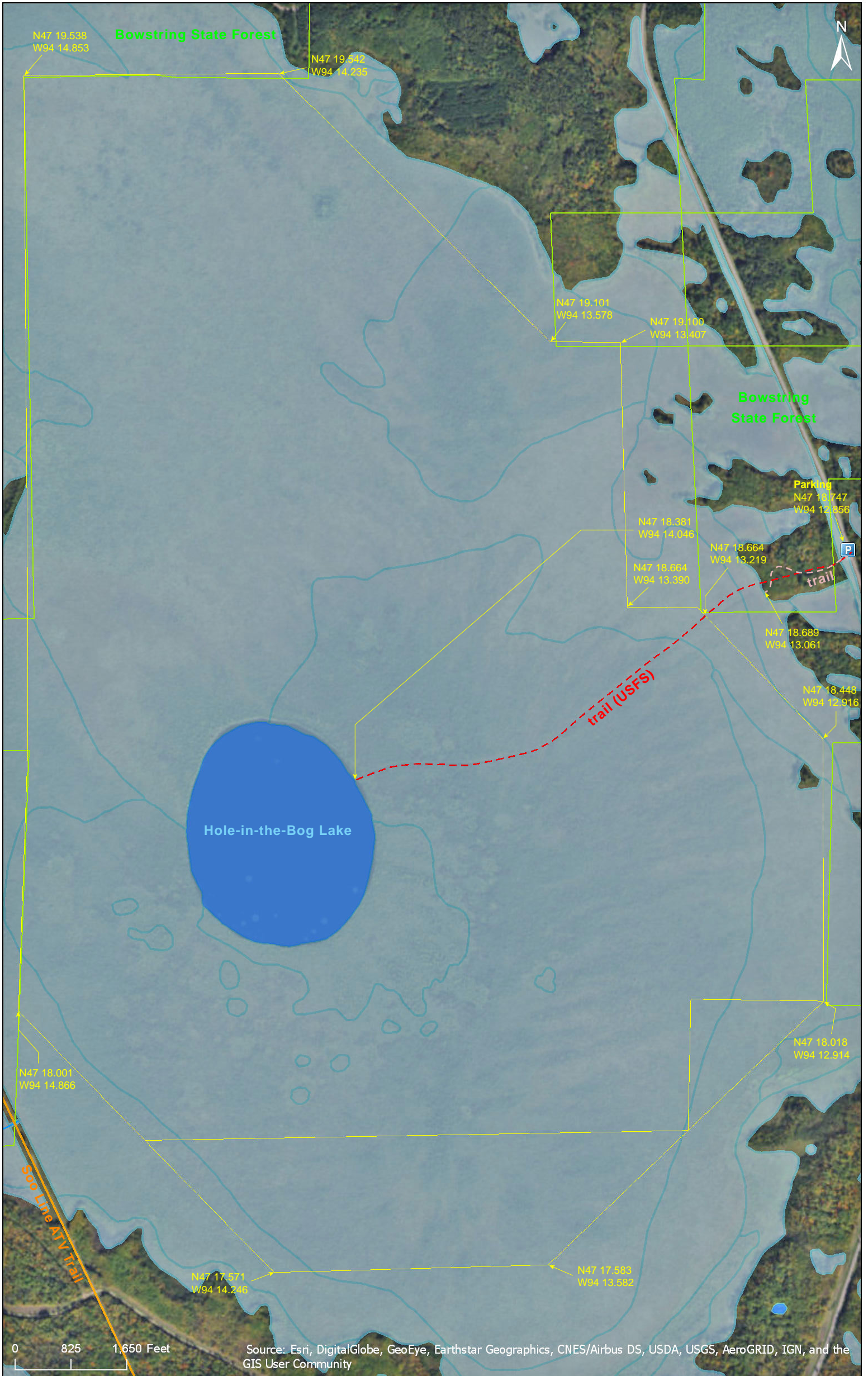


Sources: Esri, HERE, DeLorme, USGS, Intermap, INCREMENT P, NRCan, Esri Japan, METI, Esri China (Hong Kong), Esri Korea, Esri (Thailand), MapmyIndia, NGCC, © OpenStreetMap contributors, and the GIS User Community

# Hole in the Bog Peatland SNA

Cass County





# Hole in the Bog Peatland SNA

## **Directions and Notes from Minnesota DNR**

**Directions:** From Bena 2.5 miles S on Co Hwy 8. Park in pull-off on W. Trek 0.25 mile W into site. GPS recommended.

**Lat/Lon:** 47.312442, -94.214262

A GPS and detailed topographical maps are advised to visit this site. This site has no maintained trails or other recreational facilities. This site is within Battleground State Forest.

## **Notes from MinnesotaSeasons.com**

### **Parking**

N47 18.747, W94 12.856

### **Hiking Trail**

The National Forest Service shows a 1.06 mile trail leading to the “hole” in the bog. In June, 2013, a trail led from the parking area through the woods to the bog. The trail appeared to end at the edge of the bog 200 yards short of the SNA boundary. If the trail continued to the “hole”, it was not visible on the ground.

## **DISCLAIMER OF WARRANTIES AND LIMITATIONS OF LIABILITY**

MinnesotaSeasons.com, The Nature Conservancy, U.S. Department of Agriculture, Forest Service, U.S. Fish and Wildlife Service, the state of Minnesota, the Minnesota Department of Natural Resources, and their employees, make no representations or warranties, express or implied, with respect to the use of or reliance on the data provided herewith, regardless of its format or means of transmission. There are no guarantees or representations to the user as to the accuracy, currency, completeness, suitability or reliability of this data for any purpose. **THE USER ACCEPTS THE DATA AND/OR SOFTWARE "AS IS" AND ASSUMES ALL RISKS ASSOCIATED WITH ITS USE.**

**IN NO EVENT SHALL MINNESOTASEASONS.COM, TNC, USDA-FS, USFWS, OR MNDNR BE LIABLE FOR ANY DIRECT, INDIRECT, INCIDENTAL, SPECIAL, EXEMPLARY, OR CONSEQUENTIAL DAMAGES (INCLUDING, BUT NOT LIMITED TO, PROCUREMENT OF SUBSTITUTE GOODS OR SERVICES; LOSS OF USE, DATA, OR PROFITS; OR BUSINESS INTERRUPTION) HOWEVER CAUSED AND ON ANY THEORY OF LIABILITY, WHETHER IN CONTRACT, STRICT LIABILITY, OR TORT (INCLUDING NEGLIGENCE OR OTHERS) ARISING IN ANY WAY OUT OF THE USE OF THIS DATA, EVEN IF ADVISED OF THE POSSIBILITY OF SUCH DAMAGE OR FOR ANY CLAIM BY ANY OTHER PARTY.**

Your use of the data is acceptance on your part of the terms and conditions set forth herein.