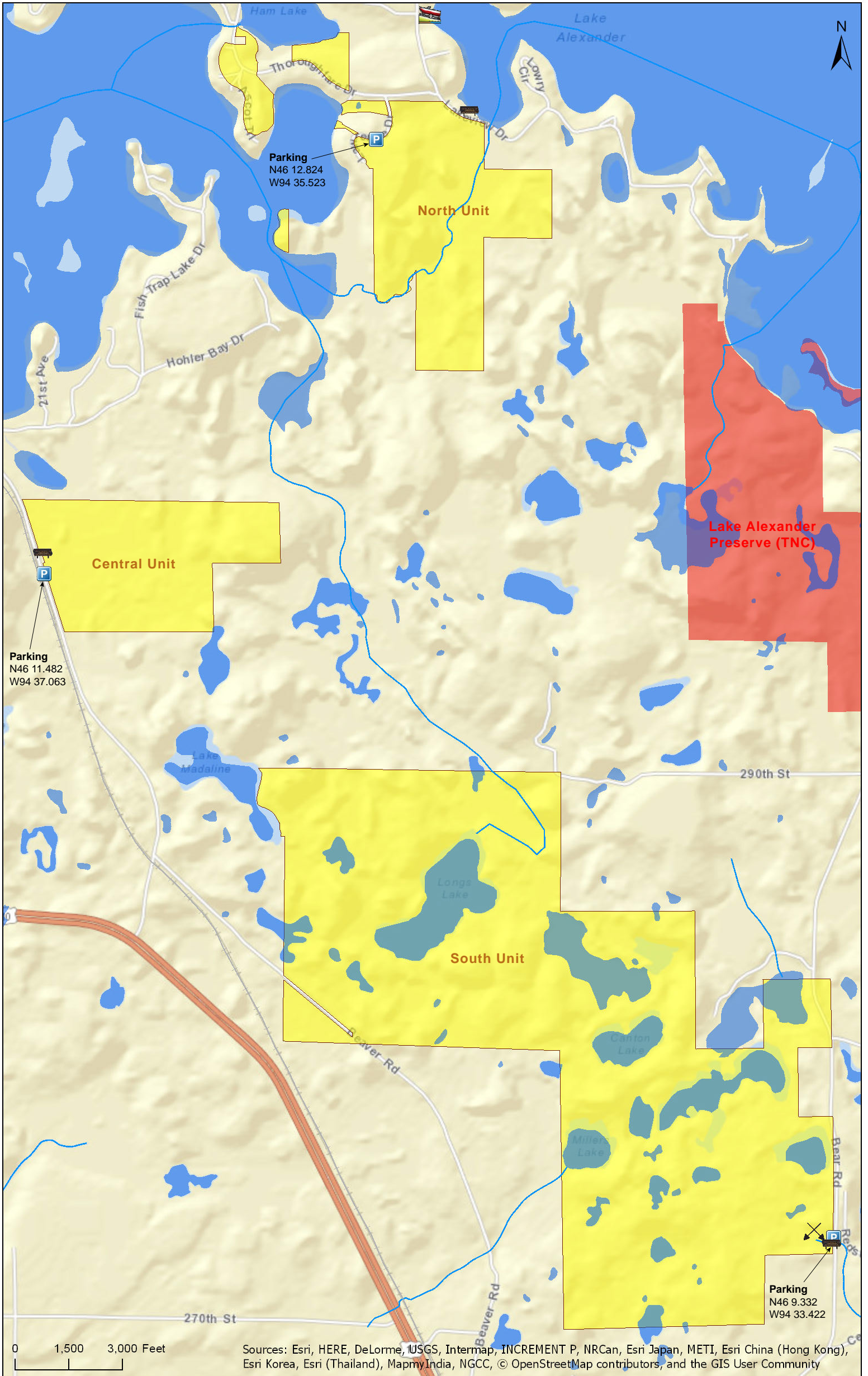


0 1,500 3,000 Feet

Source: Esri, DigitalGlobe, GeoEye, Earthstar Geographics, CNES/Airbus DS, USDA, USGS, AeroGRID, IGN, and the GIS User Community

Lake Alexander Woods SNA

Morrison County



Sources: Esri, HERE, DeLorme, USGS, Intermap, INCREMENT P, NRCan, Esri Japan, METI, Esri China (Hong Kong), Esri Korea, Esri (Thailand), MapmyIndia, NGCC, © OpenStreetMap contributors, and the GIS User Community

Lake Alexander Woods SNA

Directions and Notes from Minnesota DNR

North Unit

Directions: From Lincoln at US Hwy 10: 2.8 miles E on Co Hwy 3, then 0.5 mile S on Lakeview Dr, then 0.2 mile W on Thoroughfare Rd, then 0.18 mile S and W on Lawrence Dr. Park at gate on S.

Lat/Lon: 46.213734, -94.592051

Central Unit

The Minnesota DNR does not provide directions or parking information for this unit.

South Unit

Directions: From Cushing 1.5 miles N on Co Hwy 5 (Bear Rd). Park in pull-off on W.

Lat/Lon: 46.155532, -94.557036

This site has no maintained trails or other recreational facilities. This site is in an Audubon Important Bird Area and Watchable Wildlife Viewing Area.

Notes from MinnesotaSeasons.com

Parking

North Unit

N46 12.824, W94 35.523

Look for a gate on the south side of Lawrence Drive near the coordinates above. Park in front of the gate.

Central Unit

N46 11.482, W94 37.063

There is no designated parking area or parking spot for this unit. Park carefully on the east shoulder of Azure Road near the SNA sign. There is no ditch crossing and the shoulder drops off quickly. There is no place to pull completely off the paved shoulder.

South Unit

N46 9.332, W94 33.422

Park at a ditch crossing on the west side of Bear Road (County Road 5) at the coordinates above. In front of the parking spot there is a ribbon of wetland with a small amount of open water near the road. The wooden SNA sign is 200 feet to the south.

DISCLAIMER OF WARRANTIES AND LIMITATIONS OF LIABILITY

MinnesotaSeasons.com, The Nature Conservancy, U.S. Department of Agriculture, Forest Service, U.S. Fish and Wildlife Service, the state of Minnesota, the Minnesota Department of Natural Resources, and their employees, make no representations or warranties, express or implied, with respect to the use of or reliance on the data provided herewith, regardless of its format or means of transmission. There are no guarantees or representations to the user as to the accuracy, currency, completeness, suitability or reliability of this data for any purpose. **THE USER ACCEPTS THE DATA AND/OR SOFTWARE "AS IS" AND ASSUMES ALL RISKS ASSOCIATED WITH ITS USE.**

IN NO EVENT SHALL MINNESOTASEASONS.COM, TNC, USDA-FS, USFWS, OR MNDNR BE LIABLE FOR ANY DIRECT, INDIRECT, INCIDENTAL, SPECIAL, EXEMPLARY, OR CONSEQUENTIAL DAMAGES (INCLUDING, BUT NOT LIMITED TO, PROCUREMENT OF SUBSTITUTE GOODS OR SERVICES; LOSS OF USE, DATA, OR PROFITS; OR BUSINESS INTERRUPTION) HOWEVER CAUSED AND ON ANY THEORY OF LIABILITY, WHETHER IN CONTRACT, STRICT LIABILITY, OR TORT (INCLUDING NEGLIGENCE OR OTHERS) ARISING IN ANY WAY OUT OF THE USE OF THIS DATA, EVEN IF ADVISED OF THE POSSIBILITY OF SUCH DAMAGE OR FOR ANY CLAIM BY ANY OTHER PARTY.

Your use of the data is acceptance on your part of the terms and conditions set forth herein.