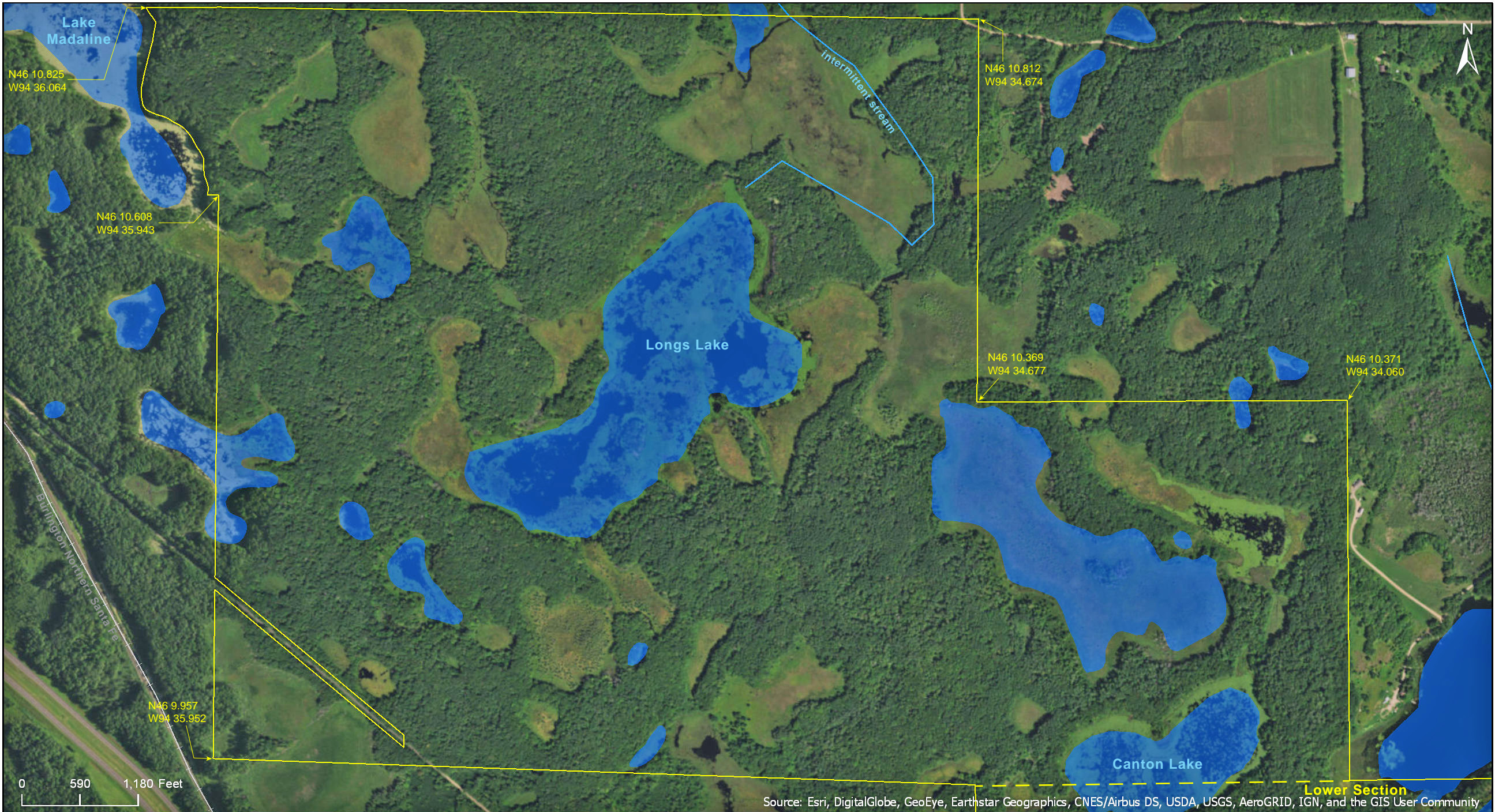


Lake Alexander Woods SNA South Unit, Upper Section

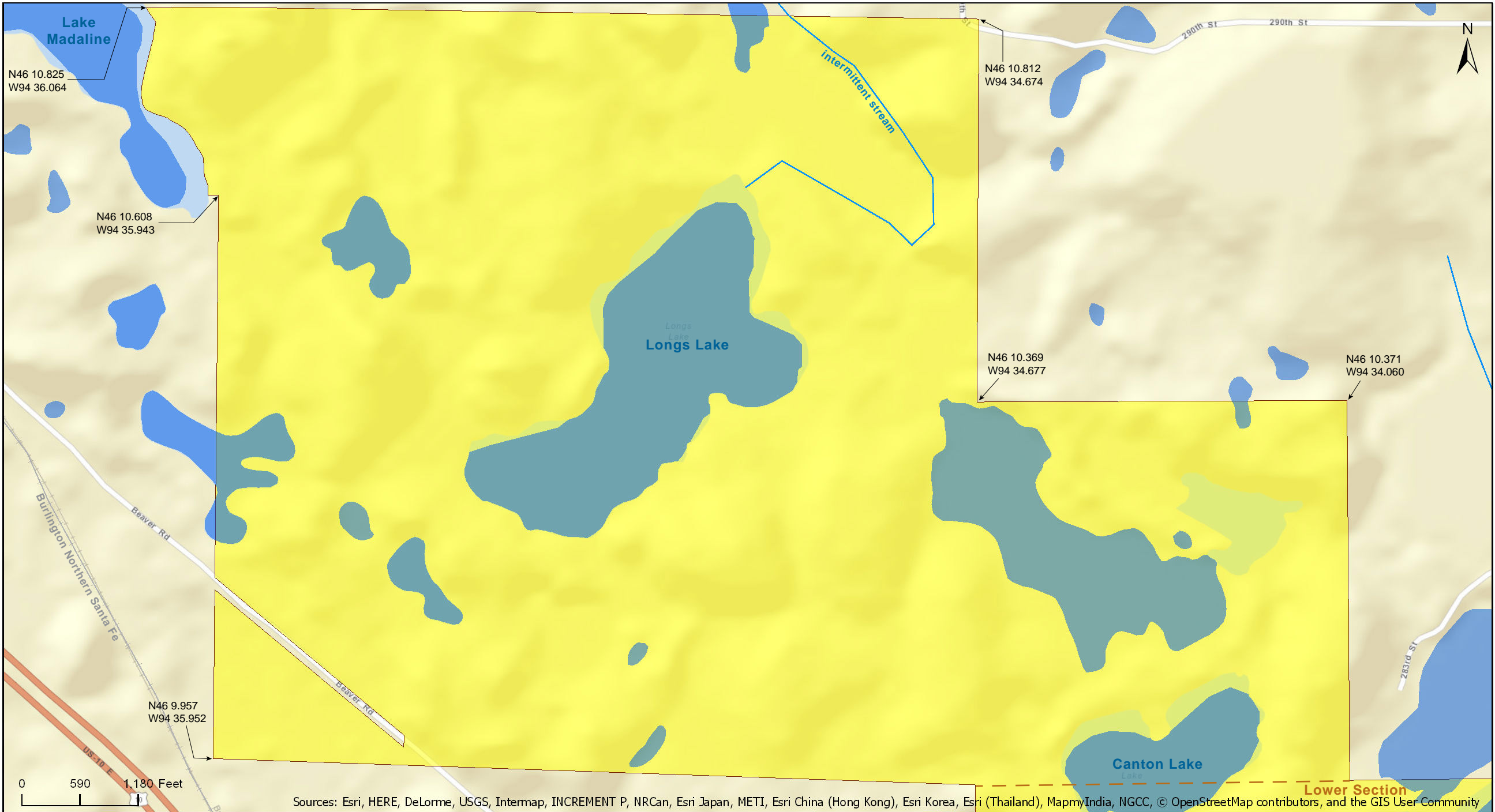
Morrison County



Source: Esri, DigitalGlobe, GeoEye, Earthstar Geographics, CNES/Airbus DS, USDA, USGS, AeroGRID, IGN, and the GIS User Community

Lake Alexander Woods SNA South Unit, Upper Section

Morrison County



Sources: Esri, HERE, DeLorme, USGS, Internap, INCREMENT P, NRCan, Esri Japan, METI, Esri China (Hong Kong), Esri Korea, Esri (Thailand), MapmyIndia, NGCC, © OpenStreetMap contributors, and the GIS User Community

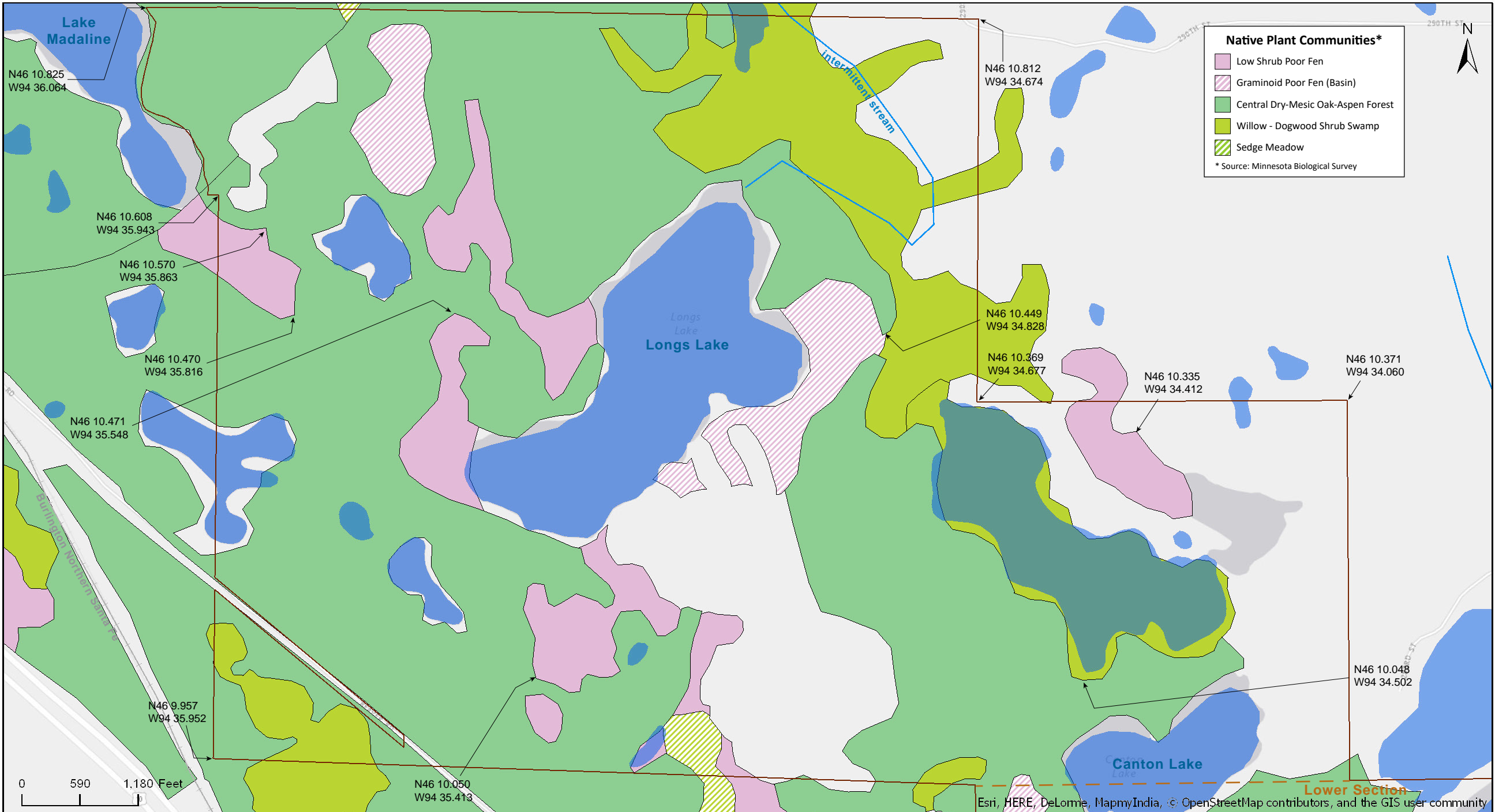
Lake Alexander Woods SNA South Unit, Upper Section

Morrison County

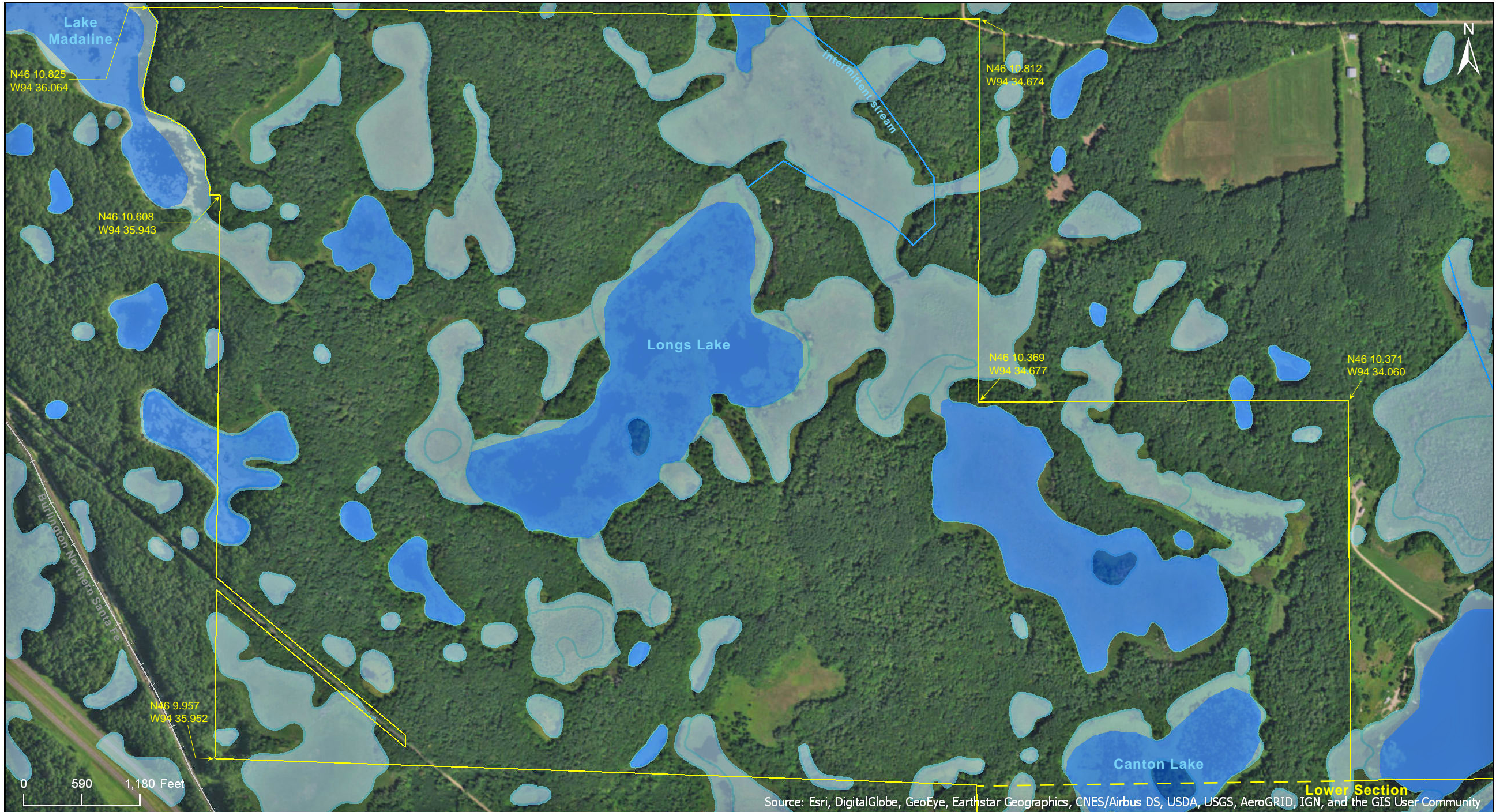


Lake Alexander Woods SNA South Unit, Upper Section

Morrison County



Lake Alexander Woods SNA South Unit, Upper Section



Source: Esri, DigitalGlobe, GeoEye, Earthstar Geographics, CNES/Airbus DS, USDA, USGS, AeroGRID, IGN, and the GIS User Community

Lake Alexander Woods SNA South Unit, Upper Section

Directions and Notes from Minnesota DNR

Directions: From Cushing 1.5 miles N on Co Hwy 5 (Bear Rd). Park in pull-off on W.

Lat/Lon: 46.155532, -94.557036

This site has no maintained trails or other recreational facilities. This site is in an Audubon Important Bird Area and Watchable Wildlife Viewing Area.

Notes from MinnesotaSeasons.com

Parking

N46 9.332, W94 33.422

Park at a ditch crossing on the west side of Bear Road (County Road 5) at the coordinates above. In front of the parking spot there is a ribbon of wetland with a small amount of open water near the road. The wooden SNA sign is 200 feet to the south.

DISCLAIMER OF WARRANTIES AND LIMITATIONS OF LIABILITY

MinnesotaSeasons.com, The Nature Conservancy, U.S. Department of Agriculture, Forest Service, U.S. Fish and Wildlife Service, the state of Minnesota, the Minnesota Department of Natural Resources, and their employees, make no representations or warranties, express or implied, with respect to the use of or reliance on the data provided herewith, regardless of its format or means of transmission. There are no guarantees or representations to the user as to the accuracy, currency, completeness, suitability or reliability of this data for any purpose. THE USER ACCEPTS THE DATA AND/OR SOFTWARE "AS IS" AND ASSUMES ALL RISKS ASSOCIATED WITH ITS USE.

IN NO EVENT SHALL MINNESOTASEASONS.COM, TNC, USDA-FS, USFWS, OR MNDNR BE LIABLE FOR ANY DIRECT, INDIRECT, INCIDENTAL, SPECIAL, EXEMPLARY, OR CONSEQUENTIAL DAMAGES (INCLUDING, BUT NOT LIMITED TO, PROCUREMENT OF SUBSTITUTE GOODS OR SERVICES; LOSS OF USE, DATA, OR PROFITS; OR BUSINESS INTERRUPTION) HOWEVER CAUSED AND ON ANY THEORY OF LIABILITY, WHETHER IN CONTRACT, STRICT LIABILITY, OR TORT (INCLUDING NEGLIGENCE OR OTHERS) ARISING IN ANY WAY OUT OF THE USE OF THIS DATA, EVEN IF ADVISED OF THE POSSIBILITY OF SUCH DAMAGE OR FOR ANY CLAIM BY ANY OTHER PARTY.

Your use of the data is acceptance on your part of the terms and conditions set forth herein.