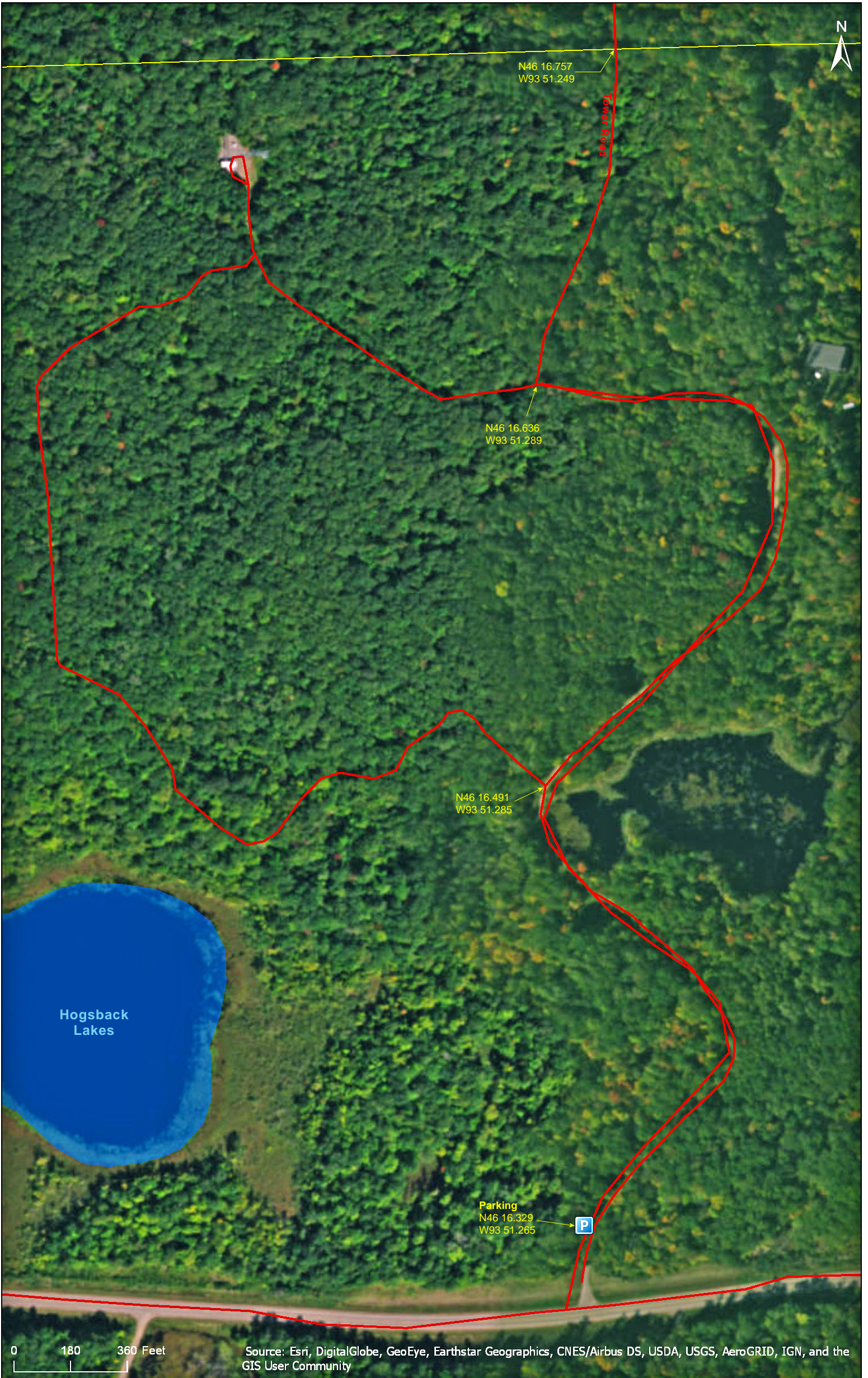


# Mille Lacs Moraine SNA Approach

Crow Wing County



# Mille Lacs Moraine SNA Approach

Crow Wing County



# Mille Lacs Moraine SNA

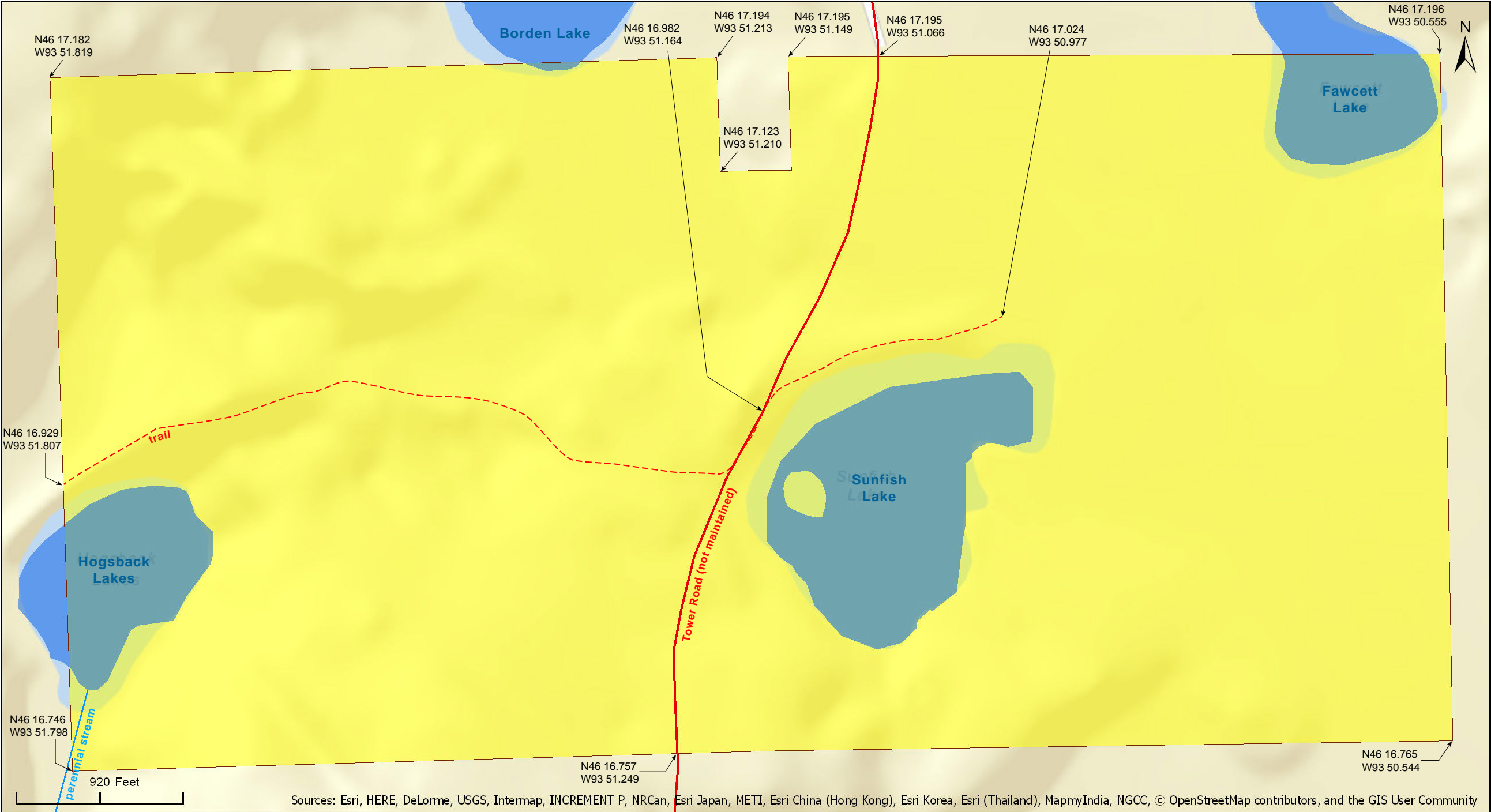
Crow Wing County



Source: Esri, DigitalGlobe, GeoEye, Earthstar Geographics, CNES/Airbus DS, USDA, USGS, AeroGRID, IGN, and the GIS User Community

# Mille Lacs Moraine SNA

Crow Wing County



Sources: Esri, HERE, DeLorme, USGS, Internmap, INCREMENT P, NRCan, Esri Japan, METI, Esri China (Hong Kong), Esri Korea, Esri (Thailand), MapmyIndia, NGCC, © OpenStreetMap contributors, and the GIS User Community

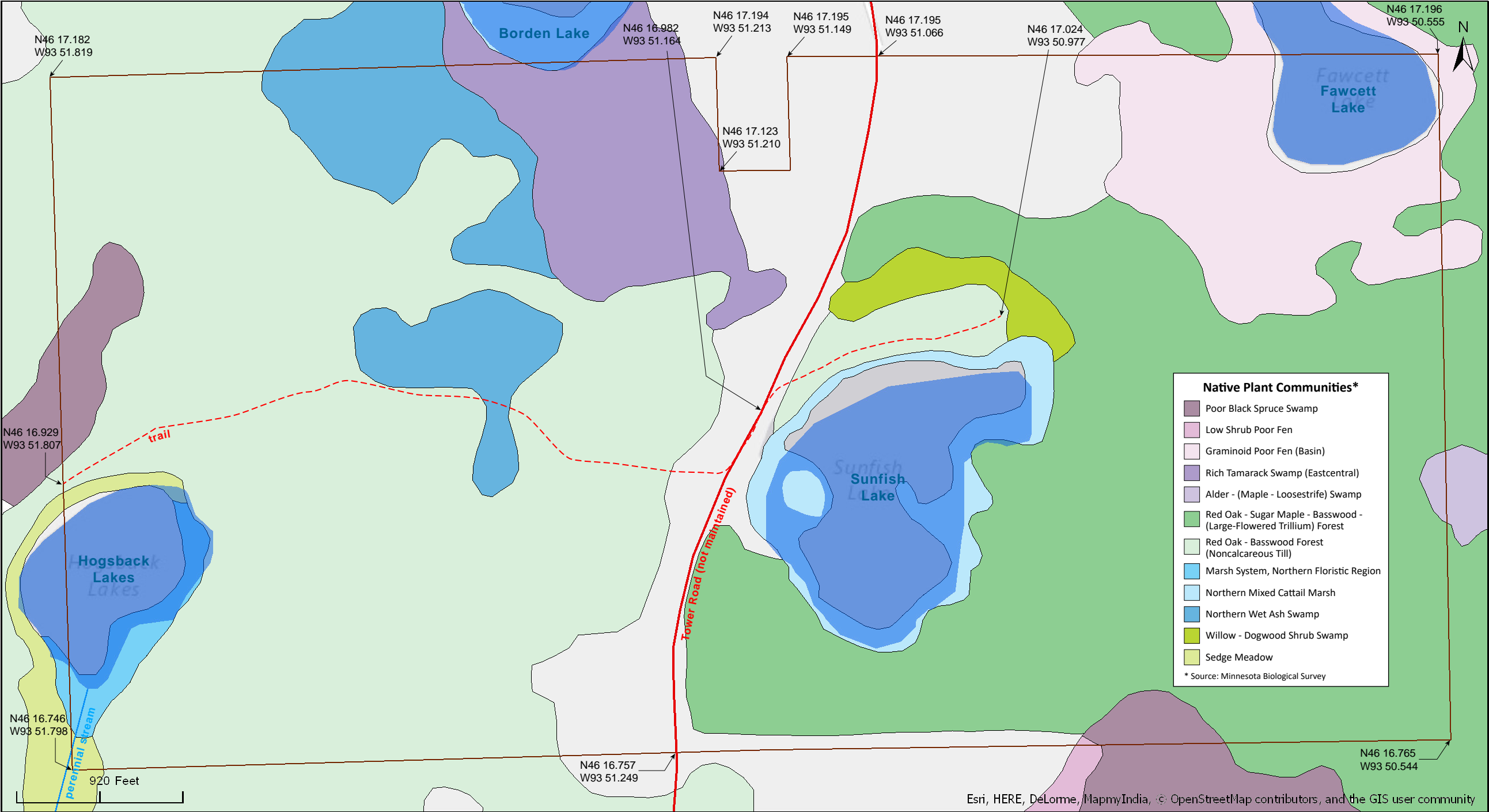
# Mille Lacs Moraine SNA

Crow Wing County



# Mille Lacs Moraine SNA

Crow Wing County





# Mille Lacs Moraine SNA

## **Directions and Notes from Minnesota DNR**

**Directions:** From Garrison 1.6 miles S on US Hwy 169. Then 1.5 miles W on Co Rd 26. Park along S Tower Rd shoulder. Do not block gate. Hike 0.5 mile N and W along this maintained road. Then hike 0.13 mile N on unmaintained road to gate at SNA boundary.

**Lat/Lon:** 46.272149, -93.854418

This site has no maintained trails or other recreational facilities. This site is in an Audubon Important Bird Area.

This is the first SNA to be designated in Crow Wing County.

## **Notes from MinnesotaSeasons.com**

### **Parking**

N46 16.329, W93 51.265

From County Road 26 turn north on South Tower Road. Park on the shoulder of the road near the gate. Do not block the gate. Hike 0.54 mile north and west on South Tower Road, a minimum maintenance road. Bear north on an unmaintained road (still Tower Road), and hike 260 yards to the gate at the SNA boundary.

### **Hiking Trails**

Tower Road, an unmaintained road, passes through the site from north to south. A hiking trail passes through the site from west to east. It ends abruptly at a channel near the northeast shore of Sunfish Lake.

### **Deer Flies**

Deer flies can be bothersome here in June and July. They certainly were during my visit on July 20, 2013. After a few minutes on South Tower Road, I returned to the car to retrieve a mosquito headnet. The deer flies stayed with me for the duration of the visit. The mosquito headnet, worn over a hat, kept the flies off my neck and ears. Only a few times was it necessary to pull it down over my face. I did not suffer a single bite, even on my unprotected (but DEET sprayed) arms. Without the headnet the flies would have made the trip a very unpleasant experience. With the headnet they were a minor annoyance.

### **Plant Diversity**

South Tower Road turns east at the south boundary of the SNA. Where it turns, a

grassy road continues north between two gate posts with no gate (yet). This is Tower Road. If you are a plant enthusiast like me, stop right here and look around. There is an incredible diversity of plants within 15 yards of the gate posts. On a recent trip to this SNA (7/20/2013) I identified 51 plant species within this small area.

## **DISCLAIMER OF WARRANTIES AND LIMITATIONS OF LIABILITY**

MinnesotaSeasons.com, The Nature Conservancy, U.S. Department of Agriculture, Forest Service, U.S. Fish and Wildlife Service, the state of Minnesota, the Minnesota Department of Natural Resources, and their employees, make no representations or warranties, express or implied, with respect to the use of or reliance on the data provided herewith, regardless of its format or means of transmission. There are no guarantees or representations to the user as to the accuracy, currency, completeness, suitability or reliability of this data for any purpose. THE USER ACCEPTS THE DATA AND/OR SOFTWARE "AS IS" AND ASSUMES ALL RISKS ASSOCIATED WITH ITS USE.

IN NO EVENT SHALL MINNESOTASEASONS.COM, TNC, USDA-FS, USFWS, OR MNDNR BE LIABLE FOR ANY DIRECT, INDIRECT, INCIDENTAL, SPECIAL, EXEMPLARY, OR CONSEQUENTIAL DAMAGES (INCLUDING, BUT NOT LIMITED TO, PROCUREMENT OF SUBSTITUTE GOODS OR SERVICES; LOSS OF USE, DATA, OR PROFITS; OR BUSINESS INTERRUPTION) HOWEVER CAUSED AND ON ANY THEORY OF LIABILITY, WHETHER IN CONTRACT, STRICT LIABILITY, OR TORT (INCLUDING NEGLIGENCE OR OTHERS) ARISING IN ANY WAY OUT OF THE USE OF THIS DATA, EVEN IF ADVISED OF THE POSSIBILITY OF SUCH DAMAGE OR FOR ANY CLAIM BY ANY OTHER PARTY.

Your use of the data is acceptance on your part of the terms and conditions set forth herein.