

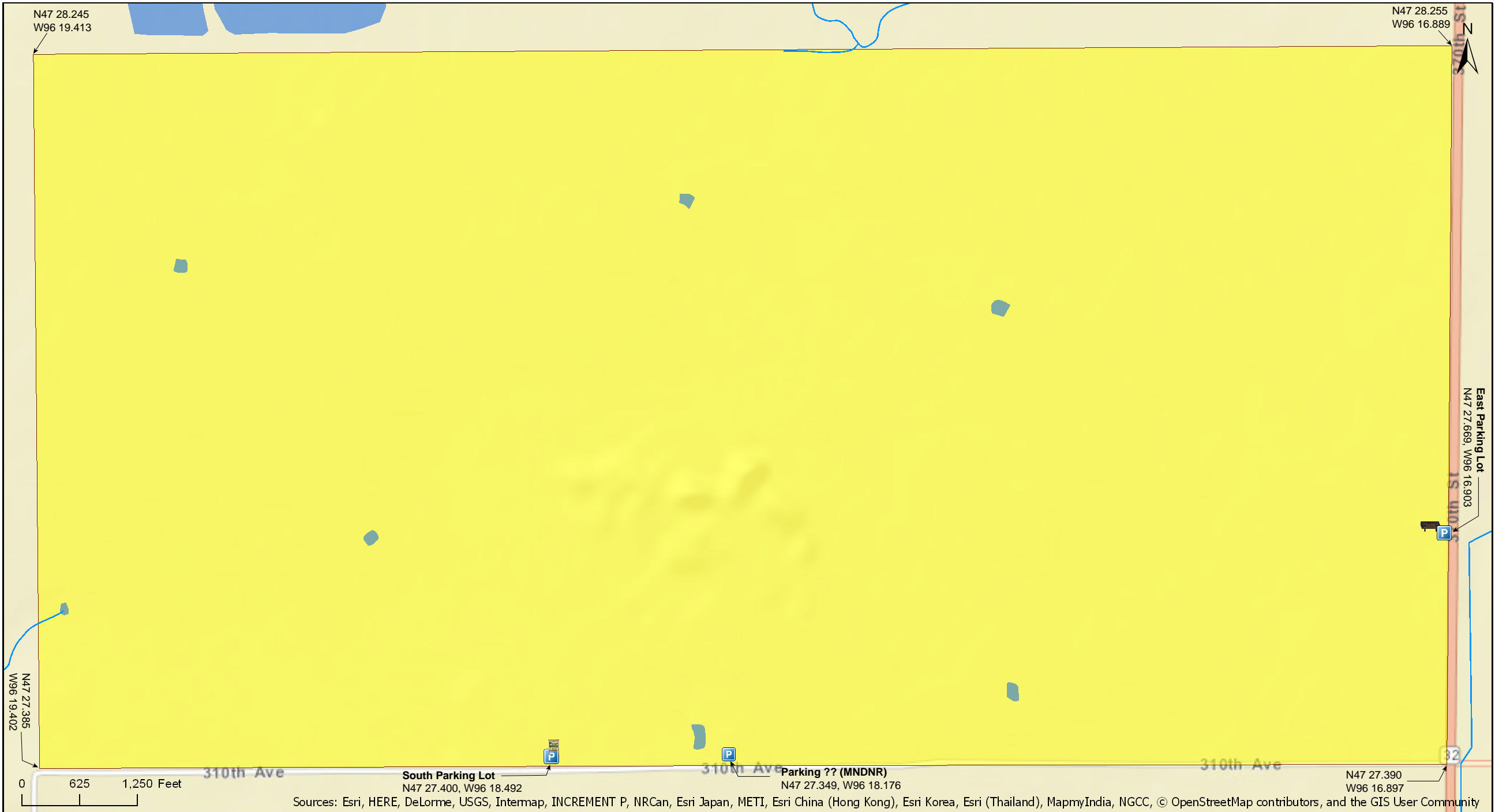
Prairie Smoke Dunes SNA

Norman County



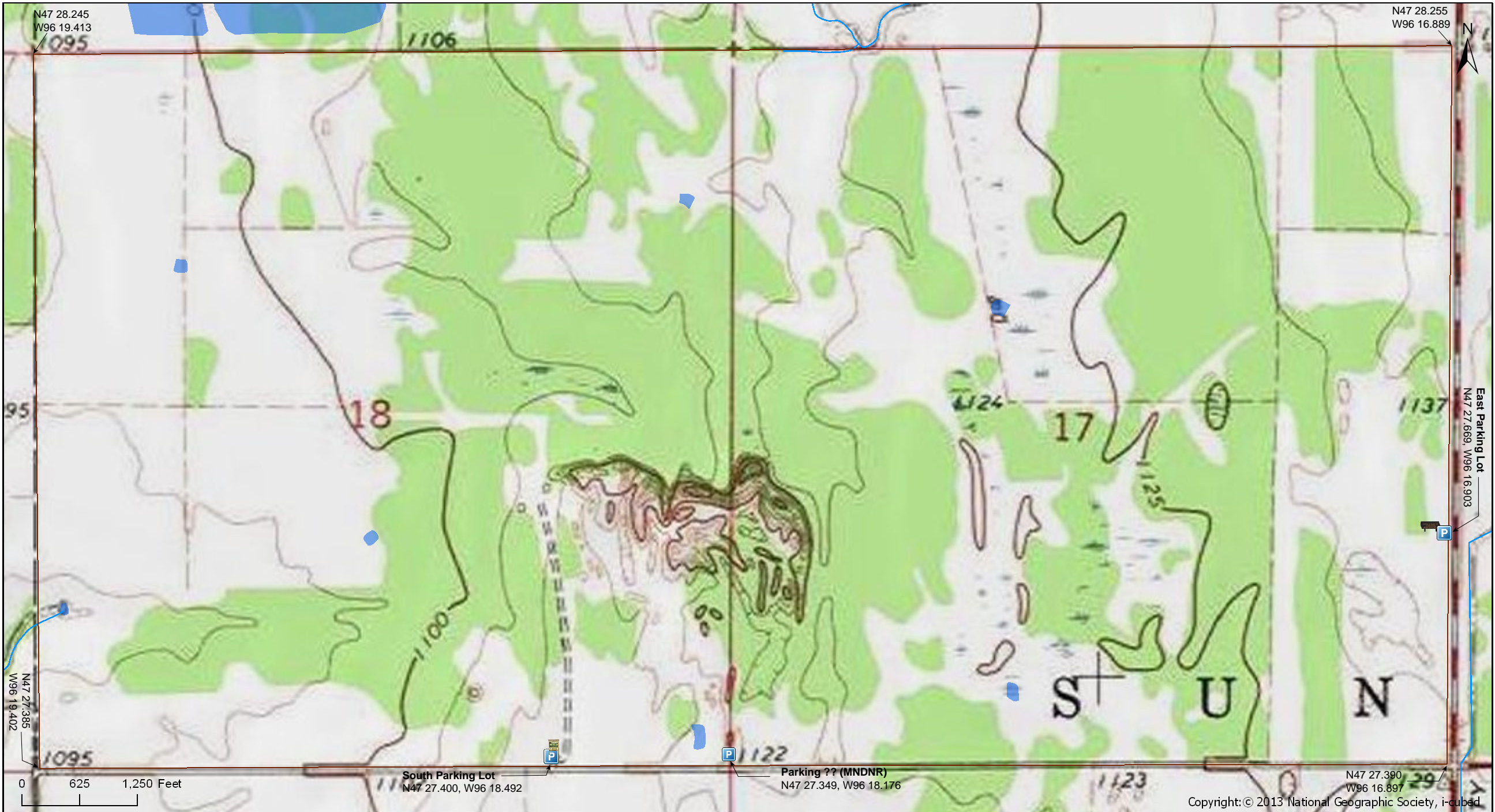
Prairie Smoke Dunes SNA

Norman County



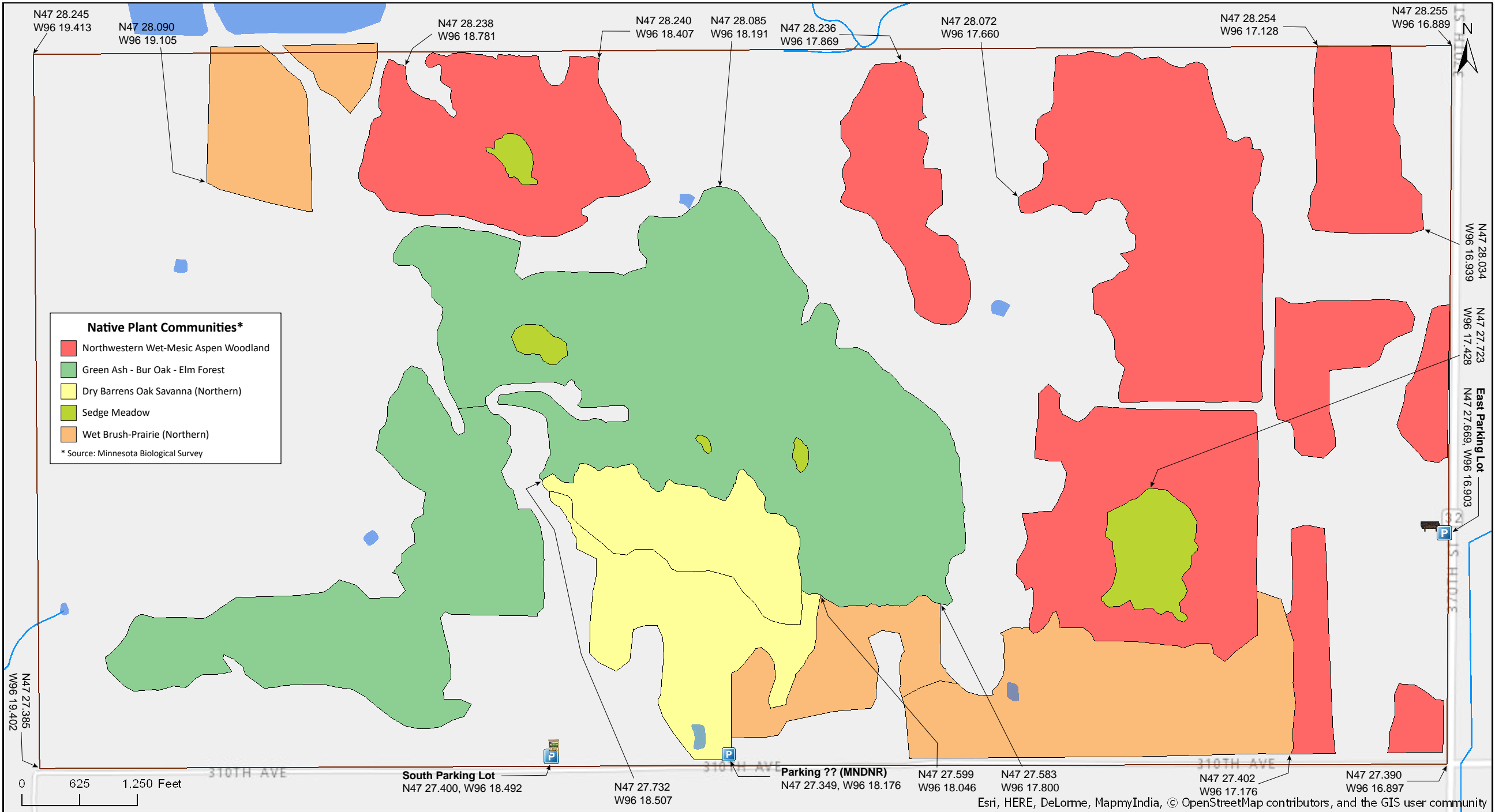
Prairie Smoke Dunes SNA

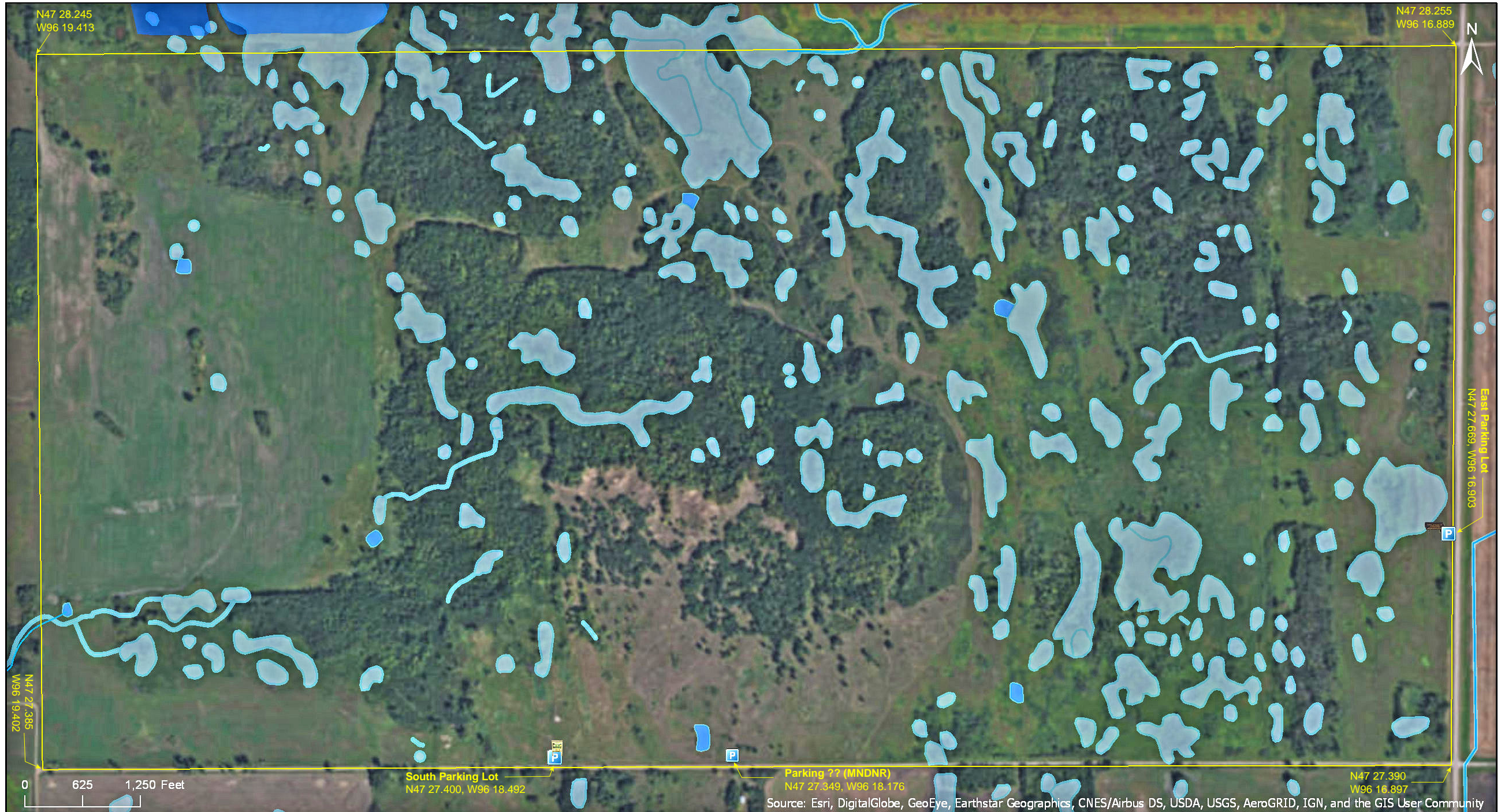
Norman County



Prairie Smoke Dunes SNA

Norman County





Prairie Smoke Dunes SNA

Directions and Notes from Minnesota DNR

Directions: From Fertile 5 miles S on MN Hwy 32, then 1 mile W on 310th Ave.
Park at gated pull-off on N. Hike 0.25 miles N to dunes.

Lat/Lon: 47.456561, -96.302927

This site has no maintained trails or other recreational facilities.

Notes from MinnesotaSeasons.com

Parking

East Parking Lot (MN Highway 32)
N47 27.669, W96 16.903

South Parking Lot (Norman County Road 7)
N47 27.400, W96 18.492

DISCLAIMER OF WARRANTIES AND LIMITATIONS OF LIABILITY

MinnesotaSeasons.com, The Nature Conservancy, U.S. Department of Agriculture, Forest Service, U.S. Fish and Wildlife Service, the state of Minnesota, the Minnesota Department of Natural Resources, and their employees, make no representations or warranties, express or implied, with respect to the use of or reliance on the data provided herewith, regardless of its format or means of transmission. There are no guarantees or representations to the user as to the accuracy, currency, completeness, suitability or reliability of this data for any purpose. THE USER ACCEPTS THE DATA AND/OR SOFTWARE "AS IS" AND ASSUMES ALL RISKS ASSOCIATED WITH ITS USE.

IN NO EVENT SHALL MINNESOTASEASONS.COM, TNC, USDA-FS, USFWS, OR MNDNR BE LIABLE FOR ANY DIRECT, INDIRECT, INCIDENTAL, SPECIAL, EXEMPLARY, OR CONSEQUENTIAL DAMAGES (INCLUDING, BUT NOT LIMITED TO, PROCUREMENT OF SUBSTITUTE GOODS OR SERVICES; LOSS OF USE, DATA, OR PROFITS; OR BUSINESS INTERRUPTION) HOWEVER CAUSED AND ON ANY THEORY OF LIABILITY, WHETHER IN CONTRACT, STRICT LIABILITY, OR TORT (INCLUDING NEGLIGENCE OR OTHERS) ARISING IN ANY WAY OUT OF THE USE OF THIS DATA, EVEN IF ADVISED OF THE POSSIBILITY OF SUCH DAMAGE OR FOR ANY CLAIM BY ANY OTHER PARTY.

Your use of the data is acceptance on your part of the terms and conditions set forth herein.