

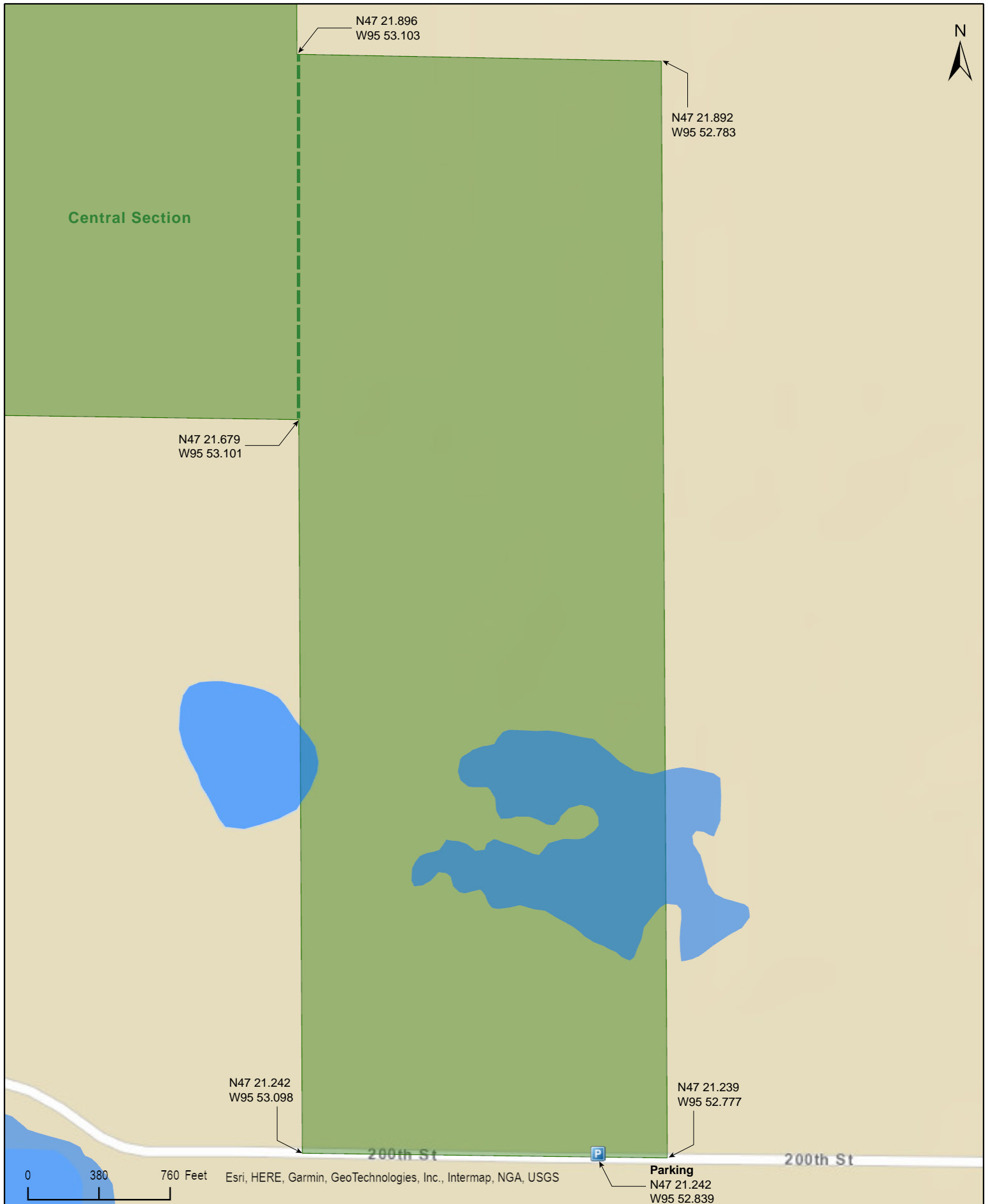
Rush WMA East Section

Mahnomen County



Rush WMA East Section

Mahnomen County



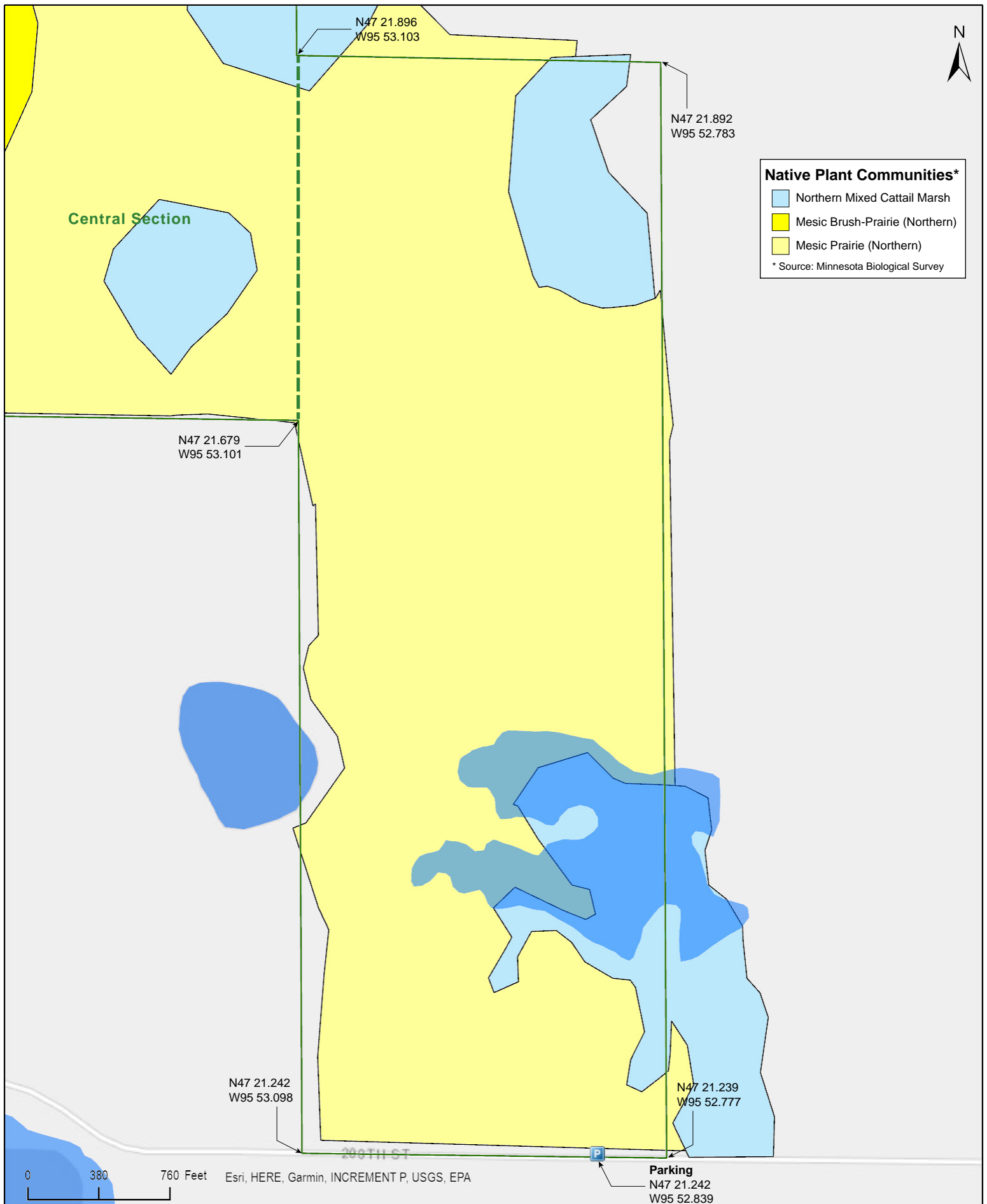
Rush WMA East Section

Mahnomen County



Rush WMA East Section

Mahnomen County



Native Plant Communities*

- Northern Mixed Cattail Marsh
- Mesic Brush-Prairie (Northern)
- Mesic Prairie (Northern)

* Source: Minnesota Biological Survey

Rush WMA East Section

Mahnomen County

Landcover





Rush WMA East Section

Directions and Notes from Minnesota DNR

Directions

From Mahanomen, go 4 1/2 miles E on SH 200 then 2 miles N on CSAH 2 then 1/2 mile W on CO RD 33.

Notes from MinnesotaSeasons.com

Parking

There is a parking lot on the east side of 170th Ave.
N47 22.458, W95 54.698

There is a parking lot on the north side of County Road 133 (200th St.).

N47 21.242, W95 52.839

DISCLAIMER OF WARRANTIES AND LIMITATIONS OF LIABILITY

MinnesotaSeasons.com, The Nature Conservancy, U.S. Department of Agriculture, Forest Service, U.S. Fish and Wildlife Service, the state of Minnesota, the Minnesota Department of Natural Resources, and their employees, make no representations or warranties, express or implied, with respect to the use of or reliance on the data provided herewith, regardless of its format or means of transmission. There are no guarantees or representations to the user as to the accuracy, currency, completeness, suitability or reliability of this data for any purpose. THE USER ACCEPTS THE DATA AND/OR SOFTWARE "AS IS" AND ASSUMES ALL RISKS ASSOCIATED WITH ITS USE.

IN NO EVENT SHALL MINNESOTASEASONS.COM, TNC, USDA-FS, USFWS, OR MNDNR BE LIABLE FOR ANY DIRECT, INDIRECT, INCIDENTAL, SPECIAL, EXEMPLARY, OR CONSEQUENTIAL DAMAGES (INCLUDING, BUT NOT LIMITED TO, PROCUREMENT OF SUBSTITUTE GOODS OR SERVICES; LOSS OF USE, DATA, OR PROFITS; OR BUSINESS INTERRUPTION) HOWEVER CAUSED AND ON ANY THEORY OF LIABILITY, WHETHER IN CONTRACT, STRICT LIABILITY, OR TORT (INCLUDING NEGLIGENCE OR OTHERS) ARISING IN ANY WAY OUT OF THE USE OF THIS DATA, EVEN IF ADVISED OF THE POSSIBILITY OF SUCH DAMAGE OR FOR ANY CLAIM BY ANY OTHER PARTY.

Your use of the data is acceptance on your part of the terms and conditions set forth herein.