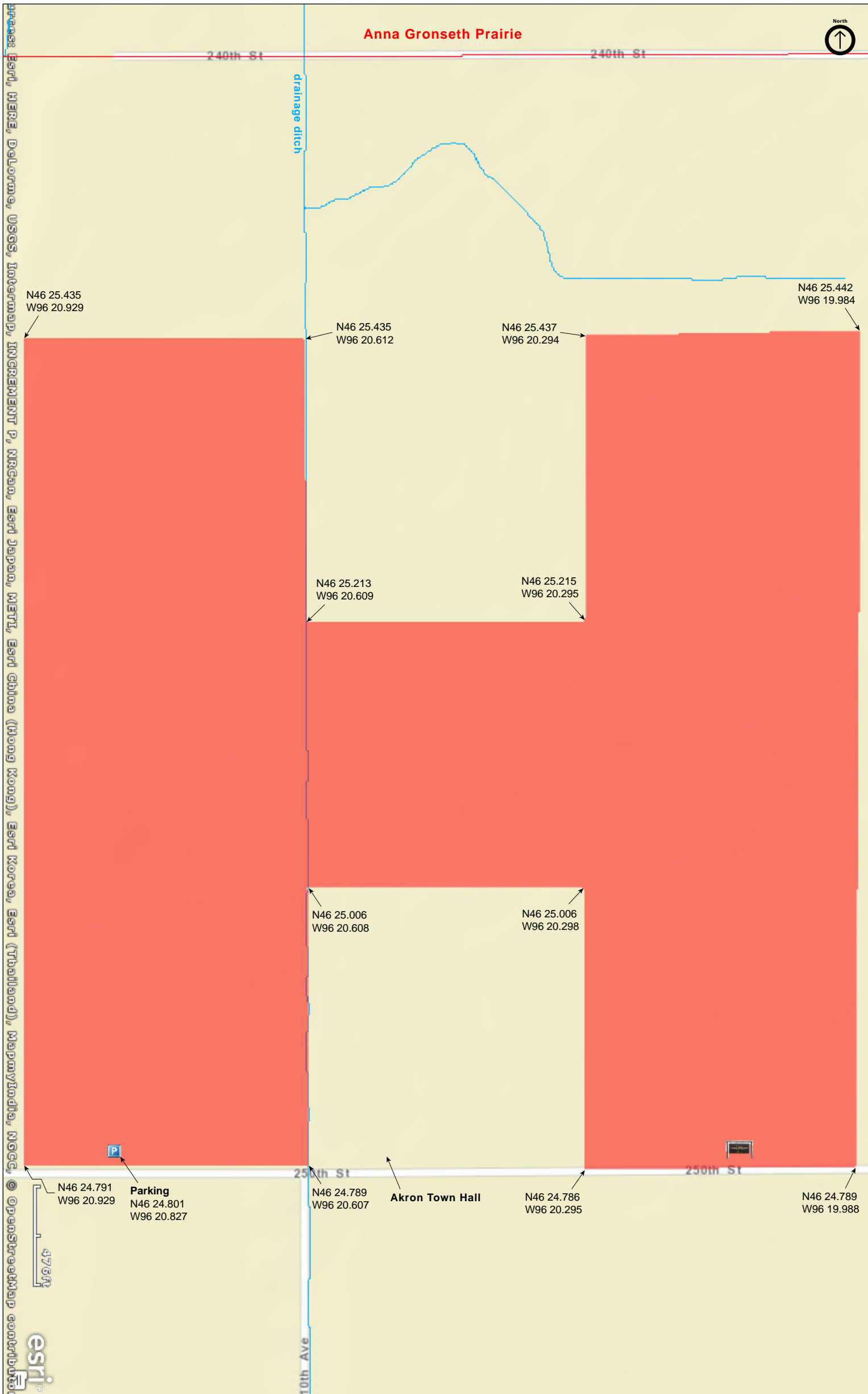
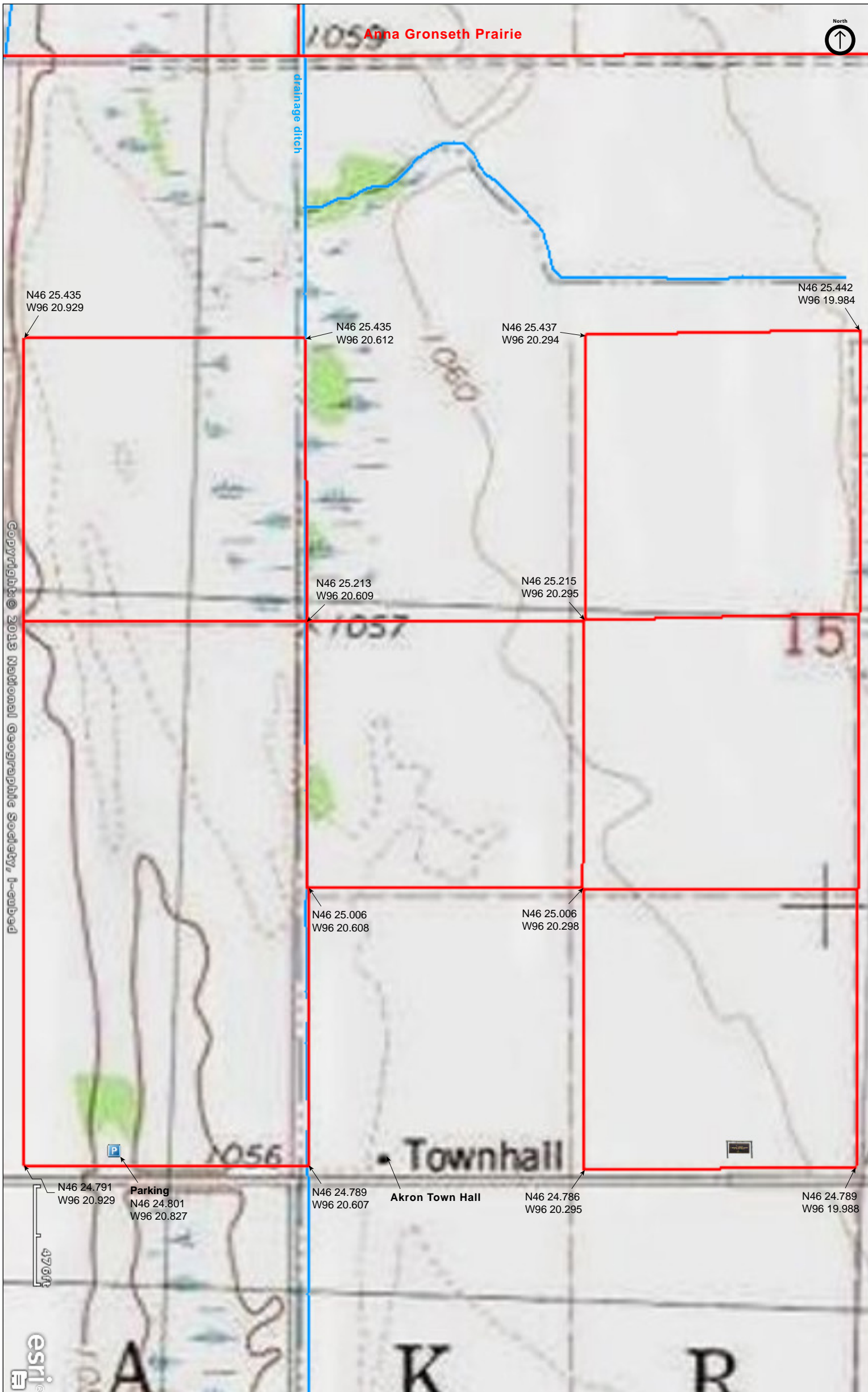


# Town Hall Prairie

Wilkin County



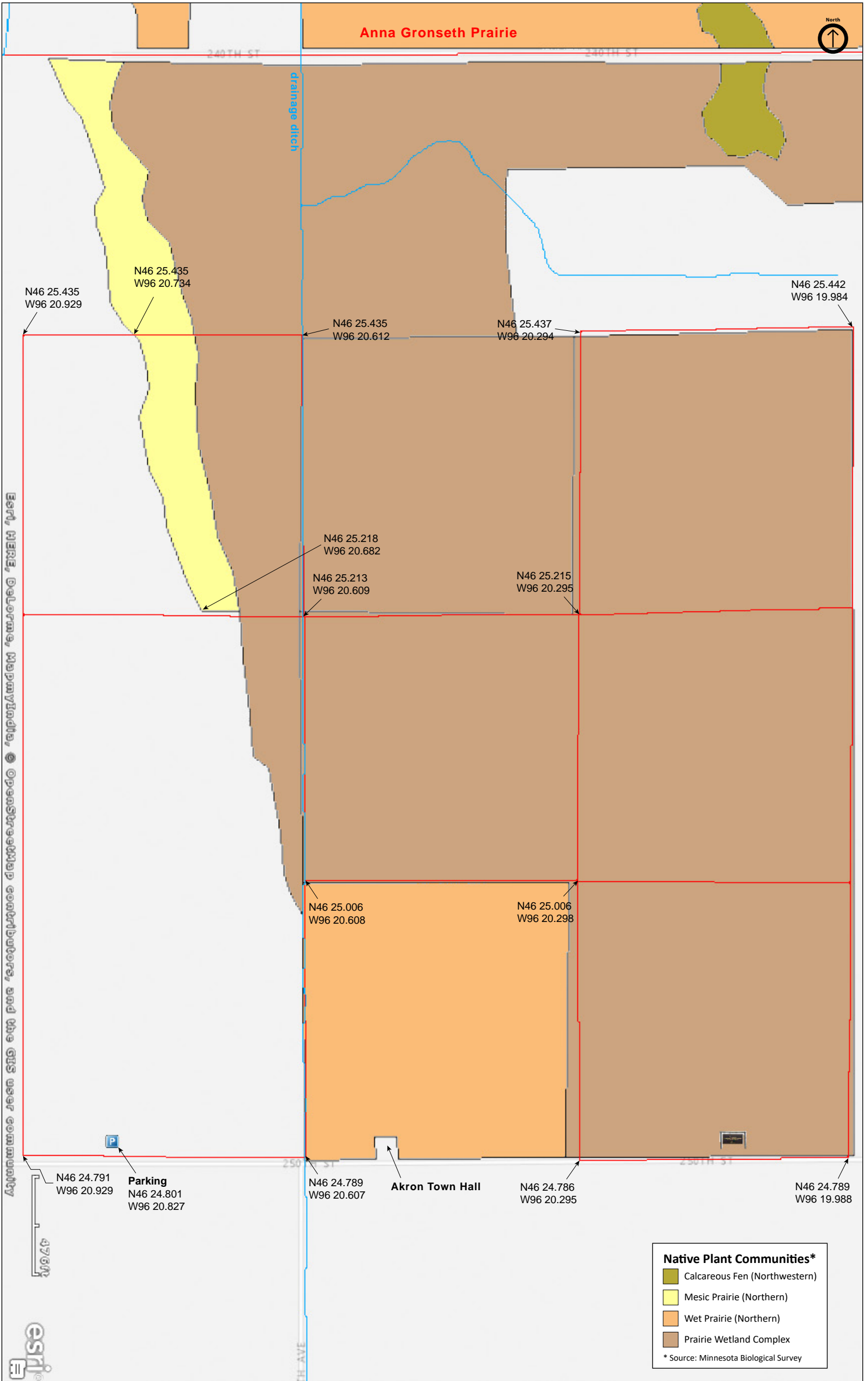


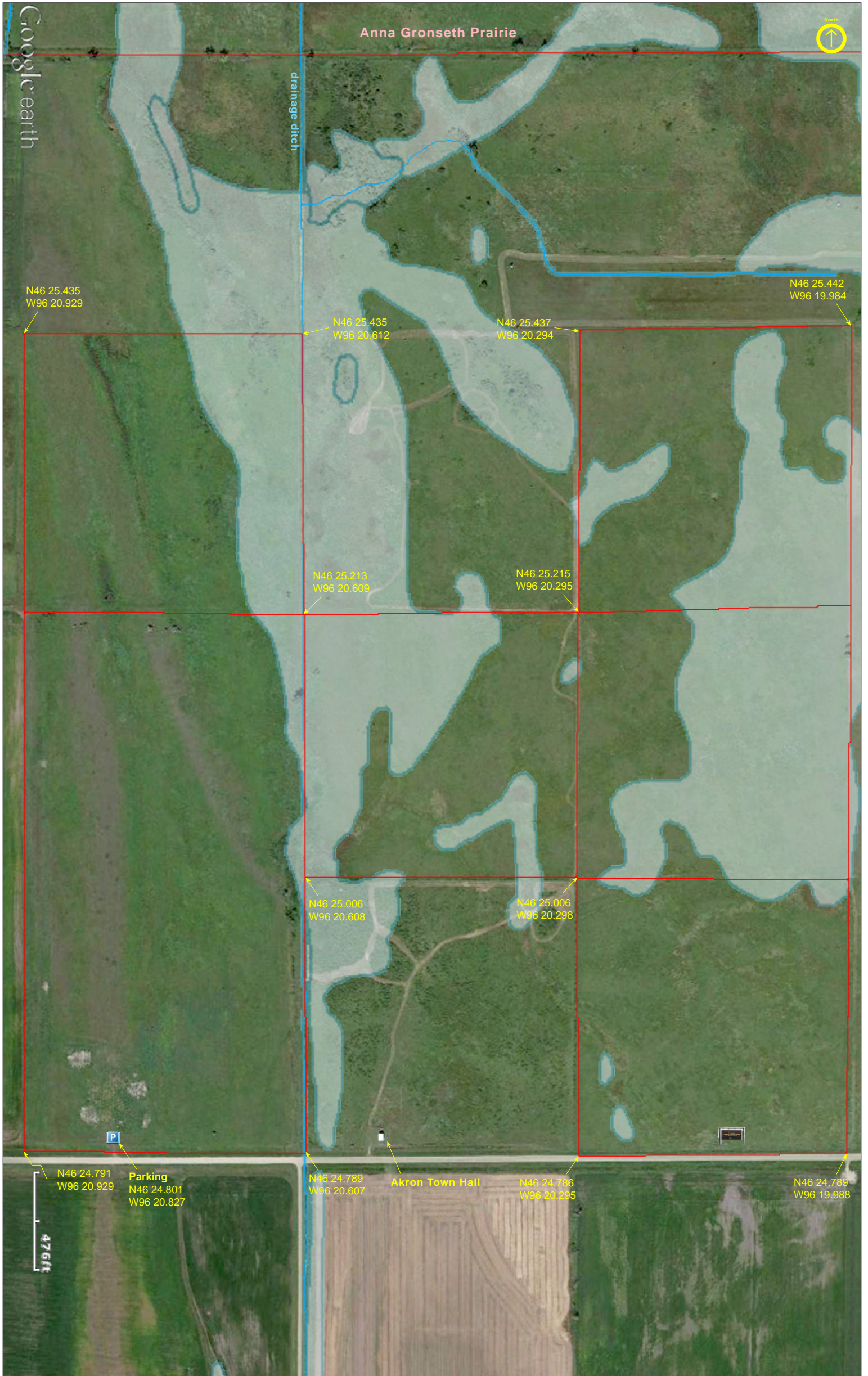
Copyright © 2013 National Geographic Society, Inc.



# Town Hall Prairie

Wilkin County





# Town Hall Prairie

## **Directions and Notes from The Nature Conservancy**

From Rothsay, drive west on County Road 26 for about two miles until it intersects with County Road 19. Turn south and travel four miles to the intersection with County Road 20. Turn west and drive one-half a mile until you see The Nature Conservancy signs on the right side of the road. Park along the roadside here.

One invasive plant at Town Hall Prairie is exotic Canada thistle. The Conservancy burns the prairie — called a controlled burn — to control this invasive plant.

## **Notes from MinnesotaSeasons.com**

### **Parking**

N46 24.801, W96 20.827

Drive over a ditch crossing near the southwest corner of the preserve and park by the former homestead.

## **DISCLAIMER OF WARRANTIES AND LIMITATIONS OF LIABILITY**

MinnesotaSeasons.com, The Nature Conservancy, U.S. Department of Agriculture, Forest Service, U.S. Fish and Wildlife Service, the state of Minnesota, the Minnesota Department of Natural Resources, and their employees, make no representations or warranties, express or implied, with respect to the use of or reliance on the data provided herewith, regardless of its format or means of transmission. There are no guarantees or representations to the user as to the accuracy, currency, completeness, suitability or reliability of this data for any purpose. THE USER ACCEPTS THE DATA AND/OR SOFTWARE "AS IS" AND ASSUMES ALL RISKS ASSOCIATED WITH ITS USE.

IN NO EVENT SHALL MINNESOTASEASONS.COM, TNC, USDA-FS, USFWS, OR MNDNR BE LIABLE FOR ANY DIRECT, INDIRECT, INCIDENTAL, SPECIAL, EXEMPLARY, OR CONSEQUENTIAL DAMAGES (INCLUDING, BUT NOT LIMITED TO, PROCUREMENT OF SUBSTITUTE GOODS OR SERVICES; LOSS OF USE, DATA, OR PROFITS; OR BUSINESS INTERRUPTION) HOWEVER CAUSED AND ON ANY THEORY OF LIABILITY, WHETHER IN CONTRACT, STRICT LIABILITY, OR TORT (INCLUDING NEGLIGENCE OR OTHERS) ARISING IN ANY WAY OUT OF THE USE OF THIS DATA, EVEN IF ADVISED OF THE POSSIBILITY OF SUCH DAMAGE OR FOR ANY CLAIM BY ANY OTHER PARTY.

Your use of the data is acceptance on your part of the terms and conditions set forth herein.