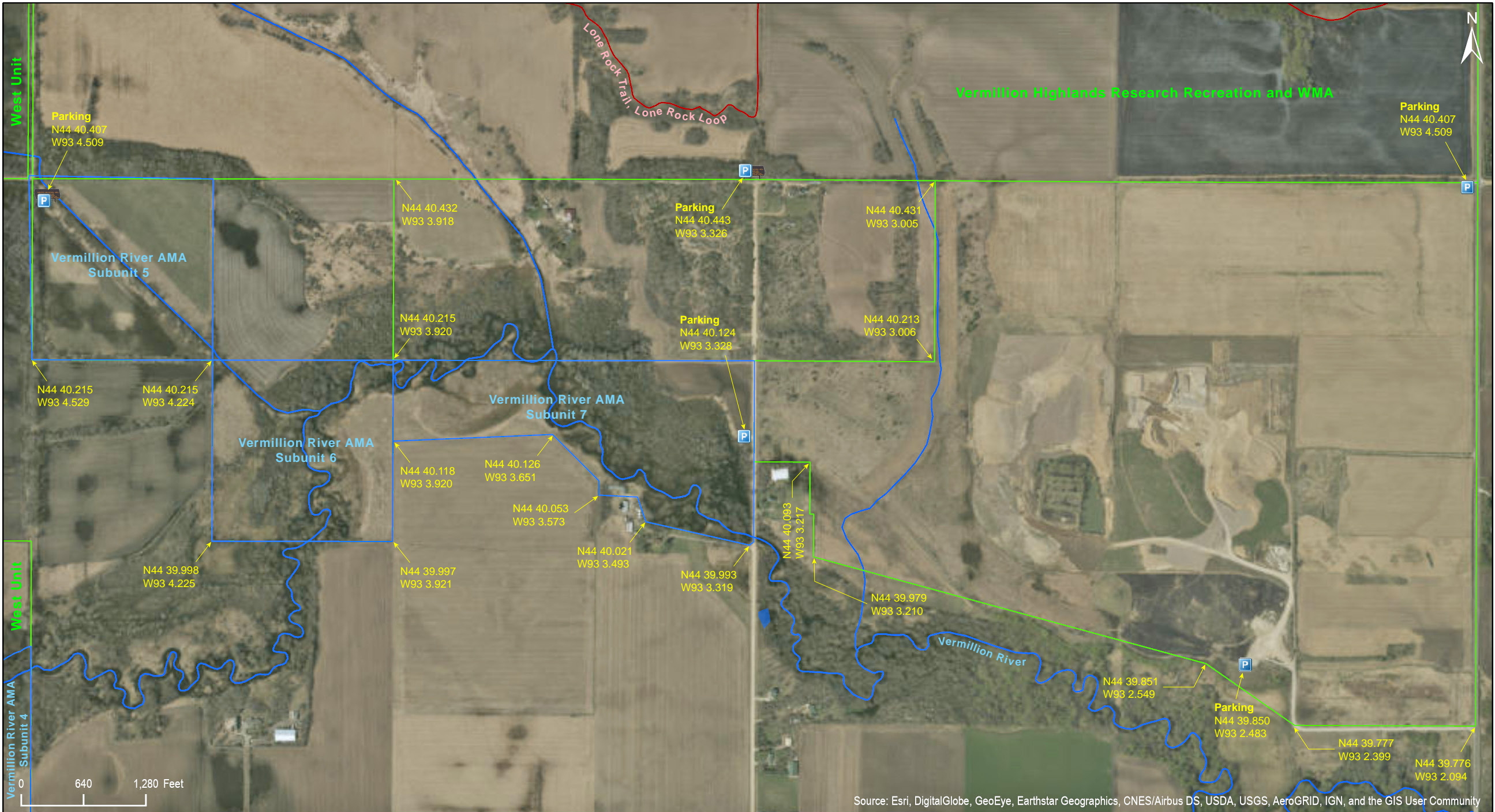


Vermillion River WMA East Unit

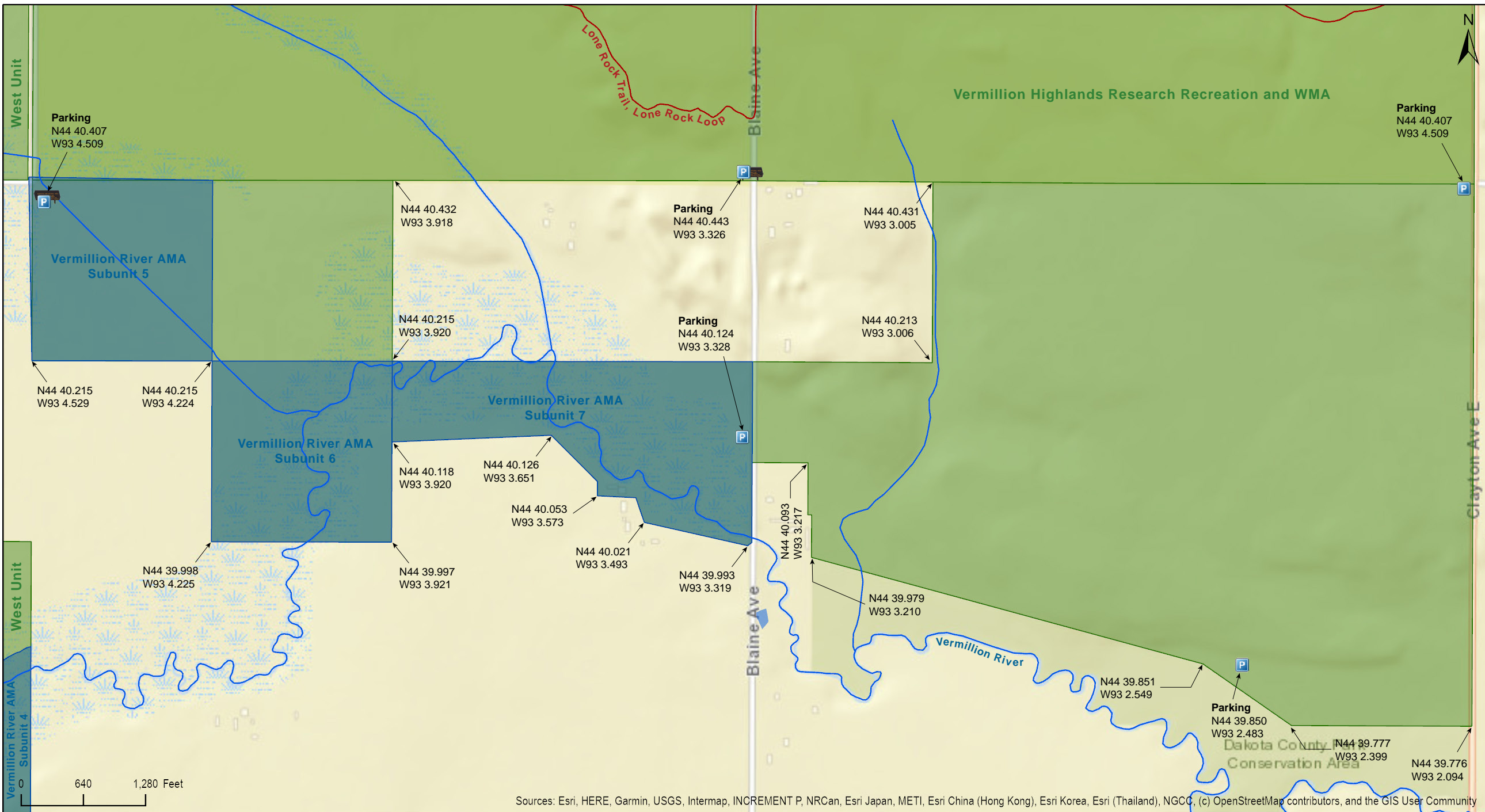
Dakota County



Source: Esri, DigitalGlobe, GeoEye, Earthstar Geographics, CNES/Airbus DS, USDA, USGS, AeroGRID, IGN, and the GIS User Community

Vermillion River WMA East Unit

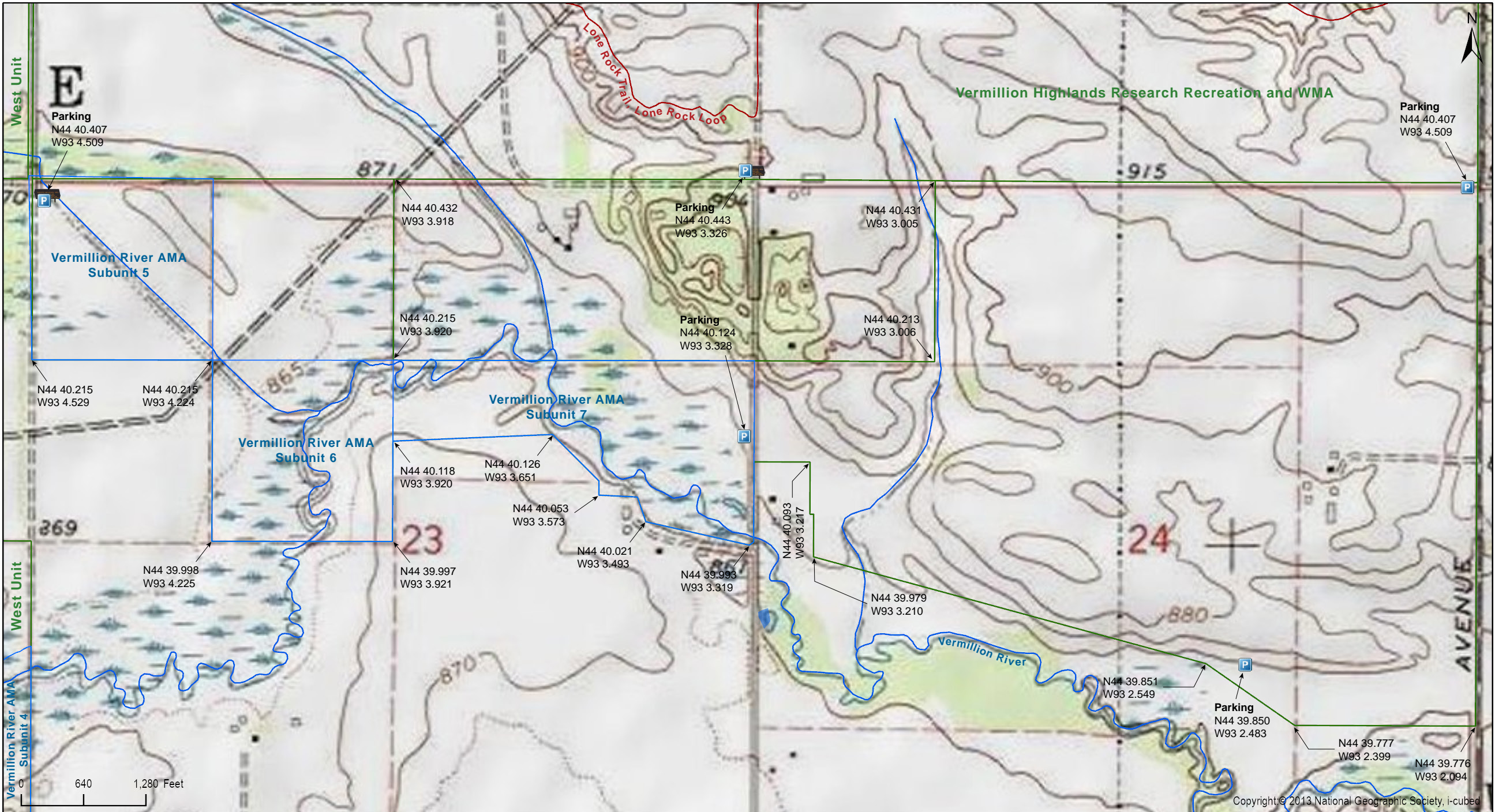
Dakota County



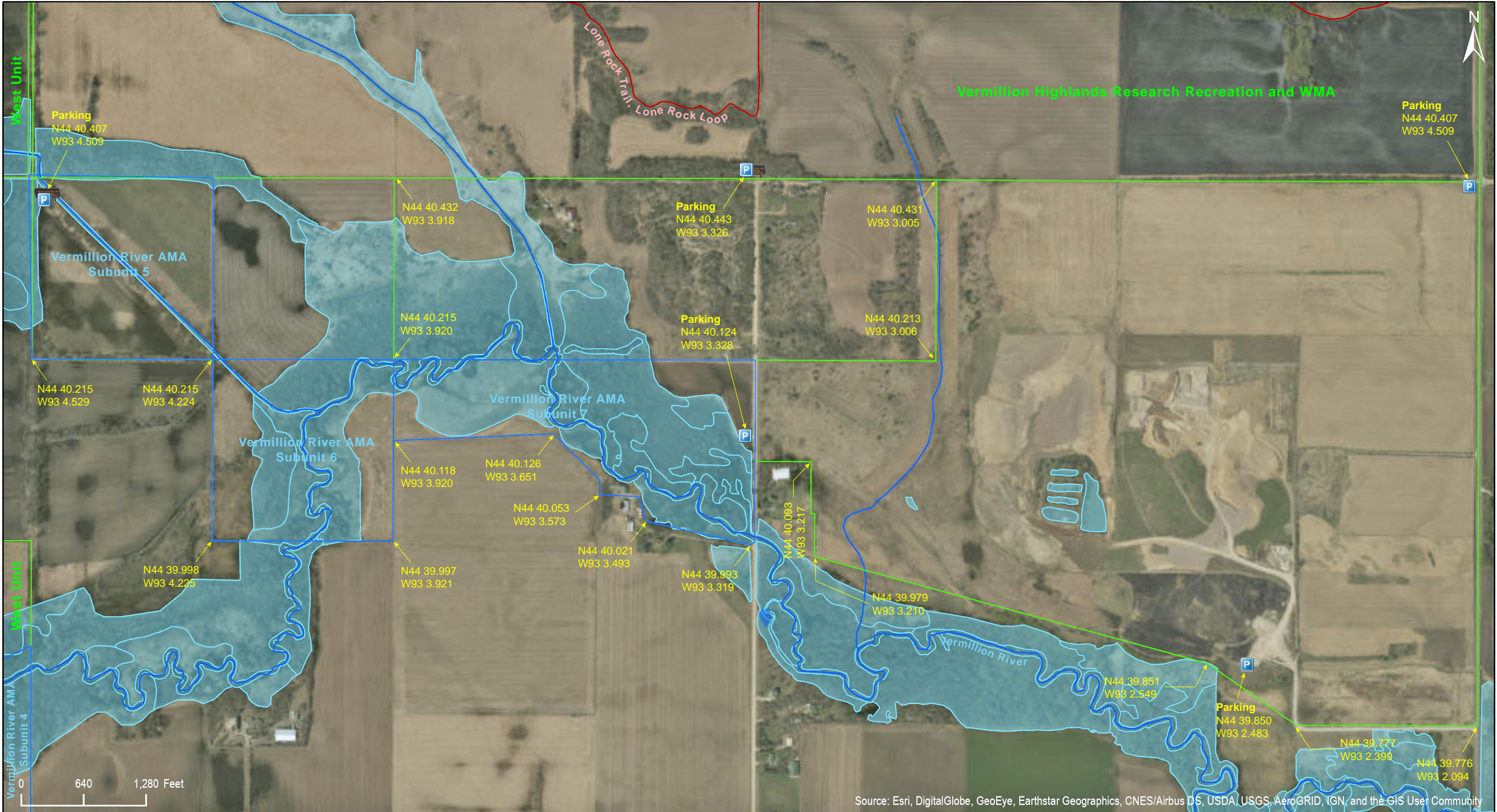
Sources: Esri, HERE, Garmin, USGS, Intermap, INCREMENT P, NRCan, Esri Japan, METI, Esri China (Hong Kong), Esri Korea, Esri (Thailand), NGCC, (c) OpenStreetMap contributors, and the GIS User Community

Vermillion River WMA East Unit

Dakota County



Vermillion River WMA East Unit



Source: Esri, DigitalGlobe, GeoEye, Earthstar Geographics, CNES/Airbus DS, USDA, USGS, AeroGRID, IGN, and the GIS User Community

Vermillion River WMA East Unit

Directions and Notes from Minnesota DNR

Directions

From Farmington, go 0.5 miles N on State Highway 3, then go 2.7 miles E on County Highway 66 to the parking area on the left (north) side of the road.

Notes from MinnesotaSeasons.com

Parking

Annette Ave.

There is a parking lot at 190th St. E. and Annette Ave. at the northwest corner of the unit. The East Unit is to the southeast of the intersection, the West Unit to the northwest, Vermillion Highlands Research Recreation and WMA to the northeast, and private property to the southwest.

N44 40.407, W93 4.509

Blaine Ave.

There is a parking lot on the west side of Blaine Ave. near the middle of the unit.

N44 40.124, W93 3.328

Clayton Ave.

There is a parking lot on the west side of Clayton Ave. at the northeast corner of the unit. Vermillion River WMA is to the south of the parking lot, Vermillion Highlands Research Recreation and WMA is to the north.

N44 40.423, W93 2.108

A gated, unnamed gravel road at the southeast corner of the unit on Clayton Ave. leads west 0.4 mile to a parking lot south of the gravel pit. According to the Minnesota DNR's map of the Vermillion River Complex, this lot can be used by visitors to the WMA.

N44 39.850, W93 2.483

DISCLAIMER OF WARRANTIES AND LIMITATIONS OF LIABILITY

MinnesotaSeasons.com, The Nature Conservancy, U.S. Department of Agriculture, Forest Service, U.S. Fish and Wildlife Service, the state of Minnesota, the Minnesota Department of Natural Resources, and their employees, make no representations or warranties, express or implied, with respect to the use of or reliance on the data provided herewith, regardless of its format or means of transmission. There are no guarantees or representations to the user as to the accuracy, currency, completeness, suitability or reliability of this data for any purpose. THE USER ACCEPTS THE DATA AND/OR SOFTWARE "AS IS" AND ASSUMES ALL RISKS ASSOCIATED WITH ITS USE.

IN NO EVENT SHALL MINNESOTASEASONS.COM, TNC, USDA-FS, USFWS, OR MNDNR BE LIABLE FOR ANY DIRECT, INDIRECT, INCIDENTAL, SPECIAL, EXEMPLARY, OR CONSEQUENTIAL DAMAGES (INCLUDING, BUT NOT LIMITED TO, PROCUREMENT OF SUBSTITUTE GOODS OR SERVICES; LOSS OF USE, DATA, OR PROFITS; OR BUSINESS INTERRUPTION) HOWEVER CAUSED AND ON ANY THEORY OF LIABILITY, WHETHER IN CONTRACT, STRICT LIABILITY, OR TORT (INCLUDING NEGLIGENCE OR OTHERS) ARISING IN ANY WAY OUT OF THE USE OF THIS DATA, EVEN IF ADVISED OF THE POSSIBILITY OF SUCH DAMAGE OR FOR ANY CLAIM BY ANY OTHER PARTY.

Your use of the data is acceptance on your part of the terms and conditions set forth herein.