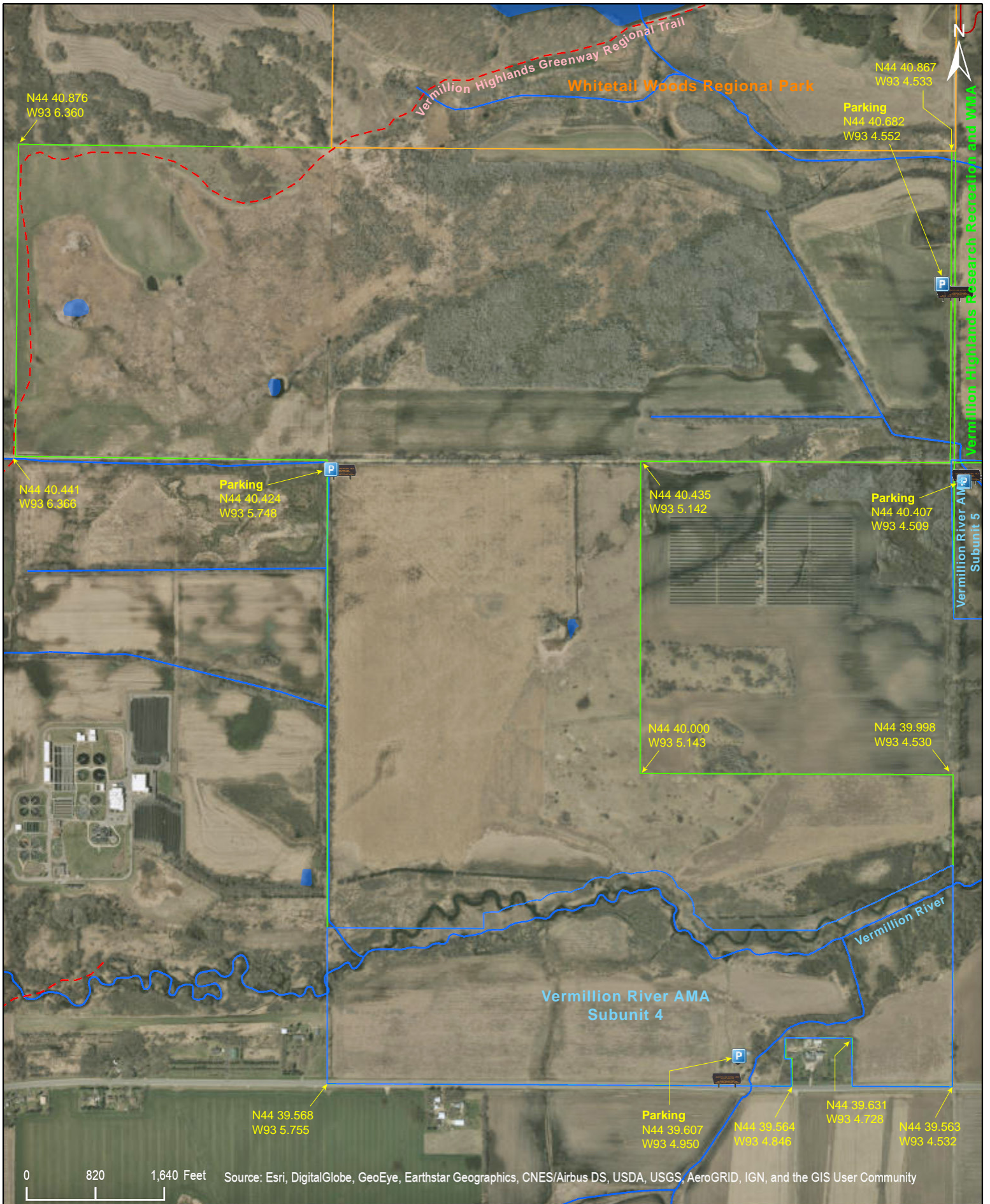


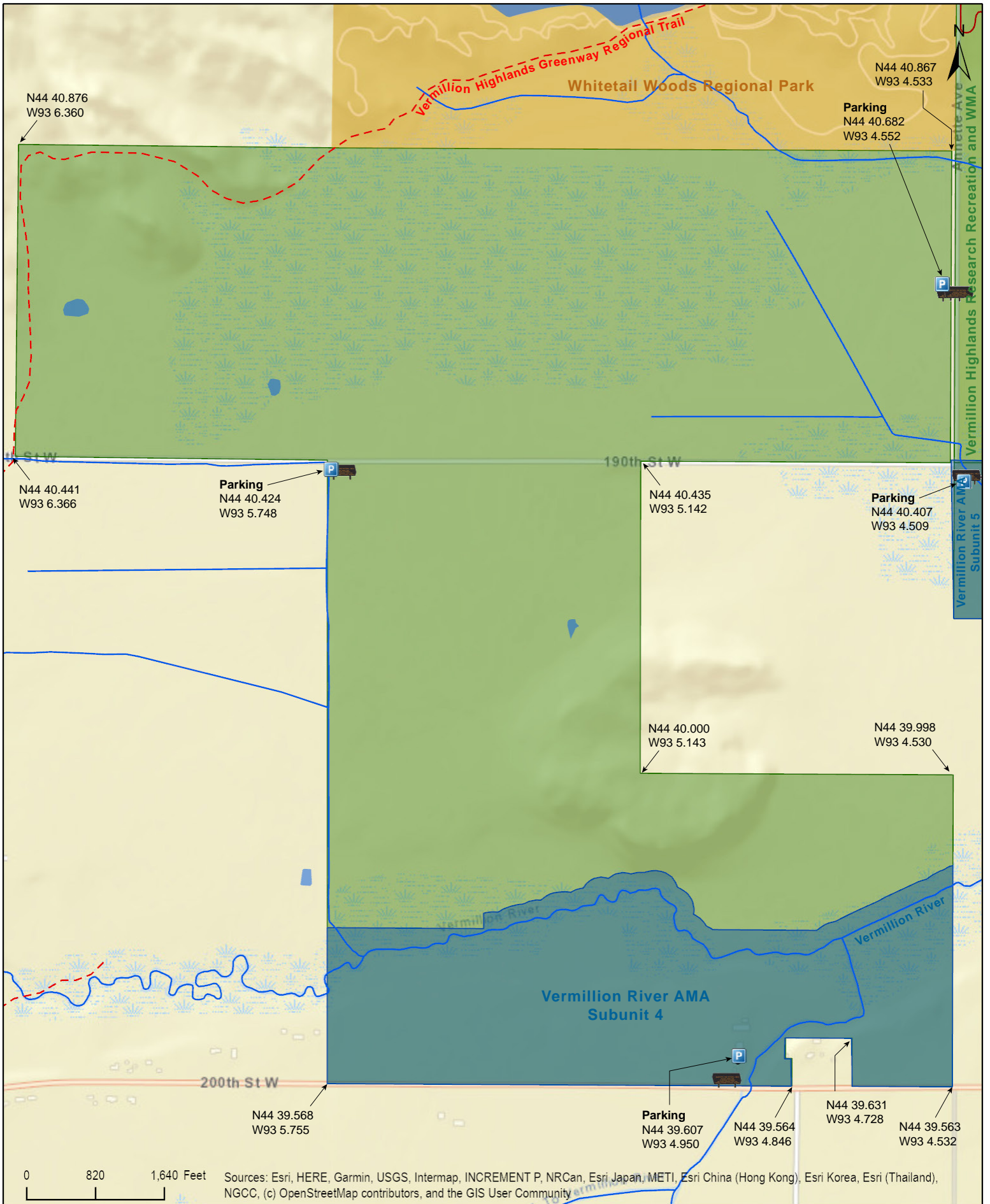
Vermillion River WMA West Unit

Dakota County



Vermillion River WMA West Unit

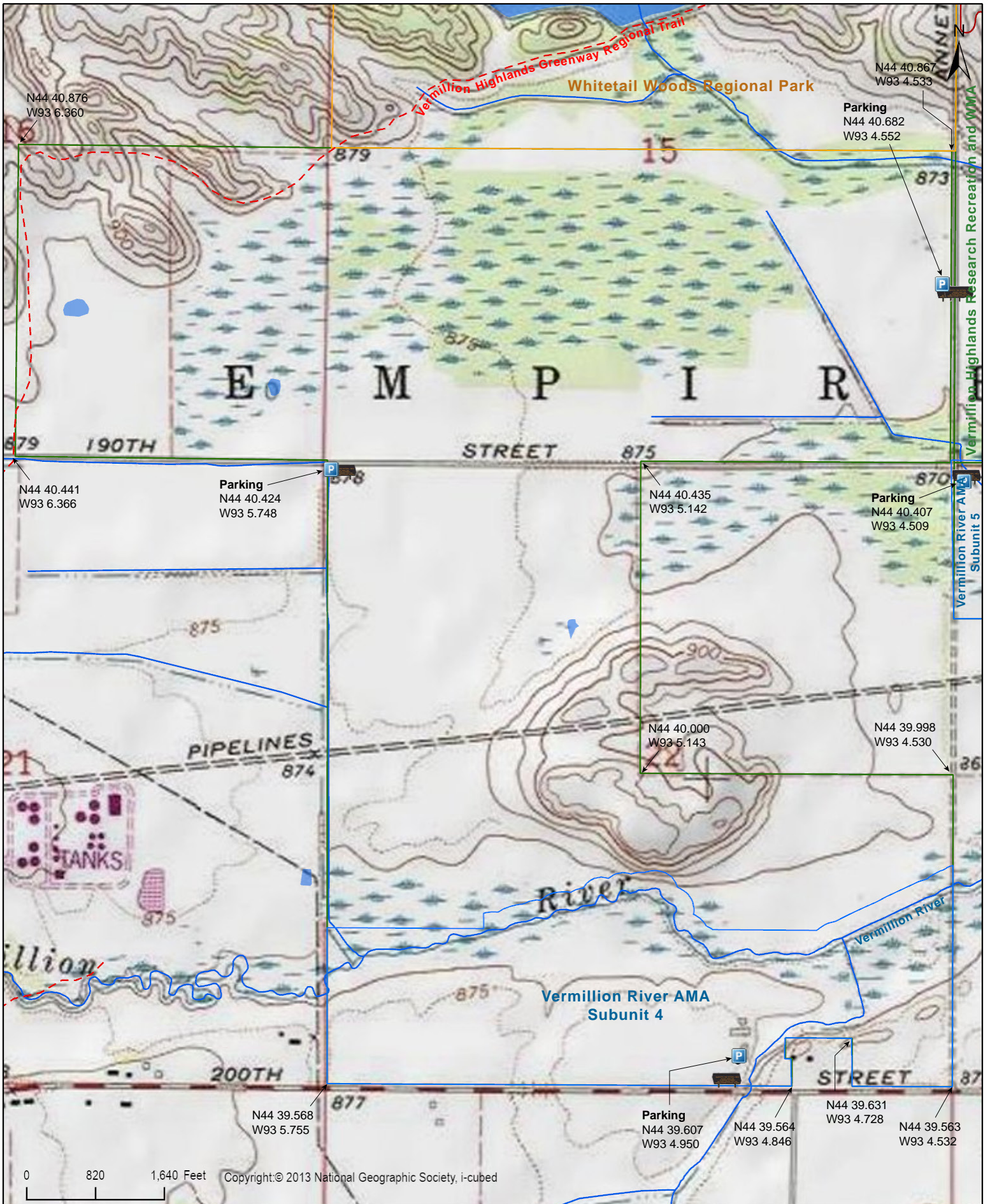
Dakota County



Sources: Esri, HERE, Garmin, USGS, Intermap, INCREMENT P, NRCan, Esri Japan, METI, Esri China (Hong Kong), Esri Korea, Esri (Thailand), NGCC, (c) OpenStreetMap contributors, and the GIS User Community

Vermillion River WMA West Unit

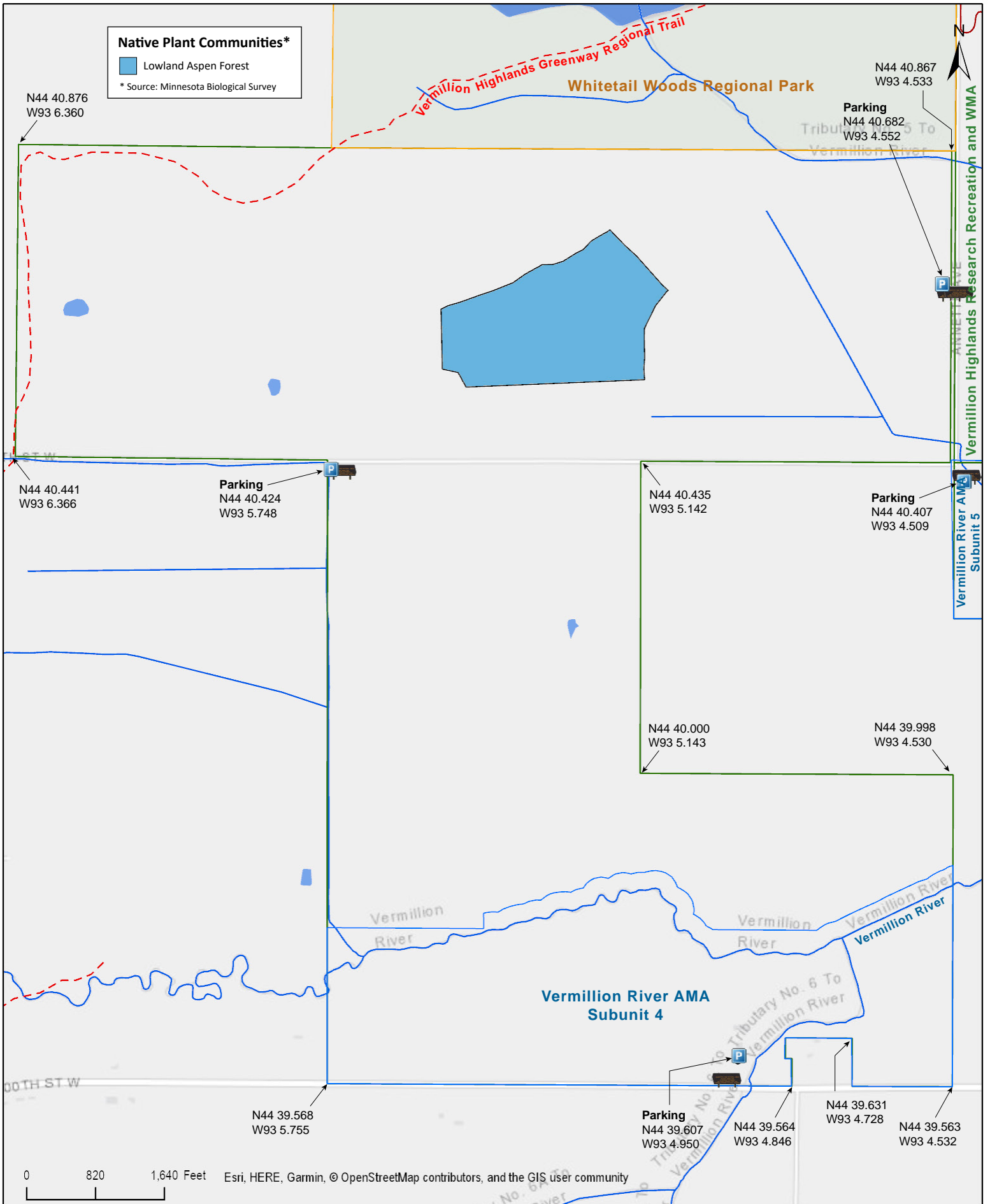
Dakota County



0 820 1,640 Feet Copyright:© 2013 National Geographic Society, i-cubed

Vermillion River WMA West Unit

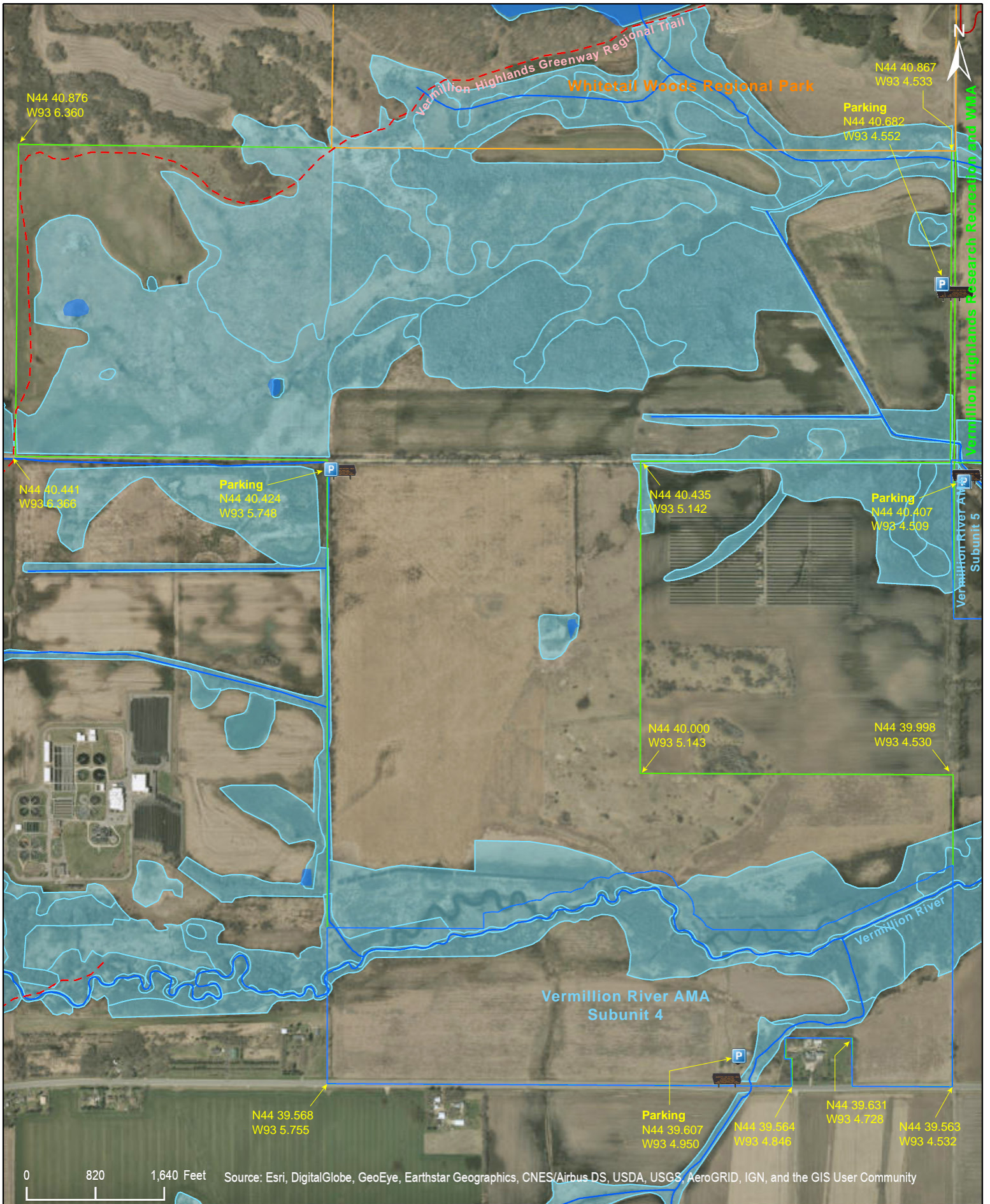
Dakota County



Vermillion River WMA West Unit

National Wetlands Inventory

Dakota County



Vermillion River WMA West Unit

Directions and Notes from Minnesota DNR

Directions

From Farmington, go 0.5 miles N on State Highway 3, then go 2.7 miles E on County Highway 66 to the parking area on the left (north) side of the road.

Notes from MinnesotaSeasons.com

Parking

County Highway 66

There is a large parking lot with a gravel surface on the north side of County Highway 66 at the south boundary of the WMA. Parking here gives access to the approximately 170 acres of the West Unit of the WMA that lies south of the Vermillion River.
N44 39.607, W93 4.950

190th St. W.

There is a parking lot on the south side of 190th St. W. Parking here gives access to the approximately 770 acres of the West Unit of the WMA that lies north of the Vermillion River.
N44 40.424, W93 5.748

Annette Ave.

There is a parking lot on the west side of Annette Ave. at the east boundary of the WMA. The West Unit is to the west of Annette Ave, Vermillion Highlands Research Recreation and WMA is to the east.
N44 40.682, W93 4.552

There is another parking lot on Annette Ave. at 190th St. E. The East Unit is to the southeast of the intersection, the West Unit to the northwest, Vermillion Highlands Research Recreation and WMA to the northeast, and private property to the southwest.
N44 40.407, W93 4.509

DISCLAIMER OF WARRANTIES AND LIMITATIONS OF LIABILITY

MinnesotaSeasons.com, The Nature Conservancy, U.S. Department of Agriculture, Forest Service, U.S. Fish and Wildlife Service, the state of Minnesota, the Minnesota Department of Natural Resources, and their employees, make no representations or warranties, express or implied, with respect to the use of or reliance on the data provided herewith, regardless of its format or means of transmission. There are no guarantees or representations to the user as to the accuracy, currency, completeness, suitability or reliability of this data for any purpose. THE USER ACCEPTS THE DATA AND/OR SOFTWARE "AS IS" AND ASSUMES ALL RISKS ASSOCIATED WITH ITS USE.

IN NO EVENT SHALL MINNESOTASEASONS.COM, TNC, USDA-FS, USFWS, OR MNDNR BE LIABLE FOR ANY DIRECT, INDIRECT, INCIDENTAL, SPECIAL, EXEMPLARY, OR CONSEQUENTIAL DAMAGES (INCLUDING, BUT NOT LIMITED TO, PROCUREMENT OF SUBSTITUTE GOODS OR SERVICES; LOSS OF USE, DATA, OR PROFITS; OR BUSINESS INTERRUPTION) HOWEVER CAUSED AND ON ANY THEORY OF LIABILITY, WHETHER IN CONTRACT, STRICT LIABILITY, OR TORT (INCLUDING NEGLIGENCE OR OTHERS) ARISING IN ANY WAY OUT OF THE USE OF THIS DATA, EVEN IF ADVISED OF THE POSSIBILITY OF SUCH DAMAGE OR FOR ANY CLAIM BY ANY OTHER PARTY.

Your use of the data is acceptance on your part of the terms and conditions set forth herein.