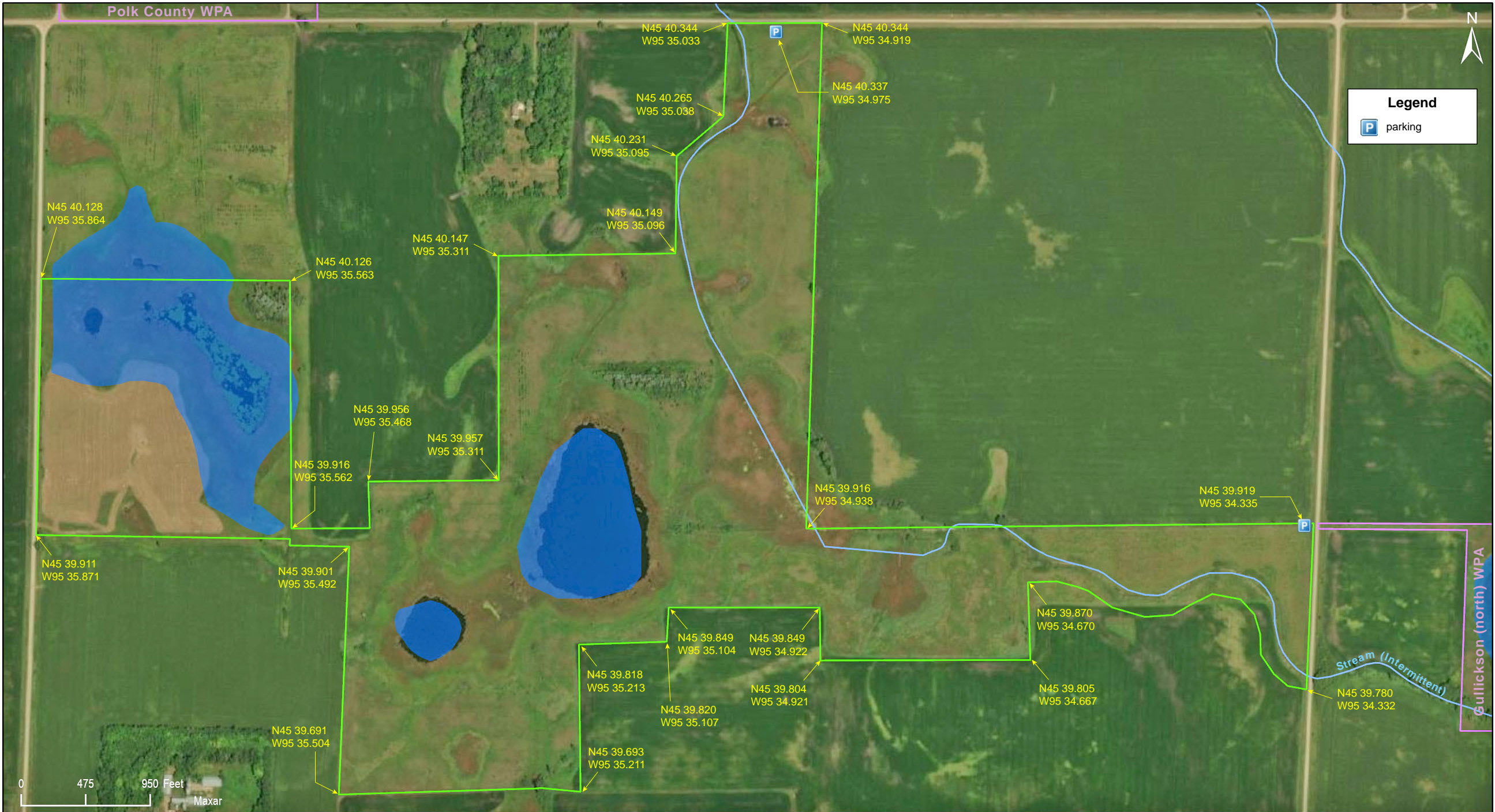


White Bear WMA

Pope County



White Bear WMA

Pope County

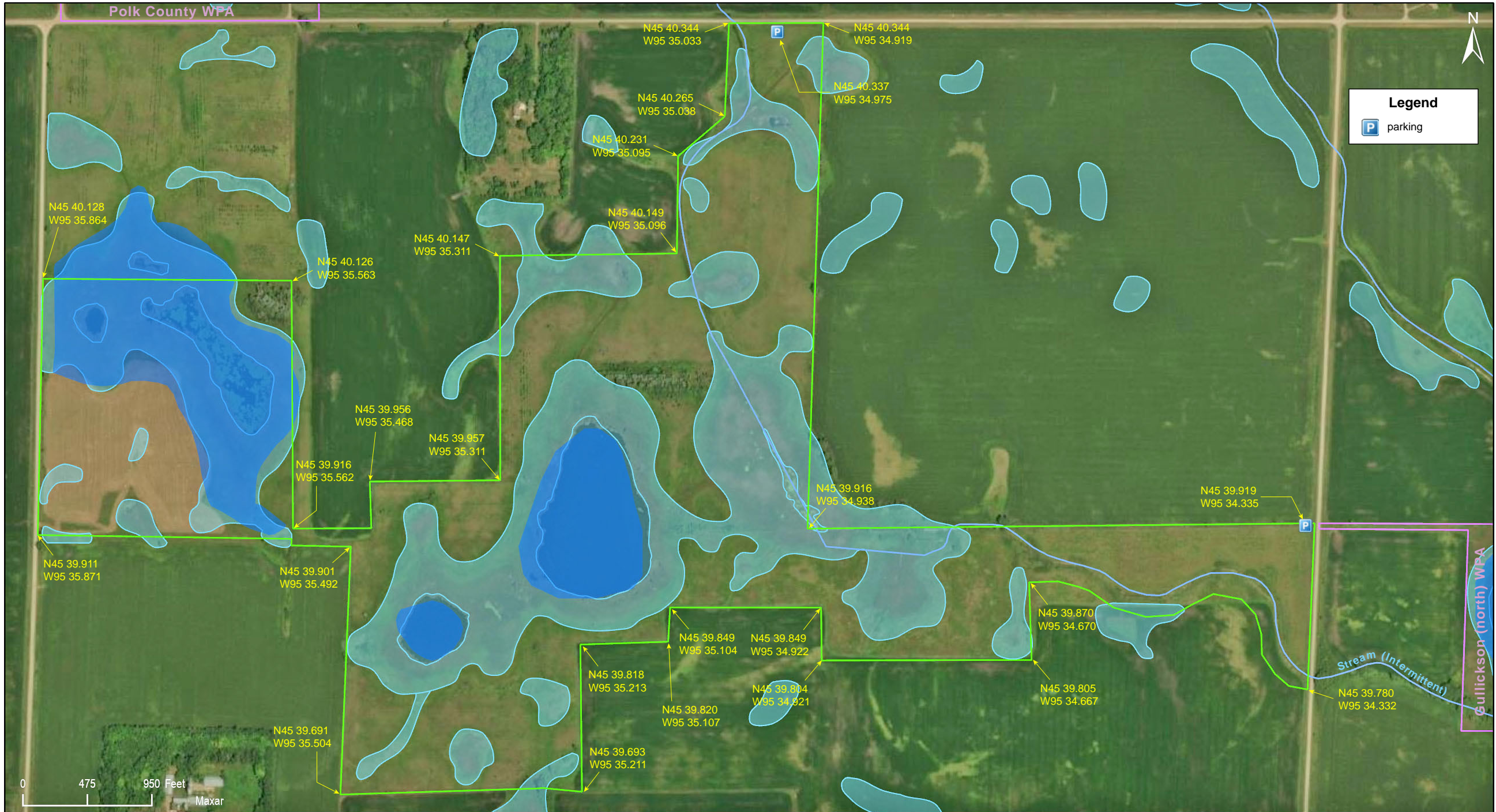


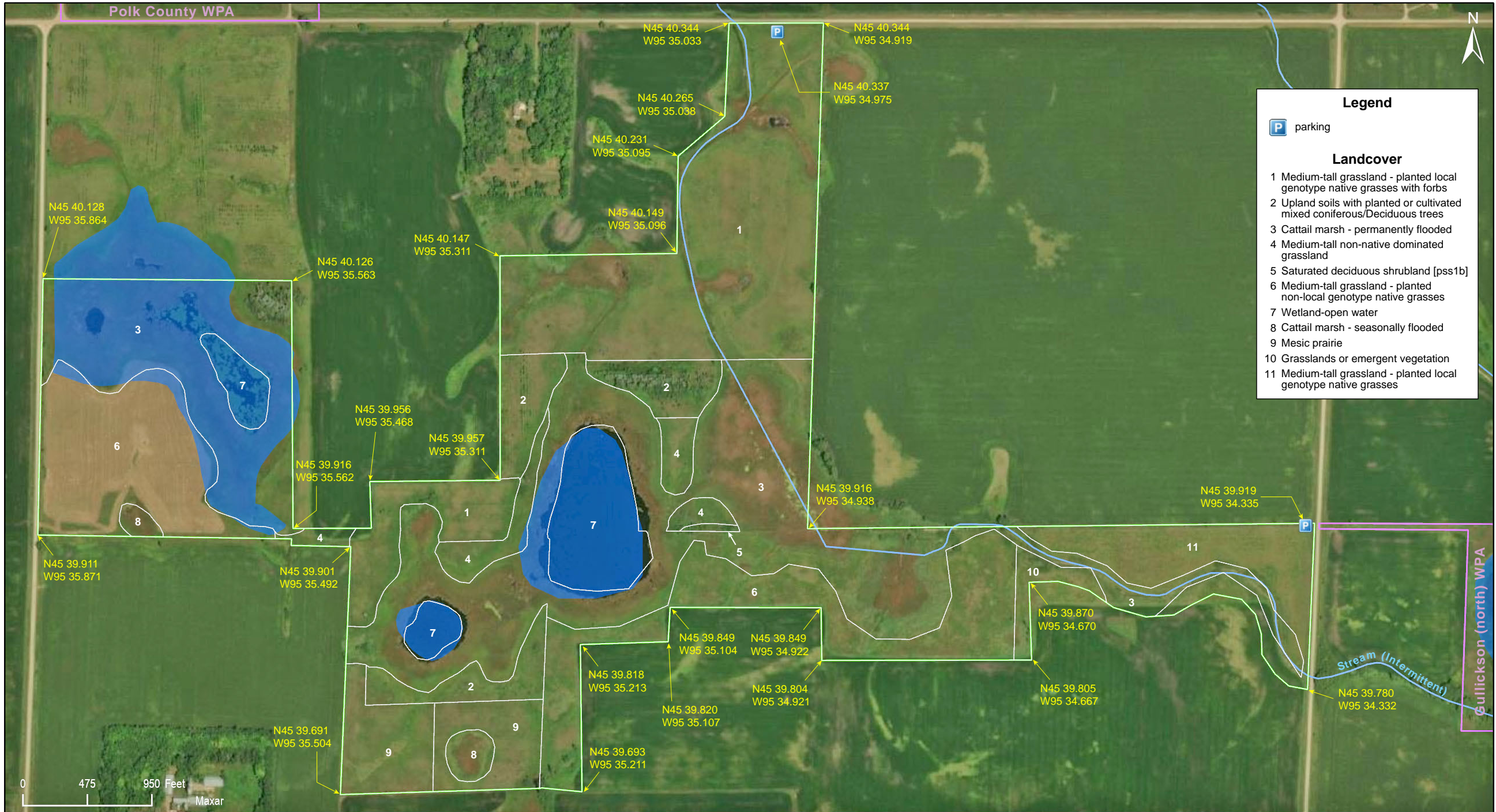
Esri, HERE, Garmin, GeoTechnologies, Inc., NGA, USGS

White Bear WMA

Pope County







Legend

P parking

Landcover

- 1 Medium-tall grassland - planted local genotype native grasses with forbs
- 2 Upland soils with planted or cultivated mixed coniferous/Deciduous trees
- 3 Cattail marsh - permanently flooded
- 4 Medium-tall non-native dominated grassland
- 5 Saturated deciduous shrubland [pss1b]
- 6 Medium-tall grassland - planted non-local genotype native grasses
- 7 Wetland-open water
- 8 Cattail marsh - seasonally flooded
- 9 Mesic prairie
- 10 Grasslands or emergent vegetation
- 11 Medium-tall grassland - planted local genotype native grasses



White Bear WMA

Directions and Notes from Minnesota DNR

Directions

From Starbuck, go 3 miles N on SH 114 then 3 miles W on CSAH 24 then 1/2 mile N on TWP RD.

Notes from MinnesotaSeasons.com

Parking

There is a parking lot on the west side of 310th Ave. (Township Road T-115) at the east boundary of the WMA.

N45 39.919, W95 34.335

There is also a parking lot on the south side of 160th St. (Township Road T-96) at the north boundary of the WMA.

N45 40.337, W95 34.975

DISCLAIMER OF WARRANTIES AND LIMITATIONS OF LIABILITY

MinnesotaSeasons.com, The Nature Conservancy, U.S. Department of Agriculture, Forest Service, U.S. Fish and Wildlife Service, the state of Minnesota, the Minnesota Department of Natural Resources, and their employees, make no representations or warranties, express or implied, with respect to the use of or reliance on the data provided herewith, regardless of its format or means of transmission. There are no guarantees or representations to the user as to the accuracy, currency, completeness, suitability or reliability of this data for any purpose. THE USER ACCEPTS THE DATA AND/OR SOFTWARE "AS IS" AND ASSUMES ALL RISKS ASSOCIATED WITH ITS USE.

IN NO EVENT SHALL MINNESOTASEASONS.COM, TNC, USDA-FS, USFWS, OR MNDNR BE LIABLE FOR ANY DIRECT, INDIRECT, INCIDENTAL, SPECIAL, EXEMPLARY, OR CONSEQUENTIAL DAMAGES (INCLUDING, BUT NOT LIMITED TO, PROCUREMENT OF SUBSTITUTE GOODS OR SERVICES; LOSS OF USE, DATA, OR PROFITS; OR BUSINESS INTERRUPTION) HOWEVER CAUSED AND ON ANY THEORY OF LIABILITY, WHETHER IN CONTRACT, STRICT LIABILITY, OR TORT (INCLUDING NEGLIGENCE OR OTHERS) ARISING IN ANY WAY OUT OF THE USE OF THIS DATA, EVEN IF ADVISED OF THE POSSIBILITY OF SUCH DAMAGE OR FOR ANY CLAIM BY ANY OTHER PARTY.

Your use of the data is acceptance on your part of the terms and conditions set forth herein.